



FUSION

MODULAR LED SYSTEM

TYPE:

PROJECT NAME:



	70° <i>(30° on request)</i>
TC	3000K / 4000K
IP	40
CRI	>80
EEL	A++
RG	0
08	Satin white
	

FUSION

CEILING SYSTEM

A line of light emphasized by the volume of the luminaire. Fusion is a modular single emission ceiling lamp made from epoxy polyester powder coated aluminium and it is equipped with a frosted light diffuser, high efficiency LED modules and driver. The lamp is suspended with galvanized steel cables (not included) with quick-adjust regulation devices. A wide range of accessories is available to customize the system. This product includes wiring with four wires that pass through two electrical circuits with shared neutral. 30° lens reducing the luminaire's direct lighting (UGR<19, standards UNI-11165 and EN 12464-1), SA emergency version (1 hour of autonomy) and switch-dim/DALI dimmable version available on request. Its degree of protection against the penetration of dust, solid objects and liquids is IP40.

SPECIFICATION SHEET

 LEDOLGY®

A **Luminart** BRAND

WWW.LUMINARTLIGHTING.COM

FUSION

MODULAR LED SYSTEM

TYPE:

PROJECT NAME:

FUSION PRO

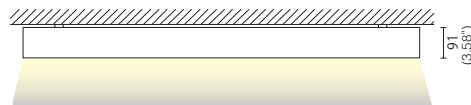
CODE	W	Lm (3000K)
L25A6-617.084...	30	3960
L25A6-617.112...	40	5280
L25A6-617.140...	50	6600
L25A6-617.168...	60	7920
L25A6-617.196...	70	9240
L25A6-617.224...	80	10560
L25A6-617.252...	90	11880
L25A6-617.280...	100	13200
L25LE001-30/100	30° lens	

/DIMM2 DALI dimmer
/DIMM3 DIM-switch dimmer

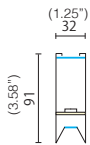
FUSION PRO LIGHT

CODE	W	Lm (3000K)
L25A6-616.084...	27	3300
L25A6-616.112...	35	4400
L25A6-616.140...	44	5500
L25A6-616.168...	53	6600
L25A6-616.196...	62	7700
L25A6-616.224...	71	8800
L25A6-616.252...	80	9900
L25A6-616.280...	88	11000
L25LE001-30/100	30° lens	

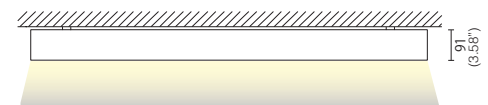
/DIMM2 DALI dimmer
/DIMM3 DIM-switch dimmer



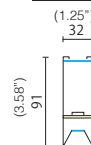
mm	code
(33.26") 845*	L25A6-617.084
(44.29") 1125*	L25A6-617.112
(55.3") 1405*	L25A6-617.140
(66.33") 1685*	L25A6-617.168
(77.36") 1965*	L25A6-617.196
(88.38") 2245*	L25A6-617.224
(99.4") 2525*	L25A6-617.252
(110.4") 2805*	L25A6-617.280



*NOTICE: add 1,8 mm thickness for the end caps to the beginning and the end of the system.
Product code/T=1 end cap
Product code/TT=2 end caps

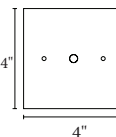


mm	code
(33.26") 845*	L25A6-616.084
(44.29") 1125*	L25A6-616.112
(55.3") 1405*	L25A6-616.140
(66.33") 1685*	L25A6-616.168
(77.36") 1965*	L25A6-616.196
(88.38") 2245*	L25A6-616.224
(99.4") 2525*	L25A6-616.252
(110.4") 2805*	L25A6-616.280



*NOTICE: add 1,8mm thickness for the end caps to the beginning and the end of the system.
Product code/T=1 end cap
Product code/TT=2 end caps

INSTALLATION NOTE:
Comes with 4" SQUARE backplate to cover the junction box



SPECIFICATION SHEET

FUSION

MODULAR LED SYSTEM

TYPE:

PROJECT NAME:

CODE DESCRIPTION

HANGING SYSTEM ACCESSORIES

L25A6-019.3	Ceiling cup with supply cable 3x0.75mm ² 200cm (78.74")
L25A6-019.4	Ceiling cup with supply cable 4x0.75mm ² 200cm (78.74") for double switch use
L25A6-019.5	Ceiling cup with supply cable 5x0.75mm ² 200cm (78.74") for dimming and emergency use
L25A6-036	Suspension cables, 200cm (78.74")
L25A6-037	In-line connector
X	Extension + 32mm for a 90° corner
Y	Extension + 32mm for a 90° corner
Z	Extension + 32mm for a 90° corner
K	Extension + 32mm for a 90° corner
W	Extension + 32mm for a 90° corner
T	End cap (single)
TT	End caps (pair)
L25LE001-30/100	30° lens (code per meter (39.37"))

CEILING SYSTEM ACCESSORIES

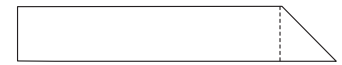
L25A6-037	In-line connector
X	Extension + 32mm for a 90° corner
Y	Extension + 32mm for a 90° corner
Z	Extension + 32mm for a 90° corner
K	Extension + 32mm for a 90° corner
W	Extension + 32mm for a 90° corner
T	End cap (single)
TT	End caps (pair)
L25LE001-30/100	30° lens (code per meter (39.37"))

RECESSED SYSTEM WITH TRIM ACCESSORIES

L25A6-037	In-line connector
L25A6-038	End caps (pair)
X	Extension + 37mm for a 90° corner
Y	Extension + 37mm for a 90° corner
Z	Extension + 37mm for a 90° corner
K	Extension + 37mm for a 90° corner
W	Extension + 37mm for a 90° corner
L25LE001-30/100	30° lens (code per meter (39.37"))

TRIMLESS RECESSED SYSTEM ACCESSORIES

L25A6-037	In-line connector
L25A6-038	End caps (pair)
L25A6-040	End caps for a flush box (pair)
X	Extension + 32mm for a 90° corner
Y	Extension + 32mm for a 90° corner
Z	Extension + 32mm for a 90° corner
K	Extension + 32mm for a 90° corner
W	Extension + 32mm for a 90° corner
L25LE001-30/100	30° lens (code per meter (39.37"))
L250800/DIM	Dimming kit
L250800/EM	Emergency kit with batteries



Cod. X



Cod. Y



Cod. Z

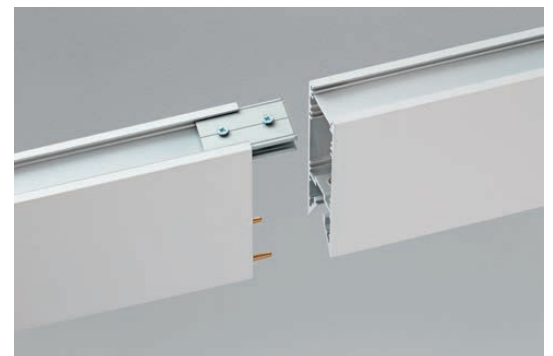


Cod. K



Cod. W

Customized corner on request



In-line connector

SPECIFICATION SHEET

