

# ESPO 1

WALL LED SYSTEM

**TYPE:**

**PROJECT NAME:**

Not only a source of light but also an elegant display shelf. Espo is a modular single emission wall luminaire. It is made from extruded epoxy polyester powder coated aluminium and it is equipped with a frosted polycarbonate screen and LED light sources. This fixture requires a remote driver (included) which, for maintenance purposes, must be placed in an inspection box at a distance of no more than 10 metres. Its degree of protection against the penetration of dust, solid objects and liquids is IP40.



SPECIFICATION SHEET

**LEDOLOGY®**

A **Luminart** BRAND

[WWW.LUMINARTLIGHTING.COM](http://WWW.LUMINARTLIGHTING.COM)

# ESPO 1

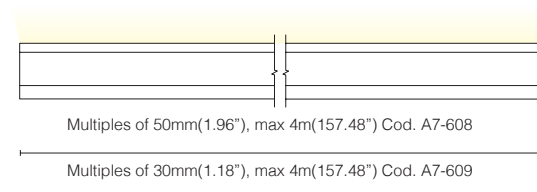
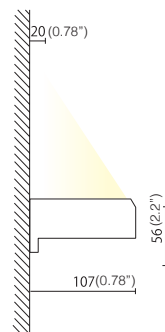
## WALL LED SYSTEM

**TYPE:**

**PROJECT NAME:**

CODE	W	Lm (3000K)
A7-608.100...*	12 (120 led)	1200
A7-609.100...*	25 (280 led)	2500
A7-002	End caps (pair)	
A7-000	In-line connector	
0800/DIM	Dimming kit	
0800/EM	Emergency kit with batteries	

\*code per meter (39.3701")



NOTICE: Add 10mm (0.39") to total length of composition



SPECIFICATION SHEET

**LEDOLOGY®**

A **Luminart** BRAND

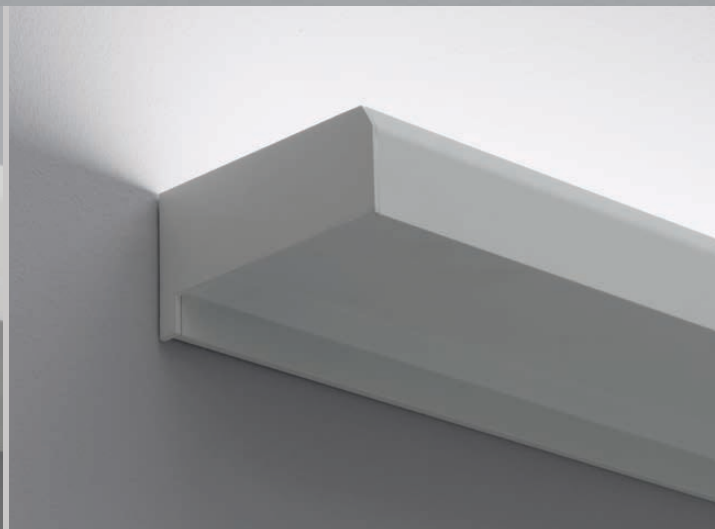
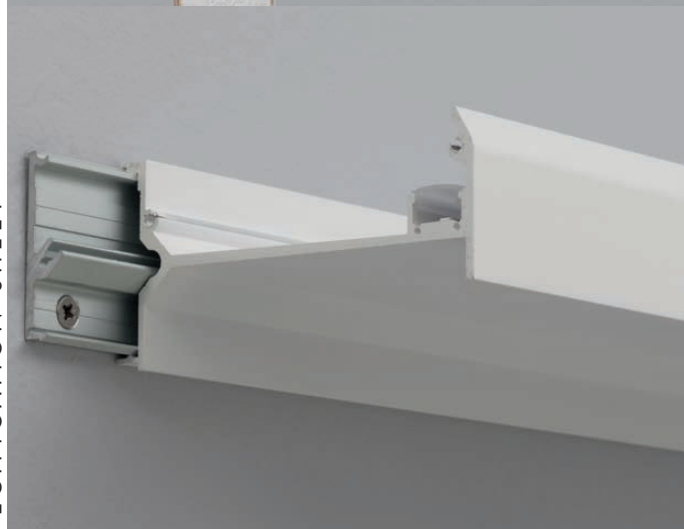
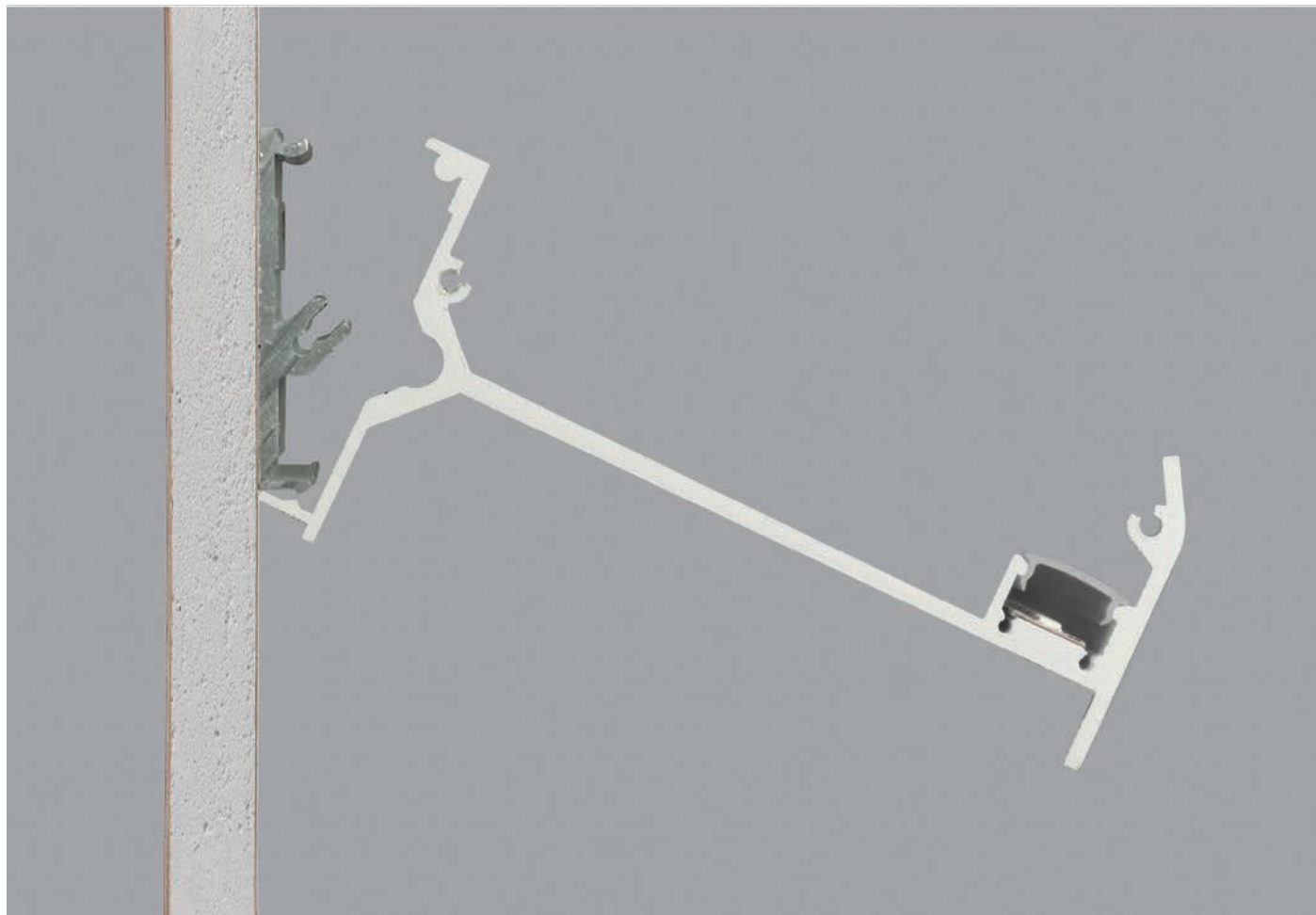
WWW.LUMINARTLIGHTING.COM

# ESPO 1

WALL LED SYSTEM

TYPE:

PROJECT NAME:



SPECIFICATION SHEET

**LEDOLOGY®**

A **Luminart** BRAND

[WWW.LUMINARTLIGHTING.COM](http://WWW.LUMINARTLIGHTING.COM)