

# BASILICA™

SUSPENSION

TYPE:

PROJECT NAME:



**BASILICA OG**



**BASILICA BALL**

A symmetrical light form with proportions redolent of classical formal architecture. A hanging lamp featuring two parallel wings evocative of the vaults of one of the Venetian architect's Andrea Palladio greatest works. Design and aesthetic research are knowingly combined with performance.



SPECIFICATION SHEET

# BASILICA™

## SUSPENSION

TYPE:

PROJECT NAME:

	Dimensions	Light source	
Basilica 125	125 x 60 x 30 cm weight 20 Kg	<b>lamp type</b> 2 linear modules 48 W <b>luminous efficacy</b> 8070 Lm <b>light color</b> 3000 K <b>uplight</b> 2690 Lm <b>downlight</b> 5380 Lm	Velvet: L82BASESO125O01 Wool: L82BASESO125E01 Eco: L82BASESO125Q01
Basilica Ball 125	125 x 60 x 30 cm weight 20 Kg	<b>lamp type</b> 4 x E26 42 W + 2 x GU10 <b>max watt</b> 42 W HES	Velvet: L82BABESO125O01 Wool: L82BABESO125E01 Eco: L82BABESO125Q01

### Finish

Diffuser textile



Velvet



Eco Friendly



Wool

Fabric lampshade,  
metal structure

Uplight and  
downlight: Up 2560  
lm - Down 5120 lm

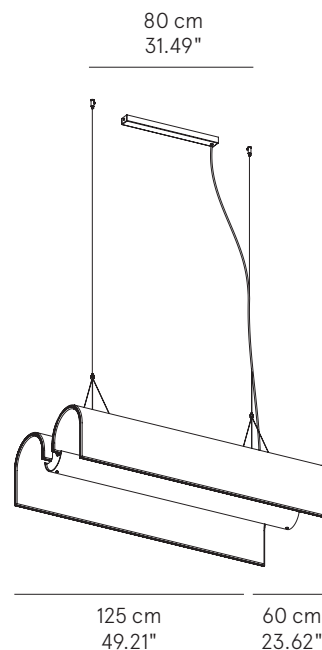
IP20



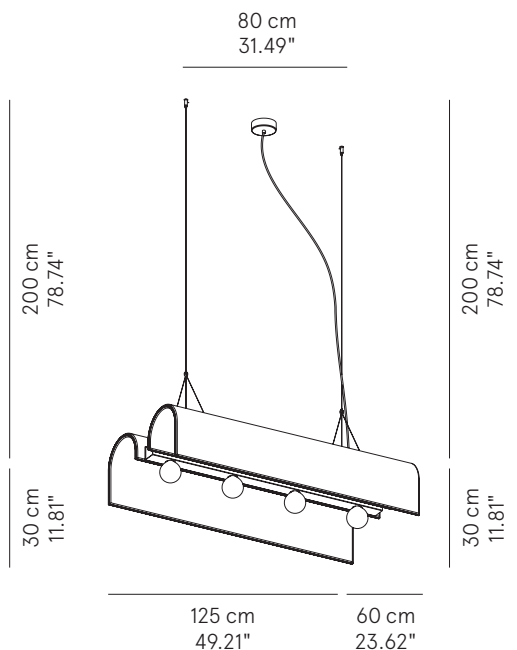
\* on demand

\*\* cable on measure

Basilica



Basilica Ball



SPECIFICATION SHEET

### ORDERING INFO

Model (Order Code)	Finish	LED	Driver Options
-	See page 3-4	<input type="radio"/> 2700K <input type="radio"/> 3000K <input type="radio"/> 4000K	<input type="radio"/> 120V Phase Dimming <input type="radio"/> 120V 0-10V Dimming <input type="radio"/> 277V 0-10V Dimming



# BASILICA™

## SUSPENSION

TYPE:

PROJECT NAME:



VELVET  
100% polyester

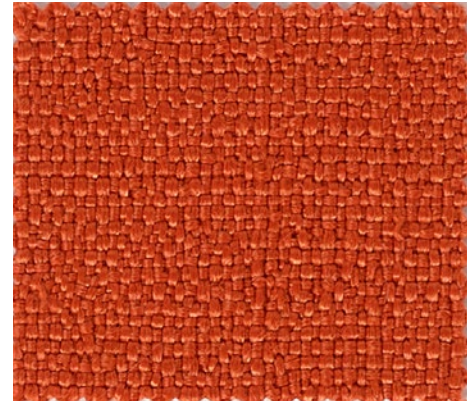


ECO FRIENDLY  
100% recycled post-consumer plastic  
100% biodegradable by imNativ®



Code 455  
Cream

Code 752  
Rust

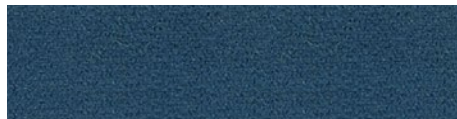


Code 456  
Dove



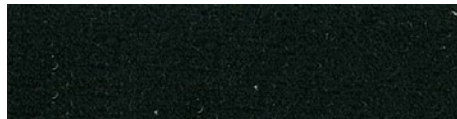
Code 457  
Mustard

Code 750  
Ivory



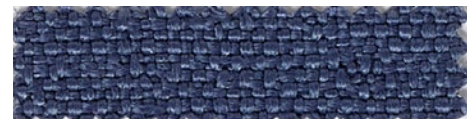
Code 458  
Cornflower

Code 751  
Sage



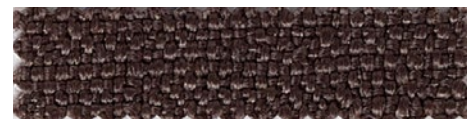
Code 459  
Sherwood

Code 753  
Sugar paper



Code 460  
Rust

Code 754  
Dark grey



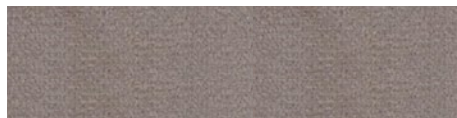
Code 461  
Purple red

Code 755  
Hazel

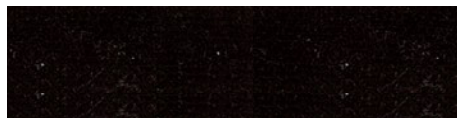


Code 462  
Ocean blue

Code 756  
Ocher



Code 463  
Light grey



Code 464  
Anthracite

SPECIFICATION SHEET



# BASILICA™

SUSPENSION

TYPE:

PROJECT NAME:

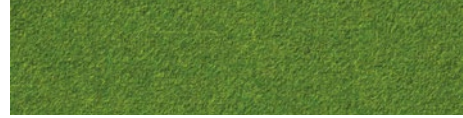


WOOL  
70% wool  
30% polyamide



Code 650  
Sand

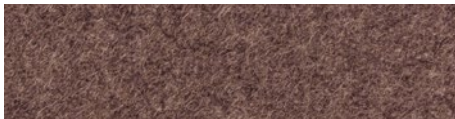
Code 652  
Green



Code 660  
Dark green

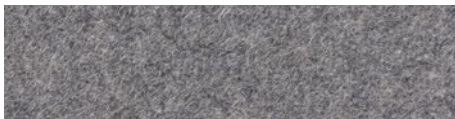
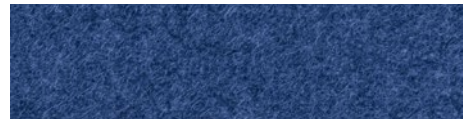


Code 661  
Curry



Code 659  
Chestnut

Code 662  
Turquoise



Code 658  
Grey

Code 655  
Avio blue



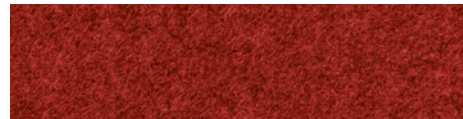
Code 656  
Dark grey

Code 654  
Purple



Code 651  
Orange

Code 657  
Cardinal red



Code 653  
Mustard yellow

SPECIFICATION SHEET