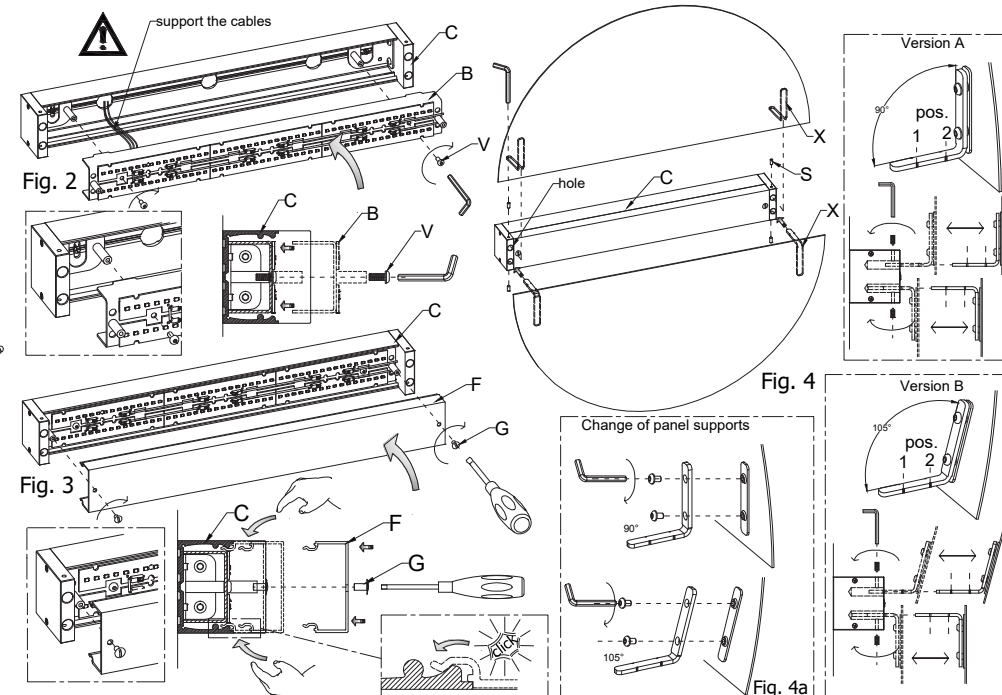
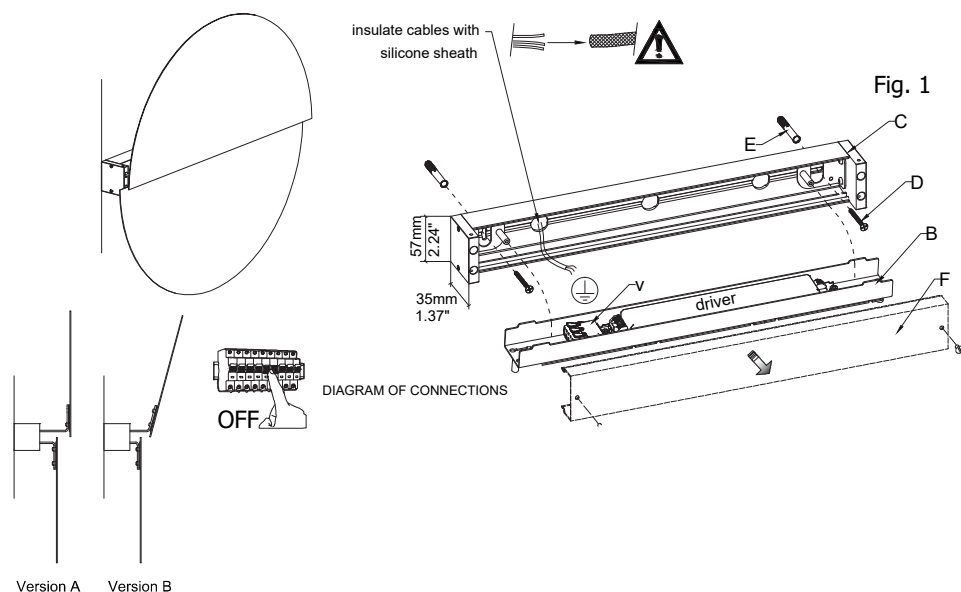


BUTTERFLY™

INSTALLATION INSTRUCTIONS

TYPE:

PROJECT NAME:



INSTRUCTION

- Disconnect the power source.
- Fix the structure (C) to the wall using the screws (D) and the dowels (E). (FIG.1)
- Connect the power cables (V) respecting the indicated polarity. Insulate the cables with silicone sheath supplied (Fig. 1).
- DIMMABLE CONNECTION DIAGRAM see attached sheet
- Insert the electrified part (B) inside the structure (C), taking care not to damage electrical components. facilitate and guide the electric cables inside without damaging them. Tighten the two screws (V) (Fig. 2).
- Insert the diffuser screen, accompany the side parts making the diffuser fall back into place. Screw the two safety screws (V) (Fig. 3).
- Place the panels. Insert the support brackets into the head holes of the structure (C). Screw the safety dowels (S), see sequence (Fig. 4).
- The brackets are equipped with 2 signs for positioning see pos. 1-2 structure limit (Fig. 4).
- It is possible to replace the panel support brackets. (Fig.4A).

ATTENTION:

The products of our production are suitable for the using in usual surroundings with standard temperature and humidity levels.
All the operations have to be done by a technician.

CLEANING:

Switch off the power or pull the plug out.

For the periodical cleaning of the lamp use always gloves and a soft cloth (for glossy surfaces) or a feather duster for the lampshade in fabric or pleated fabric. Don't use aggressive solvents or alcohol.
Avoid absolutely to fold parts which are not expected for folding, in this case welded parts are going to be damaged.