

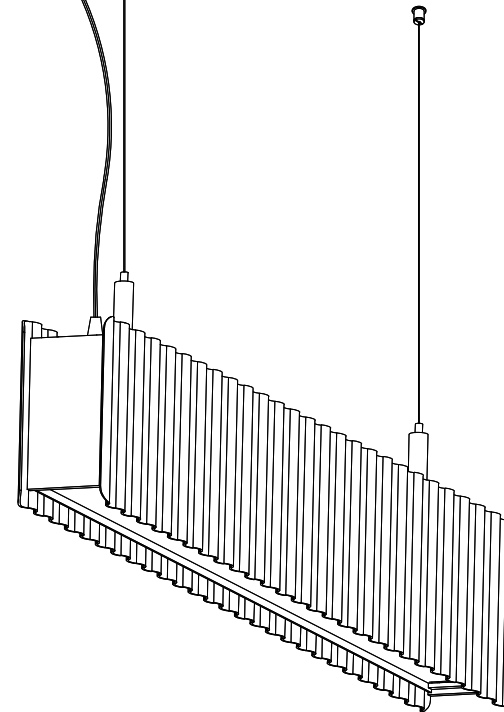
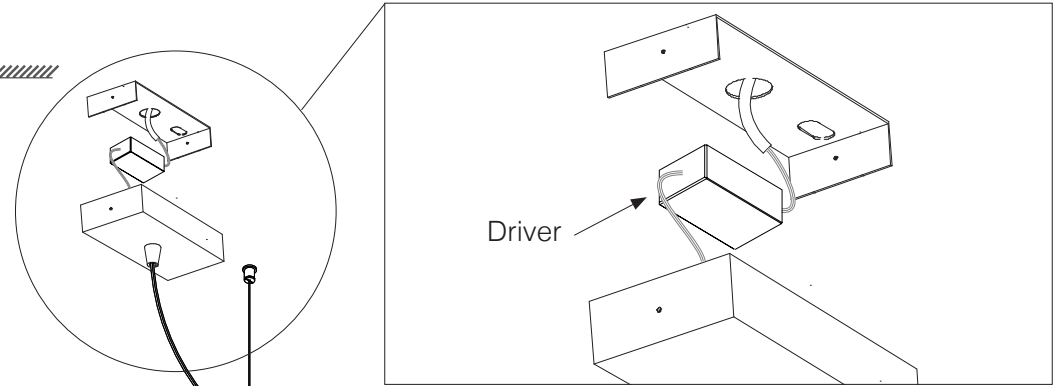
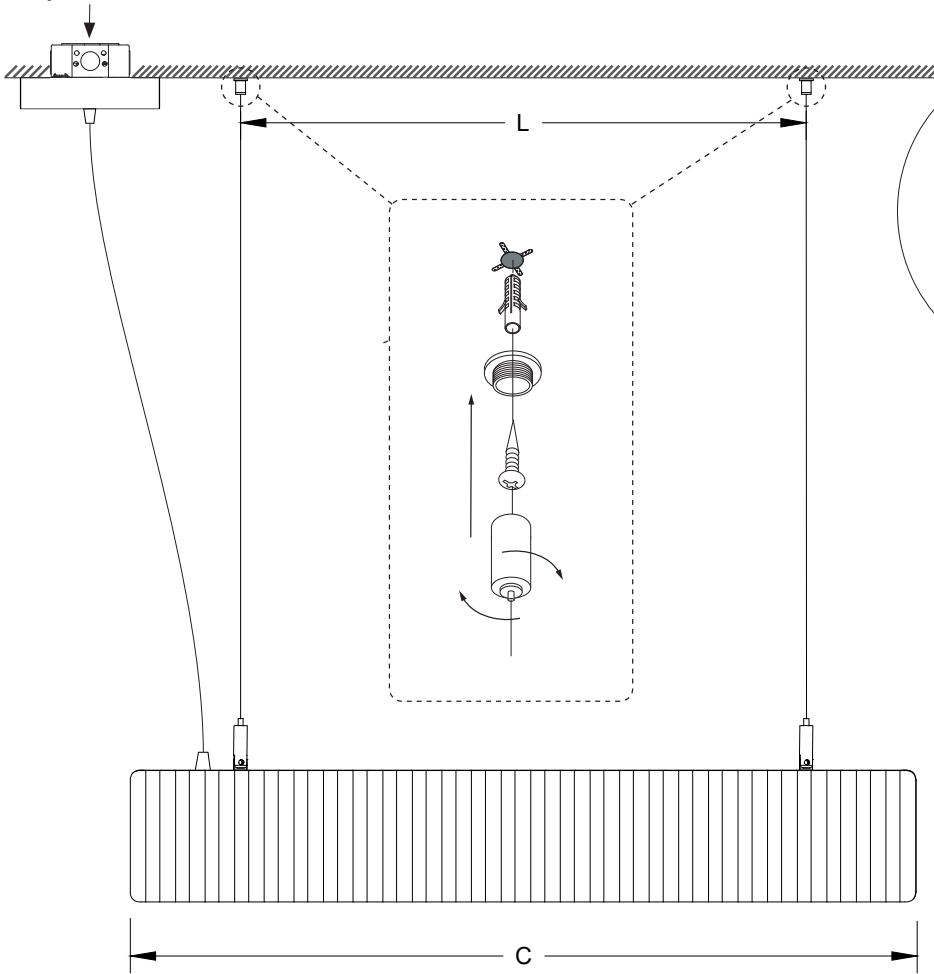
# DUNA™ SURFACE MOUNT DRIVER

SURFACE MOUNT DRIVER - INSTALLATION INSTRUCTIONS

TYPE:

PROJECT NAME:

Junction Box  
By Others



C	L (mm)	ref
597 (23.5")	420 (16.53")	L6531602xxx
1160 (45.66")	980 (38.53")	L6531604xxx
1992 (78.42")	1820 (71.65")	L6531607xxx

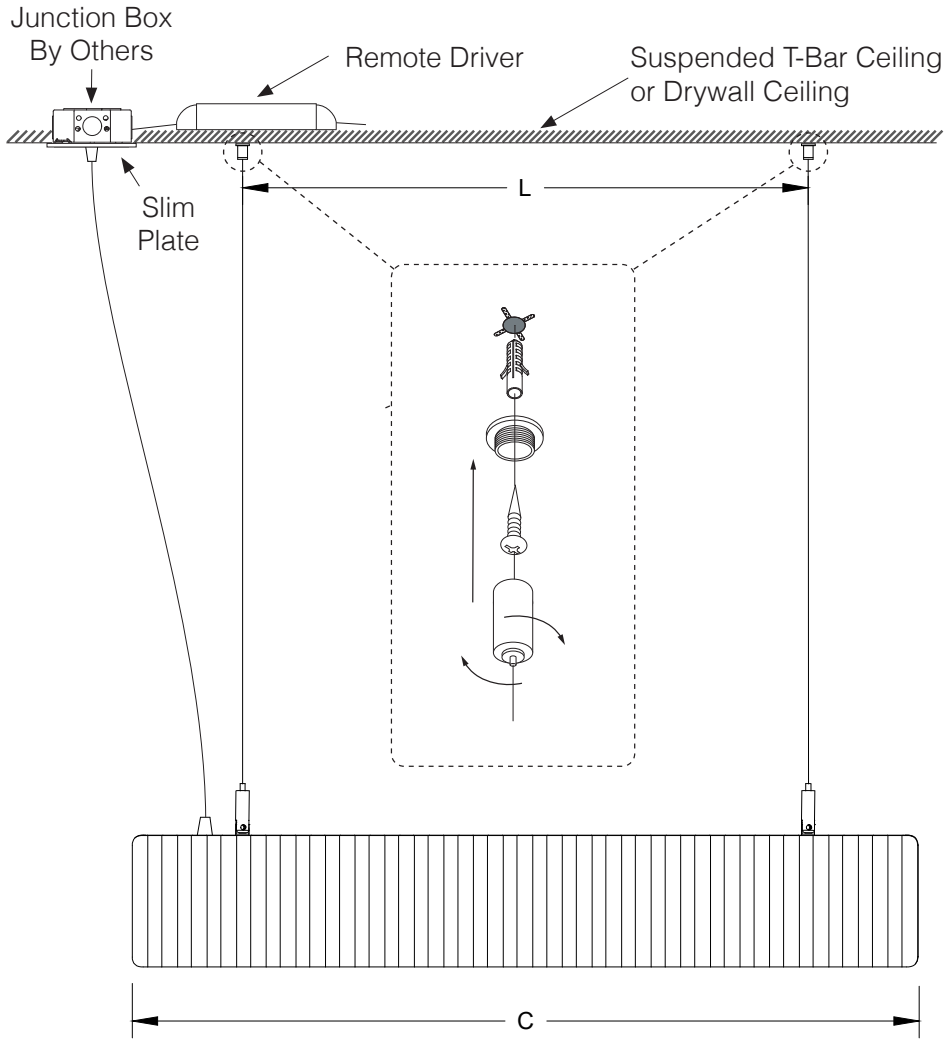
INSTALLATION SHEET

# DUNA™ REMOTE DRIVER

## SLIM PLATE REMOTE DRIVER - INSTALLATION INSTRUCTIONS

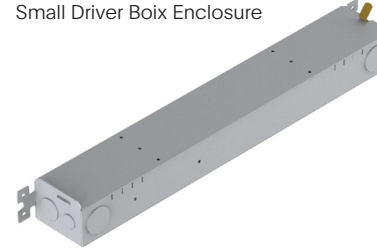
**TYPE:**

**PROJECT NAME:**

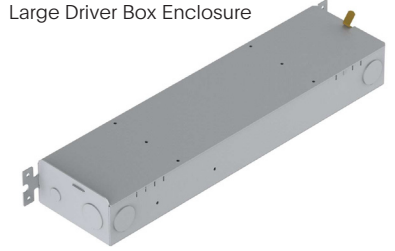


### DRIVER ENCLOSURE INSTALLATION

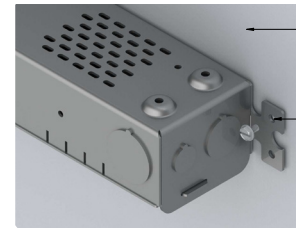
Small Driver Box Enclosure



Large Driver Box Enclosure



Secure Driver box enclosure flange to remote mounting surface by a screw at each end of enclosure



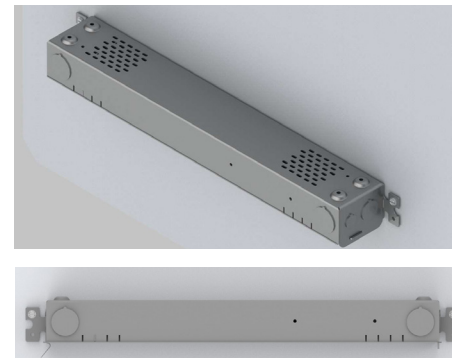
Driver enclosure mounting surface

Driver enclosure, should be installed with flanges secured to mounting surface as shown

Vertical mounting



Horizontal mounting



INSTALLATION SHEET

C	L (mm)	ref
597 (23.5")	420 (16.53")	L6531602xxx
1160 (45.66")	980 (38.53")	L6531604xxx
1992 (78.42")	1820 (71.65")	L6531607xxx