

# ESPO™ 2

WALL LED SYSTEM

**TYPE:**

**PROJECT NAME:**

A wall/ceiling fixture designed to be integrated with the environment, delimiting spaces harmoniously and creating unique display solutions. Espo 2 is a modular double emission wall luminaire made from extruded epoxy polyester powder coated aluminum and it is equipped with a frosted polycarbonate screen and LED light sources. This fixture requires a remote driver (included) which, for maintenance purposes, must be placed in an inspection box at a distance of no more than 10 metres. Its degree of protection against the penetration of dust, solids and liquids is IP40.



SPECIFICATION SHEET

**LEDOLOGY®**

A **Luminart** BRAND

WWW.LUMINARTLIGHTING.COM

# ESPO™ 2

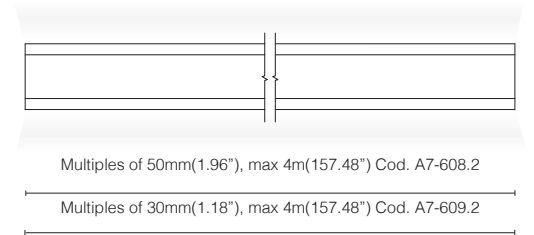
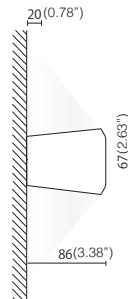
## WALL LED SYSTEM

**TYPE:**

**PROJECT NAME:**

CODE	W	Lm (3000K)
A7-608.2.100...*	2x12 (2x120 led)	2x1200
A7-609.2.100...*	2x25 (2x280 led)	2x2500
A7-002.2	End caps (pair)	
A7-000.2	In-line connector	
0800/DIM	Dimming kit	
0800/EM	Emergency kit with batteries	

\*code per meter (39.3701")



NOTICE: Add 10mm (0.39") to total length of composition



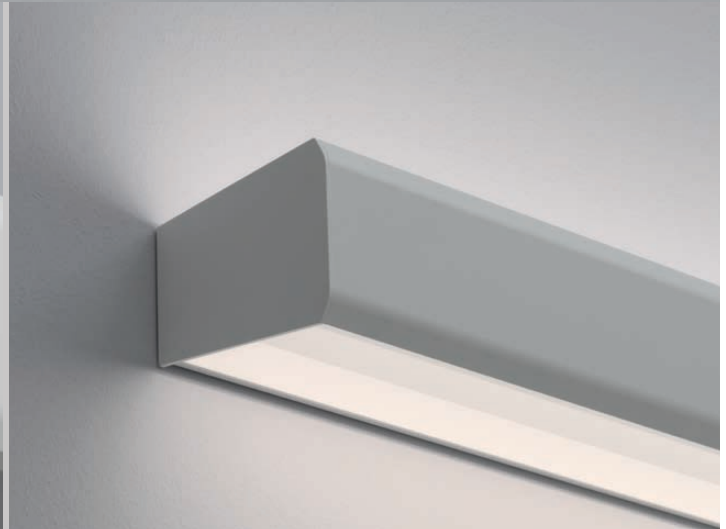
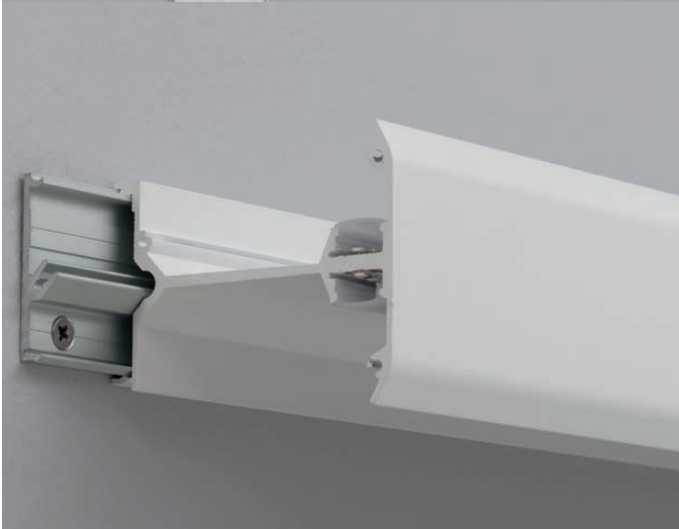
SPECIFICATION SHEET

# ESPO™ 2

WALL LED SYSTEM

TYPE:

PROJECT NAME:



SPECIFICATION SHEET