

INSTRUCTION

- Disconnect the power source.
- Unscrew the handle (A) and lower the canopy (B). (Fig1)
- Fix the bracket (C) with screw (D) and dowels (E) on the ceiling. (Fig1)
- Adjust the length of the cable securing the clamp (F). (Fig1)
- Place the canopy in the ceiling. Screw with care the particular (A). (Fig1)
- Screw the safety screw (K) (Fig.2).
- It is possible to remove the lampshade (L) by unscrewing the particular (I) (Fig. 3).
- Screw the bulb into the socket.

ATTENTION

The products of our production are suitable for the using in usual surroundings with standard temperature and humidity levels.

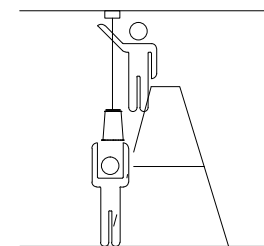
All the operations have to be done by a technician.

CLEANING:

Switch off the power or pull the plug out.

For the periodical cleaning of the lamp use always gloves and a soft cloth (for glossy surfaces) or a feather duster for the lampshade in fabric or pleated fabric. Don't use aggressive solvents or alcohol.

Avoid absolutely to fold parts which are not expected for folding, in this case welded parts are going to be damaged.



2 installers

WEIGHT
Kg 2 / 4.40 lb

FLORINDA DESNUDA™

INSTALLATION INSTRUCTIONS

TYPE:

PROJECT NAME:

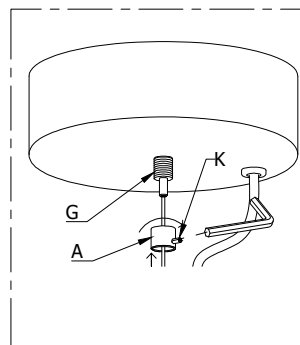
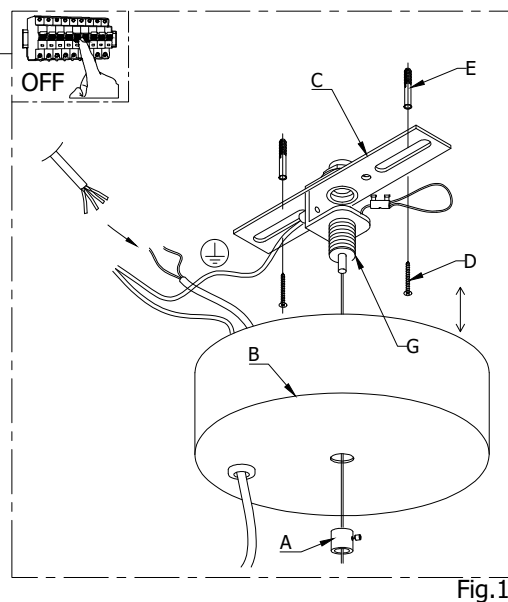
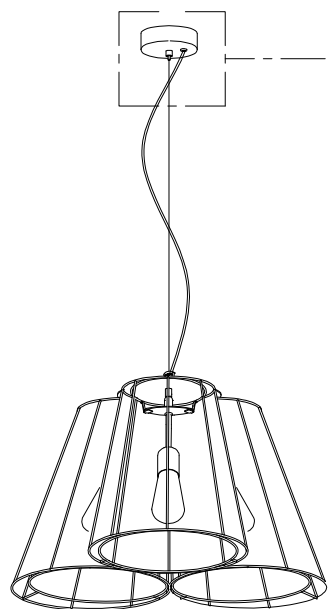


Fig. 2

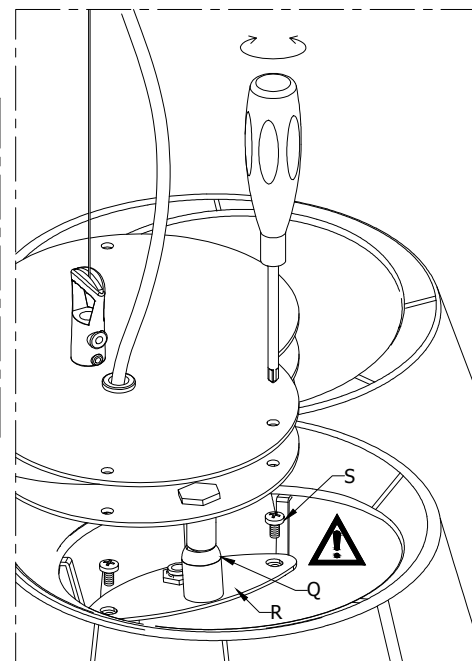


Fig.3

INSTRUCTION

- Switch off the power or pull the plug out.
- Unscrew the handle (A) and lower the canopy (B). Fix the bracket (C) with screw (D) and dowels (E) on the ceiling. (FIG.1)
- **Lift the lamp with the box** to avoid damaging the lampshades
- Adjust the length of the steel cable acting on regulating terminal security (G), push the part of the gripper so that the steel cable runs. (Fig.1)
- Tense the power cable paying attention to the regulation, it doesn't have to be too tensed.
- Place the canopy in the ceiling. Screw with care the particular (A), the block cable (G).(Fig.2).
- Screw the safety screw (K) (Fig.2).
- It's possible to remove completely the lampshades by unscrewing with a screwdriver the two screws (S) that join the lampshade to the structure.(Fig. 3).
- Attached the included bulb to bulb socket.

REGULATION

- For a perfect positioning of the lampshades the lamp is provided with a joint (Q) (Fig. 3).
- To regulate the lampshade catch with the hand the plate (R) and move slightly until the right positioning (Fig. 3).
- **ATTENTION:** for the regulation act as before described, not move the lampshade from other points to not damage parts of the lampshade.

ATTENTION

The products of our production are suitable for the using in usual surroundings with standard temperature and humidity levels.
All the operations have to be done by a technician.

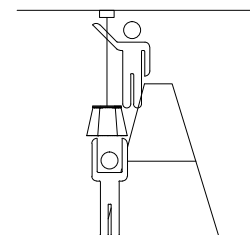
CLEANING

Switch off the power or pull the plug out.

For the periodical cleaning of the lamp use always gloves and a soft cloth or a feather duster.

Don't use aggressive solvents or alcohol .

It's possible to remove completely the lampshades by unscrewing with a screwdriver the two screws (S) that join the lampshade to the structure.



2 installers

WEIGHT
Kg 7 / 15.43 lb

FLORINDA DESNUDA™

INSTALLATION INSTRUCTIONS

TYPE:

PROJECT NAME:

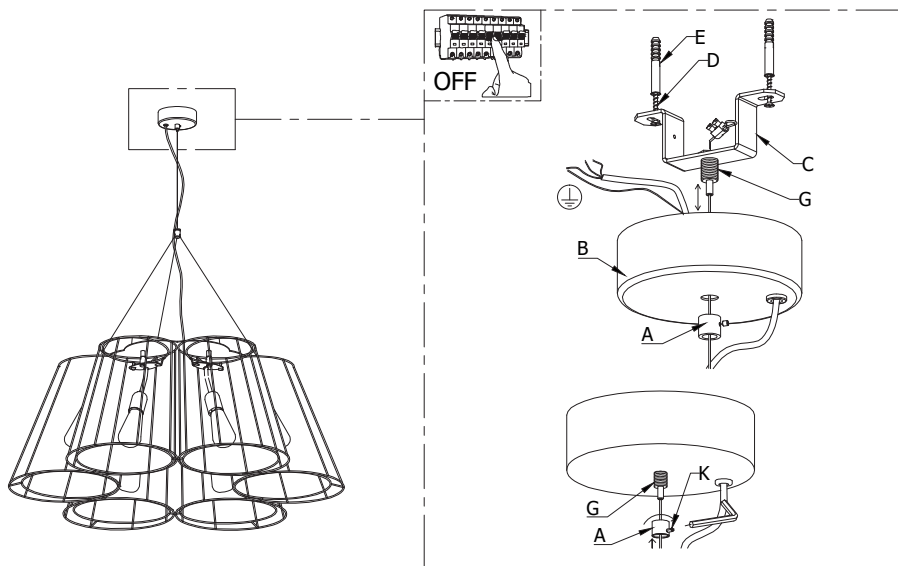


Fig.1

INSTRUCTION

- Switch off the power or pull the plug out.
- Unscrew the handle (A) and lower the canopy (B).(Fig.1)
- **Lift the lamp with the box** to avoid damaging the lampshades
- Adjust the length of the steel cable acting on regulating terminal security (G), push the part of the gripper so that the steel cable runs. (Fig.1)
- Tense the power cable paying attention to the regulation, it doesn't have to be too tensed.
- Place the canopy in the ceiling. Screw with care the particular (A), the block cable (G).(Fig.1).
- Screw the safety screw (K) (Fig.1).
- It's possible to remove completely the lampshades by unscrewing with a screwdriver the two screws (S) that join the lampshade to the structure.
- For the central lampshade unscrew the ring nut (O) from the lamp socket (P) (Fig. 2).
- Attached the included bulb to bulb socket.

REGULATION

- For a perfect positioning of the lampshades the lamp is provided with a joint (Q) (Fig. 3).
- To regulate the lampshade catch with the hand the plate (R) and move slightly until the right positioning (Fig. 3).
- ATTENTION: for the regulation act as before described, not move the lampshade from other points to not damage parts of the lampshade.

ATTENTION

The products of our production are suitable for the using in usual surroundings with standard temperature and humidity levels.
All the operations have to be done by a technician.

CLEANING

Switch off the power or pull the plug out.

For the periodical cleaning of the lamp use always gloves and a soft cloth or a feather duster.

Don't use aggressive solvents or alcohol .

It's possible to remove completely the lampshades by unscrewing with a screwdriver the two screws (S) that join the lampshade to the structure.

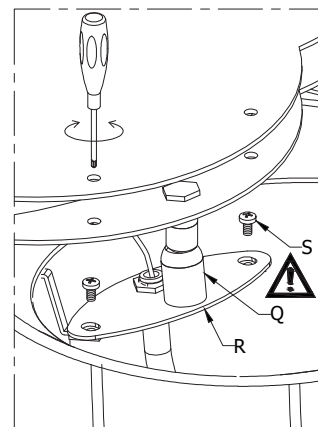
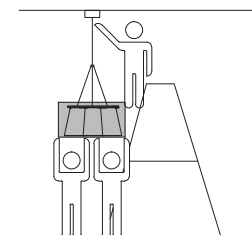
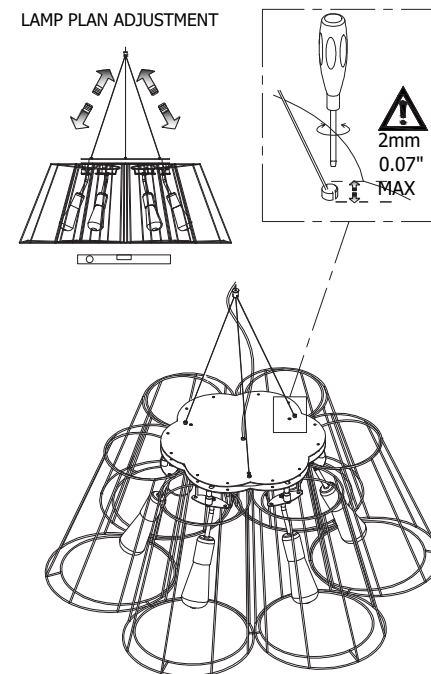


Fig. 2



3 installers

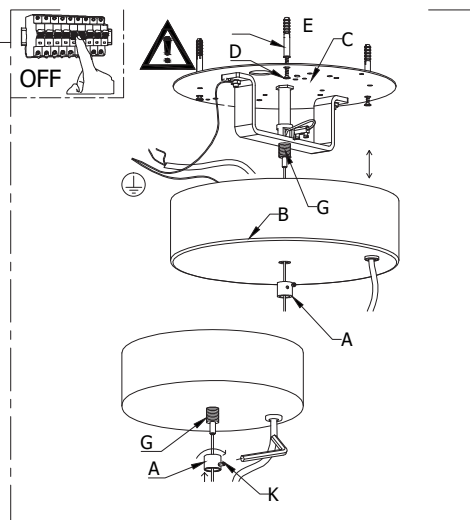
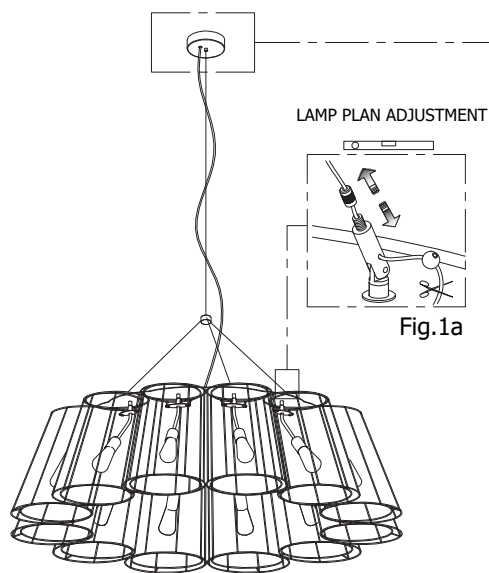
WEIGHT
Kg 10 / 22.04 lb

FLORINDA DESNUDA™

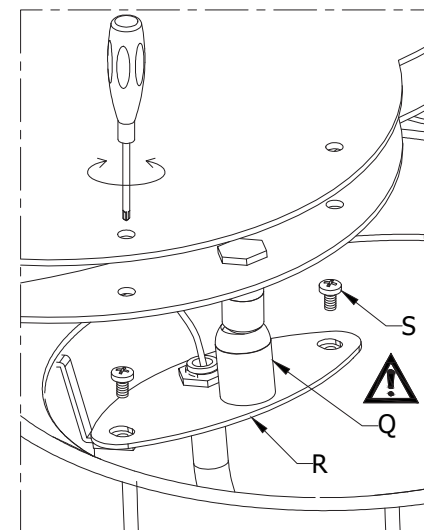
INSTALLATION INSTRUCTIONS

TYPE:

PROJECT NAME:



Fixing! it is essential that the ceiling anchorage is properly carried out it is checked, considering the characteristics of the anchor and the type of connecting support (ceiling).



INSTRUCTION

- Switch off the power or pull the plug out.
- Unscrew the handle (A) and lower the canopy (B).(FIG.1)
- **Lift the lamp with the box** to avoid damaging the lampshades
- Adjust the length of the steel cable acting on regulating terminal security (G), push the part of the gripper so that the steel cable runs. (Fig.1)
- Connect the network cables at the clamp (E) , check the polarity as shows and close again the box (D) (Fig. 1).
- Tense the power cable paying attention to the regulation , it dosen't have to be too tensed.
- Place the canopy in the ceiling. Screw with care the particular (A), the block cable (G).(Fig.1).
- Screw the safety screw (K) (Fig.1).
- Attached the included bulb to bulb socket.

REGULATION

- For a perfect positioning of the lampshades the lamp is provided with a joint (Q) (Fig. 2).
- To regulate the lampshade catch with the hand the plate (R) and move slightly until the right positioning (Fig.2).
- **ATTENTION:** for the regulation act as before described, not move the lampshade from other points to not damage parts of the lampshade.

ATTENTION

The products of our production are suitable for the using in usual surroundings with standard temperature and humidity levels. All the operations have to be done by a technician.

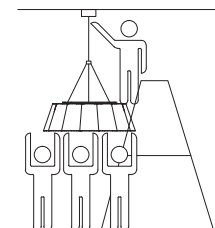
CLEANING

Switch off the power or pull the plug out.

For the periodical cleaning of the lamp use always gloves and a soft cloth or a feather duster.

Don't use aggressive solvents or alcohol .

It's possible to remove completely the lampshades by unscrewing with a screwdriver the two screws (S) that join the lampshade to the structure.



4 installers

WEIGHT
Kg 30 / 66.13lb