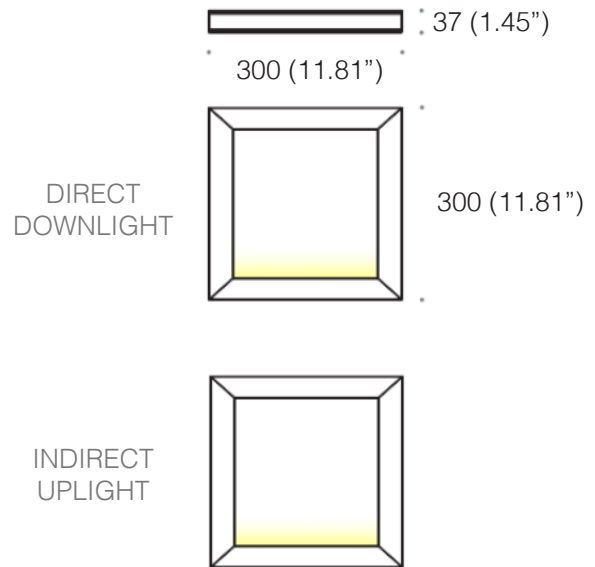


FMC™ 3X3

CEILING

TYPE:

PROJECT NAME:



FMC's concept is based on rectangles and squares. A significant advantage of the series is the wide range of available dimensions in terms of both height and profile length. This allows for the creation of striking spatial compositions, serving as a distinctive decorative element in any interior.

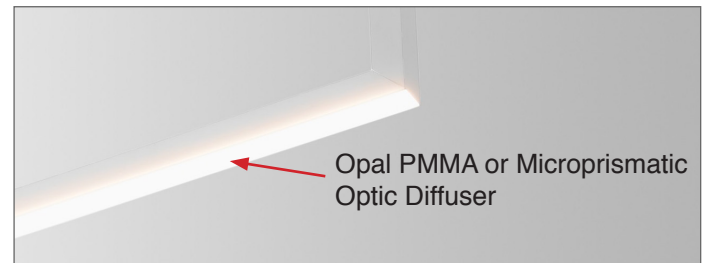
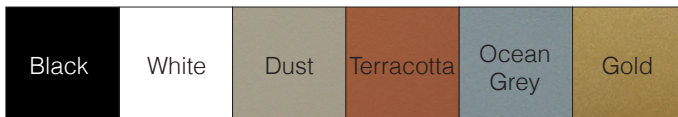
Color rendering: CRI 90

Materials: Aluminum body, polycarbonate

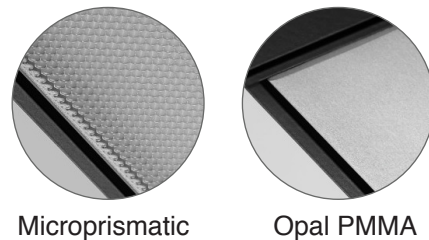
Ingress protection: IP20

Lum. flux of light source [lm]	Downlight 14W	760 lm
	Uplight 7.5W	200 lm

Finish options:



Optic diffuser options:



SPECIFICATION SHEET

ORDERING INFO

Model (Order Code)	Structure Finishes	Optic Diffuser Options	LED	Dimming Options
<input type="radio"/> L543.1340 Direct downlight 14W	<input type="radio"/> 12: Black	<input type="radio"/> OP: Opal PMMA	<input type="radio"/> 27: 2700K	<input type="radio"/> 120V LTE Remote driver
<input type="radio"/> L543.1362 Indirect uplight 7.5W	<input type="radio"/> 13: White	<input type="radio"/> MP: Microprismatic (downlight version only)	<input type="radio"/> 30: 3000K	<input type="radio"/> 120V-277V 0-10V Remote driver
	<input type="radio"/> 21: Terracotta		<input type="radio"/> 40: 4000K	<input type="radio"/> 120V LTE Integral driver
	<input type="radio"/> 22: Ocean Grey			<input type="radio"/> 120V-277V 0-10V Integral driver
	<input type="radio"/> 23: Dust			
	<input type="radio"/> 80: Gold			

Installation Note: Fixture with integral driver is installed to a 4x4" backplate.

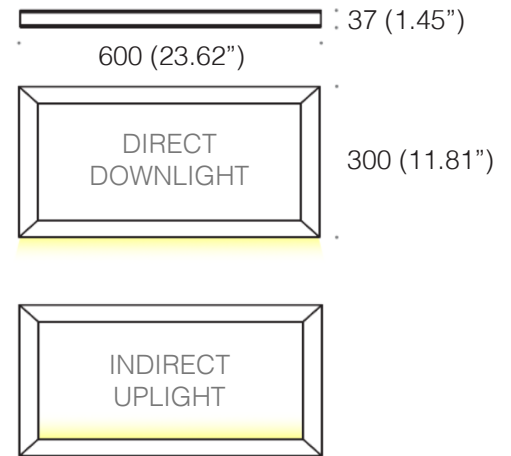


FMC™ 3X6

CEILING

TYPE:

PROJECT NAME:



FMC's concept is based on rectangles and squares. A significant advantage of the series is the wide range of available dimensions in terms of both height and profile length. This allows for the creation of striking spatial compositions, serving as a distinctive decorative element in any interior.

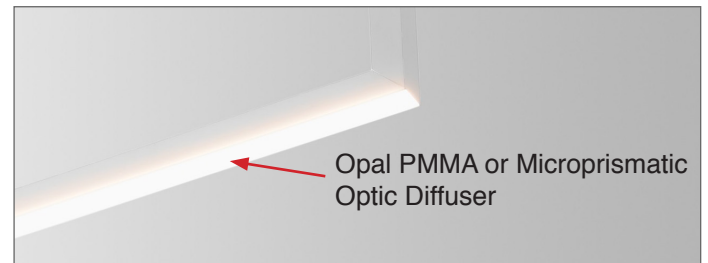
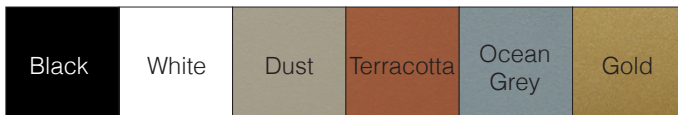
Color rendering: CRI 90

Materials: Aluminum body, polycarbonate

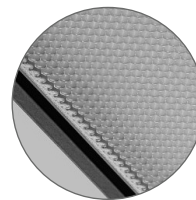
Ingress protection: IP20

Lum. flux of light source [lm]	Downlight 28W	1600 lm
		Uplight 20W

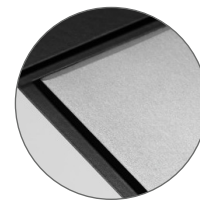
Finish options:



Optic diffuser options:



Microprismatic



Opal PMMA

SPECIFICATION SHEET

ORDERING INFO

Model (Order Code)	Structure Finishes	Optic Diffuser Options	LED	Dimming Options
<input type="radio"/> L543.1342 Direct downlight 28W	<input type="radio"/> 12: Black	<input type="radio"/> OP: Opal PMMA	<input type="radio"/> 27: 2700K	<input type="radio"/> 120V LTE Remote driver
<input type="radio"/> L543.1364 Indirect uplight 20W	<input type="radio"/> 13: White	<input type="radio"/> MP: Microprismatic (downlight version only)	<input type="radio"/> 30: 3000K	<input type="radio"/> 120V-277V 0-10V Remote driver
	<input type="radio"/> 21: Terracotta		<input type="radio"/> 40: 4000K	<input type="radio"/> 120V LTE Integral driver
	<input type="radio"/> 22: Ocean Grey			<input type="radio"/> 120V-277V 0-10V Integral driver
	<input type="radio"/> 23: Dust			
	<input type="radio"/> 80: Gold			

Installation Note: Fixture with integral driver is installed to a 4x4" backplate.

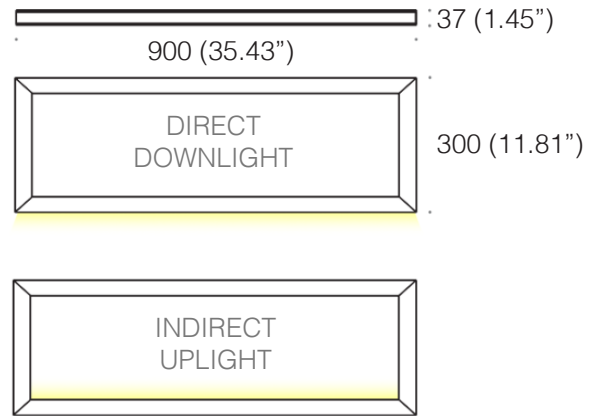


FMC™ 3X9

CEILING

TYPE:

PROJECT NAME:



FMC's concept is based on rectangles and squares. A significant advantage of the series is the wide range of available dimensions in terms of both height and profile length. This allows for the creation of striking spatial compositions, serving as a distinctive decorative element in any interior.

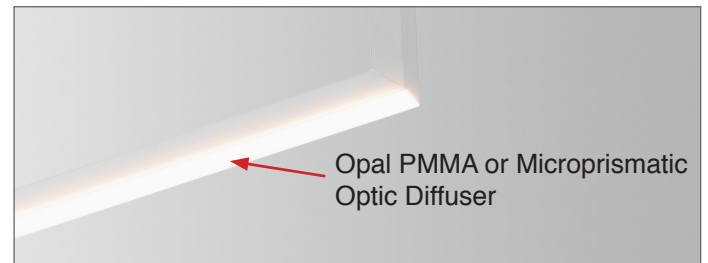
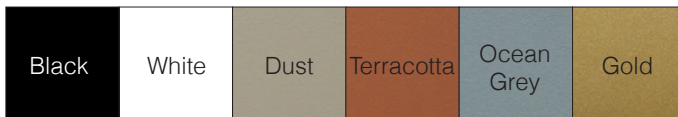
Color rendering: CRI 90

Materials: Aluminum body, polycarbonate

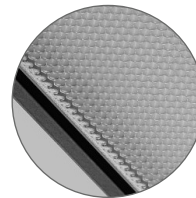
Ingress protection: IP20

Lum. flux of light source [lm]	Downlight 38W	2500 lm
	Uplight 34W	1300 lm

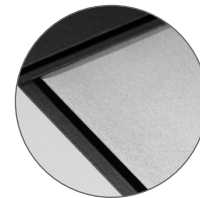
Finish options:



Optic diffuser options:



Microprismatic



Opal PMMA

SPECIFICATION SHEET

ORDERING INFO

Model (Order Code)	Structure Finishes	Optic Diffuser Options	LED	Dimming Options
<input type="radio"/> L543.1344 Direct downlight 38W	<input type="radio"/> 12: Black	<input type="radio"/> OP: Opal PMMA	<input type="radio"/> 27: 2700K	<input type="radio"/> 120V LTE Remote driver
<input type="radio"/> L543.1366 Indirect uplight 34W	<input type="radio"/> 13: White	<input type="radio"/> MP: Microprismatic (downlight version only)	<input type="radio"/> 30: 3000K	<input type="radio"/> 120V-277V 0-10V Remote driver
	<input type="radio"/> 21: Terracotta		<input type="radio"/> 40: 4000K	<input type="radio"/> 120V LTE Integral driver
	<input type="radio"/> 22: Ocean Grey			<input type="radio"/> 120V-277V 0-10V Integral driver
	<input type="radio"/> 23: Dust			
	<input type="radio"/> 80: Gold			

Installation Note: Fixture with integral driver is installed to a 4x4" backplate.

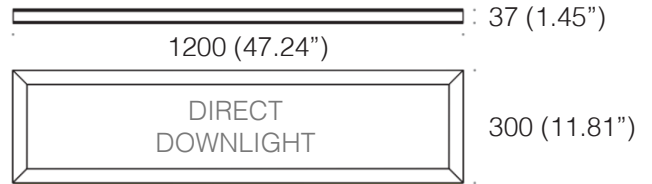


FMC™ 3X12

CEILING

TYPE:

PROJECT NAME:



FMC's concept is based on rectangles and squares. A significant advantage of the series is the wide range of available dimensions in terms of both height and profile length. This allows for the creation of striking spatial compositions, serving as a distinctive decorative element in any interior.

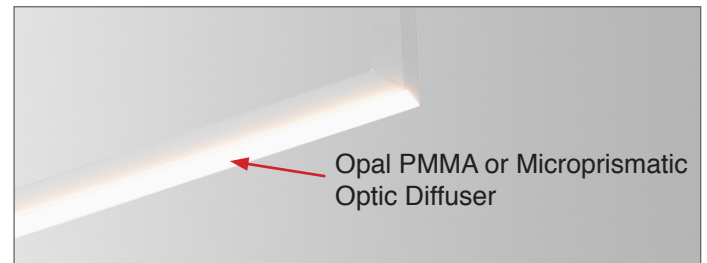
Color rendering: CRI 90

Materials: Aluminum body, polycarbonate

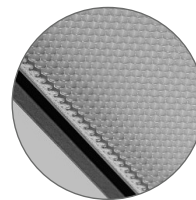
Ingress protection: IP20

Lum. flux of light source [lm]	Downlight 49W	3400 lm
	Uplight 44W	1700 lm

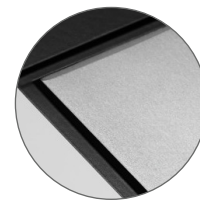
Finish options:



Optic diffuser options:



Microprismatic



Opal PMMA

SPECIFICATION SHEET

ORDERING INFO

Model (Order Code)	Structure Finishes	Optic Diffuser Options	LED	Dimming Options
<input type="radio"/> L543.1346 Direct downlight 49W	<input type="radio"/> 12: Black	<input type="radio"/> OP: Opal PMMA	<input type="radio"/> 27: 2700K	<input type="radio"/> 120V LTE Remote driver
<input type="radio"/> L543.1368 Indirect uplight 44W	<input type="radio"/> 13: White	<input type="radio"/> MP: Microprismatic (downlight version only)	<input type="radio"/> 30: 3000K	<input type="radio"/> 120V-277V 0-10V Remote driver
	<input type="radio"/> 21: Terracotta		<input type="radio"/> 40: 4000K	<input type="radio"/> 120V LTE Integral driver
	<input type="radio"/> 22: Ocean Grey			<input type="radio"/> 120V-277V 0-10V Integral driver
	<input type="radio"/> 23: Dust			
	<input type="radio"/> 80: Gold			

Installation Note: Fixture with integral driver is installed to a 4x4" backplate.

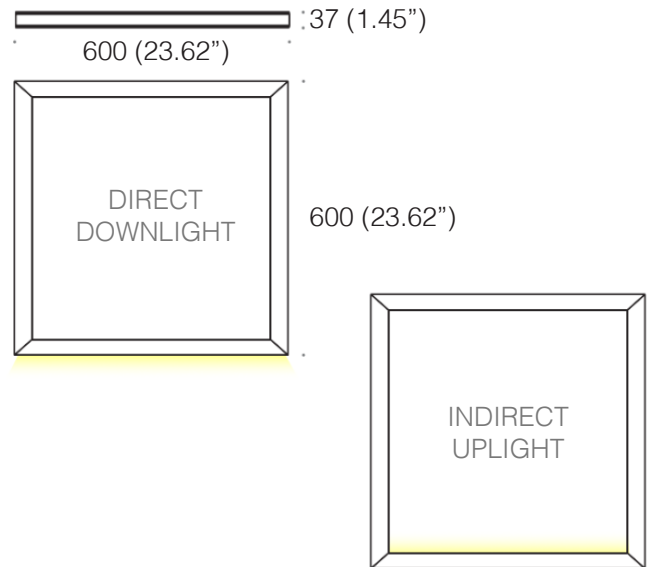
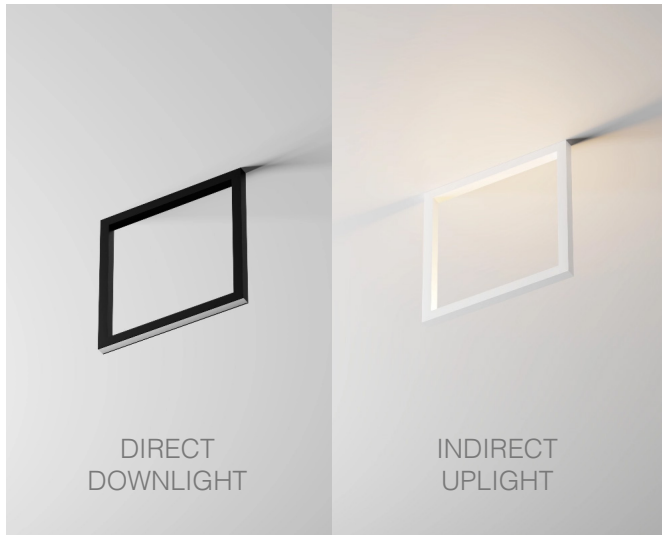


FMC™ 6X6

CEILING

TYPE:

PROJECT NAME:



FMC's concept is based on rectangles and squares. A significant advantage of the series is the wide range of available dimensions in terms of both height and profile length. This allows for the creation of striking spatial compositions, serving as a distinctive decorative element in any interior.

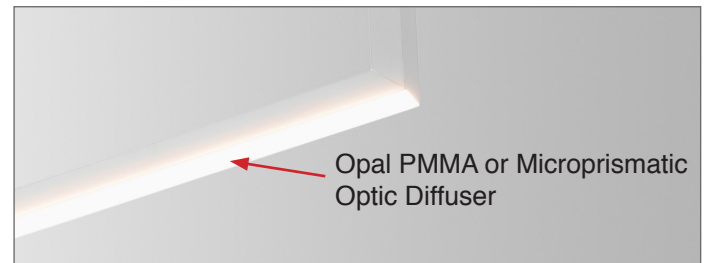
Color rendering: CRI 90

Materials: Aluminum body, polycarbonate

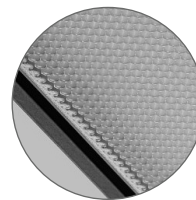
Ingress protection: IP20

Lum. flux of light source [lm]	Downlight 28W	1600 lm
	Uplight 20W	600 lm

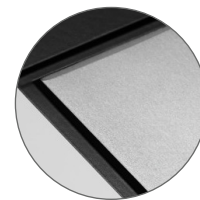
Finish options:



Optic diffuser options:



Microprismatic



Opal PMMA

SPECIFICATION SHEET

ORDERING INFO

Model (Order Code)	Structure Finishes	Optic Diffuser Options	LED	Dimming Options
<input type="radio"/> L543.1348 Direct downlight 28W	<input type="radio"/> 12: Black	<input type="radio"/> OP: Opal PMMA	<input type="radio"/> 27: 2700K	<input type="radio"/> 120V LTE Remote driver
<input type="radio"/> L543.1370 Indirect uplight 20W	<input type="radio"/> 13: White	<input type="radio"/> MP: Microprismatic (downlight version only)	<input type="radio"/> 30: 3000K	<input type="radio"/> 120V-277V 0-10V Remote driver
	<input type="radio"/> 21: Terracotta		<input type="radio"/> 40: 4000K	<input type="radio"/> 120V LTE Integral driver
	<input type="radio"/> 22: Ocean Grey			<input type="radio"/> 120V-277V 0-10V Integral driver
	<input type="radio"/> 23: Dust			
	<input type="radio"/> 80: Gold			

Installation Note: Fixture with integral driver is installed to a 4x4" backplate.

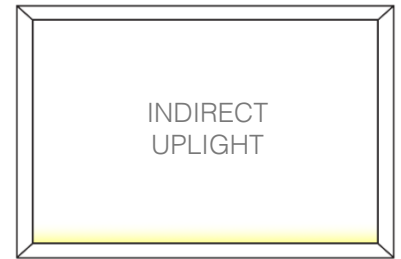
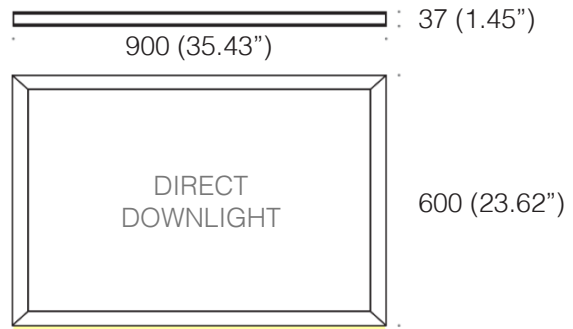


FMC™ 6X9

CEILING

TYPE:

PROJECT NAME:



FMC's concept is based on rectangles and squares. A significant advantage of the series is the wide range of available dimensions in terms of both height and profile length. This allows for the creation of striking spatial compositions, serving as a distinctive decorative element in any interior.

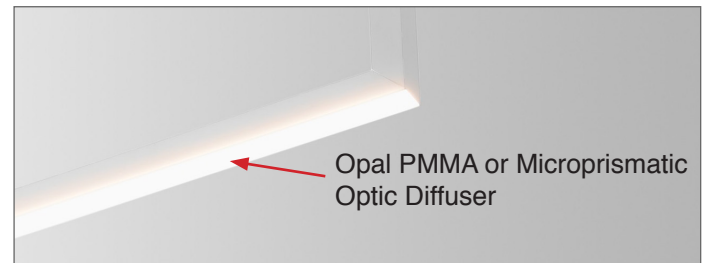
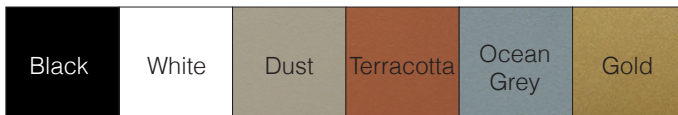
Color rendering: CRI 90

Materials: Aluminum body, polycarbonate

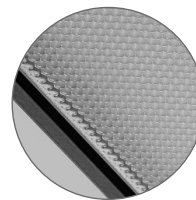
Ingress protection: IP20

Lum. flux of light source [lm]	Downlight 38W	2500 lm
	Uplight 34W	1300 lm

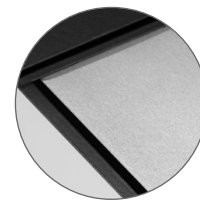
Finish options:



Optic diffuser options:



Microprismatic



Opal PMMA

SPECIFICATION SHEET

ORDERING INFO

Model (Order Code)	Structure Finishes	Optic Diffuser Options	LED	Dimming Options
<input type="radio"/> L543.1350 Direct downlight 38W	<input type="radio"/> 12: Black	<input type="radio"/> OP: Opal PMMA	<input type="radio"/> 27: 2700K	<input type="radio"/> 120V LTE Remote driver
<input type="radio"/> L543.1372 Indirect uplight 34W	<input type="radio"/> 13: White	<input type="radio"/> MP: Microprismatic (downlight version only)	<input type="radio"/> 30: 3000K	<input type="radio"/> 120V-277V 0-10V Remote driver
	<input type="radio"/> 21: Terracotta		<input type="radio"/> 40: 4000K	<input type="radio"/> 120V LTE Integral driver
	<input type="radio"/> 22: Ocean Grey			<input type="radio"/> 120V-277V 0-10V Integral driver
	<input type="radio"/> 23: Dust			
	<input type="radio"/> 80: Gold			

Installation Note: Fixture with integral driver is installed to a 4x4" backplate.

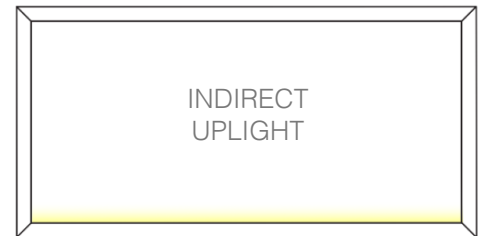
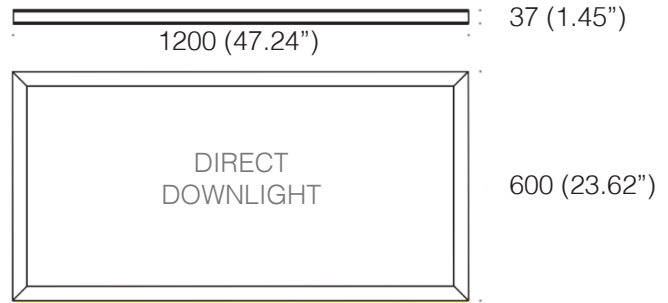
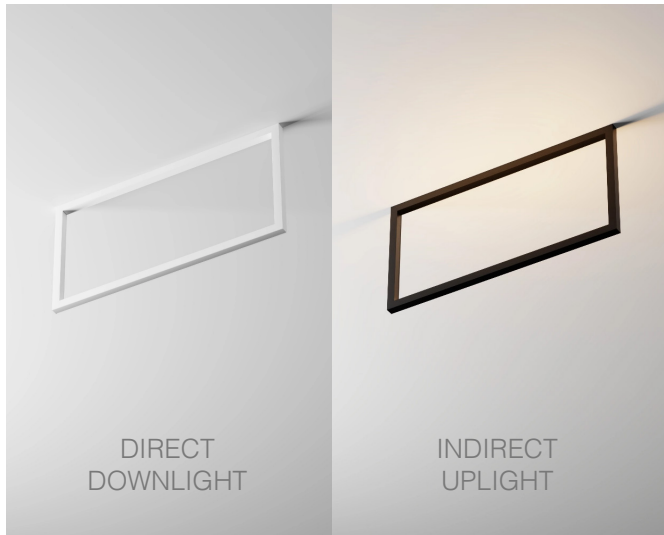


FMC™ 6X12

CEILING

TYPE:

PROJECT NAME:



FMC's concept is based on rectangles and squares. A significant advantage of the series is the wide range of available dimensions in terms of both height and profile length. This allows for the creation of striking spatial compositions, serving as a distinctive decorative element in any interior.

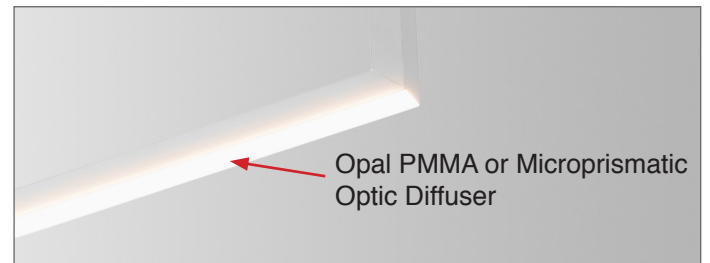
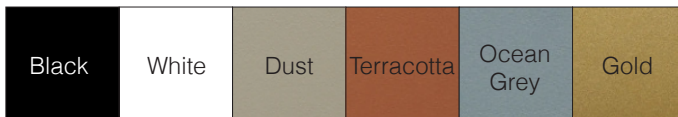
Color rendering: CRI 90

Materials: Aluminum body, polycarbonate

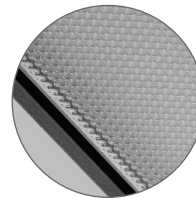
Ingress protection: IP20

Lum. flux of light source [lm]	Downlight 49W	3400 lm
	Uplight 44W	1700 lm

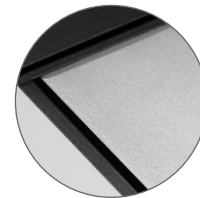
Finish options:



Optic diffuser options:



Microprismatic



Opal PMMA

SPECIFICATION SHEET

ORDERING INFO

Model (Order Code)	Structure Finishes	Optic Diffuser Options	LED	Dimming Options
<input type="radio"/> L543.1352 Direct downlight 49W	<input type="radio"/> 12: Black	<input type="radio"/> OP: Opal PMMA	<input type="radio"/> 27: 2700K	<input type="radio"/> 120V LTE Remote driver
<input type="radio"/> L543.1374 Indirect uplight 44W	<input type="radio"/> 13: White	<input type="radio"/> MP: Microprismatic (downlight version only)	<input type="radio"/> 30: 3000K	<input type="radio"/> 120V-277V 0-10V Remote driver
	<input type="radio"/> 21: Terracotta		<input type="radio"/> 40: 4000K	<input type="radio"/> 120V LTE Integral driver
	<input type="radio"/> 22: Ocean Grey			<input type="radio"/> 120V-277V 0-10V Integral driver
	<input type="radio"/> 23: Dust			
	<input type="radio"/> 80: Gold			

Installation Note: Fixture with integral driver is installed to a 4x4" backplate.

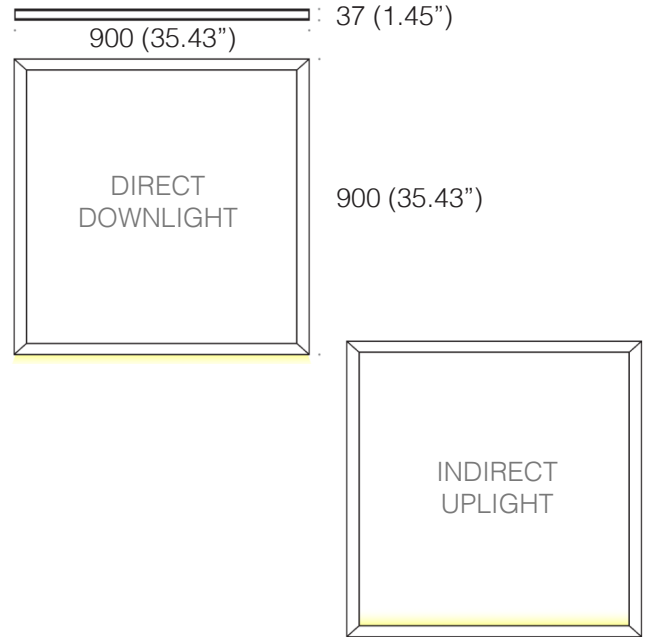
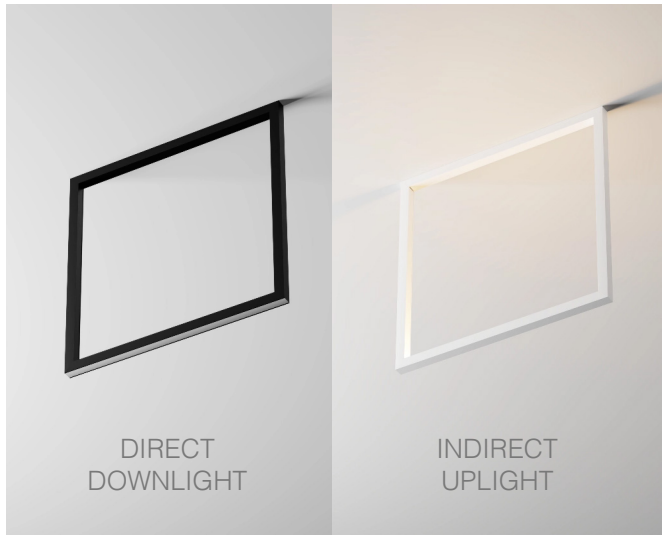


FMC™ 9X9

CEILING

TYPE:

PROJECT NAME:



FMC's concept is based on rectangles and squares. A significant advantage of the series is the wide range of available dimensions in terms of both height and profile length. This allows for the creation of striking spatial compositions, serving as a distinctive decorative element in any interior.

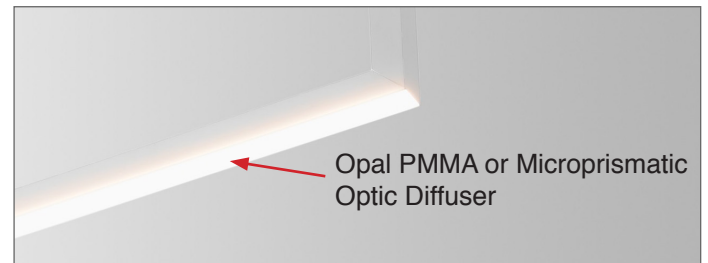
Color rendering: CRI 90

Materials: Aluminum body, polycarbonate

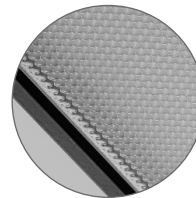
Ingress protection: IP20

Lum. flux of light source [lm]	Downlight 38W	2500 lm
	Uplight 34W	1300 lm

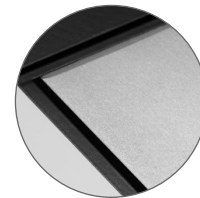
Finish options:



Optic diffuser options:



Microprismatic



Opal PMMA

SPECIFICATION SHEET

ORDERING INFO

Model (Order Code)	Structure Finishes	Optic Diffuser Options	LED	Dimming Options
<input type="radio"/> L543.1354 Direct downlight 38W	<input type="radio"/> 12: Black	<input type="radio"/> OP: Opal PMMA	<input type="radio"/> 27: 2700K	<input type="radio"/> 120V LTE Remote driver
<input type="radio"/> L543.1376 Indirect uplight 34W	<input type="radio"/> 13: White	<input type="radio"/> MP: Microprismatic (downlight version only)	<input type="radio"/> 30: 3000K	<input type="radio"/> 120V-277V 0-10V Remote driver
	<input type="radio"/> 21: Terracotta		<input type="radio"/> 40: 4000K	<input type="radio"/> 120V LTE Integral driver
	<input type="radio"/> 22: Ocean Grey			<input type="radio"/> 120V-277V 0-10V Integral driver
	<input type="radio"/> 23: Dust			
	<input type="radio"/> 80: Gold			

Installation Note: Fixture with integral driver is installed to a 4x4" backplate.

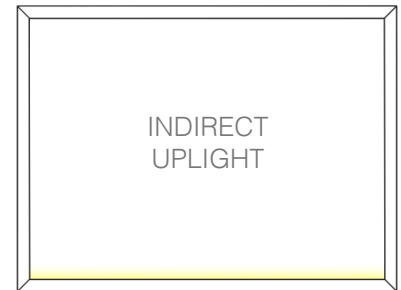
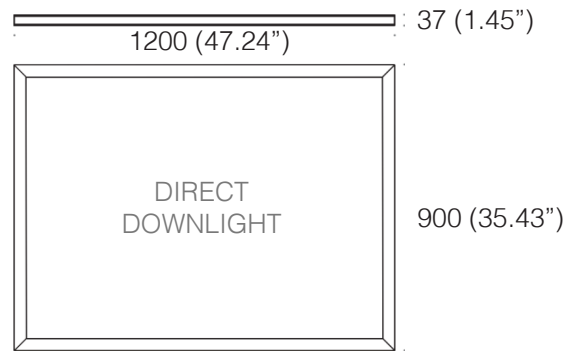
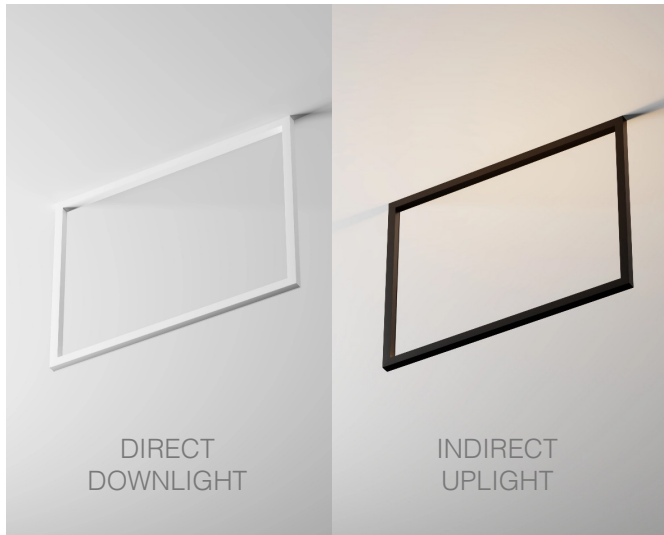


FMC™ 9X12

CEILING

TYPE:

PROJECT NAME:



FMC's concept is based on rectangles and squares. A significant advantage of the series is the wide range of available dimensions in terms of both height and profile length. This allows for the creation of striking spatial compositions, serving as a distinctive decorative element in any interior.

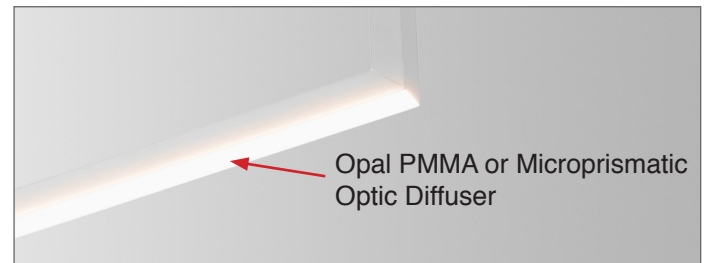
Color rendering: CRI 90

Materials: Aluminum body, polycarbonate

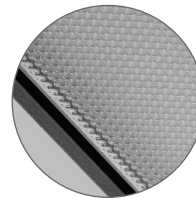
Ingress protection: IP20

Lum. flux of light source [lm]	Downlight 49W	3400 lm
	Uplight 44W	1700 lm

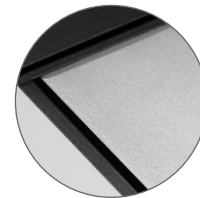
Finish options:



Optic diffuser options:



Microprismatic



Opal PMMA

SPECIFICATION SHEET

ORDERING INFO

Model (Order Code)	Structure Finishes	Optic Diffuser Options	LED	Dimming Options
<input type="radio"/> L543.1356 Direct downlight 49W	<input type="radio"/> 12: Black	<input type="radio"/> OP: Opal PMMA	<input type="radio"/> 27: 2700K	<input type="radio"/> 120V LTE Remote driver
<input type="radio"/> L543.1378 Indirect uplight 44W	<input type="radio"/> 13: White	<input type="radio"/> MP: Microprismatic (downlight version only)	<input type="radio"/> 30: 3000K	<input type="radio"/> 120V-277V 0-10V Remote driver
	<input type="radio"/> 21: Terracotta		<input type="radio"/> 40: 4000K	<input type="radio"/> 120V LTE Integral driver
	<input type="radio"/> 22: Ocean Grey			<input type="radio"/> 120V-277V 0-10V Integral driver
	<input type="radio"/> 23: Dust			
	<input type="radio"/> 80: Gold			

Installation Note: Fixture with integral driver is installed to a 4x4" backplate.

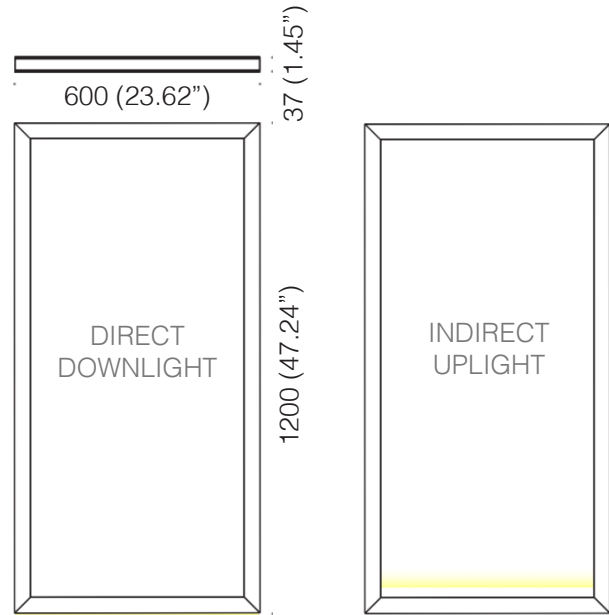
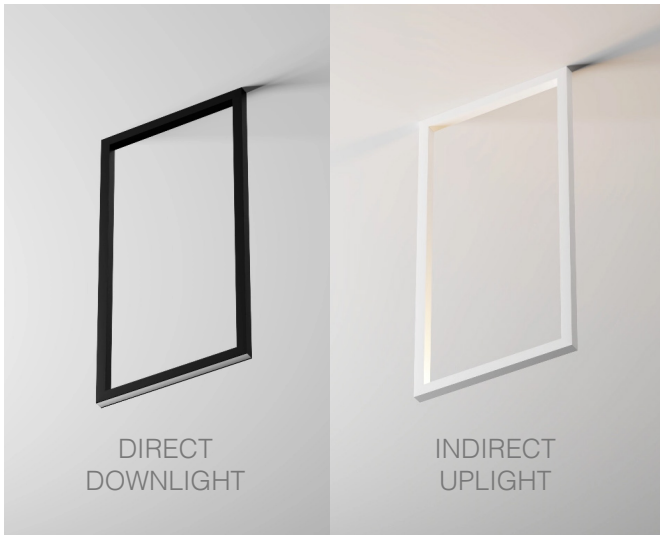


FMC™ 12X6

CEILING

TYPE:

PROJECT NAME:



FMC's concept is based on rectangles and squares. A significant advantage of the series is the wide range of available dimensions in terms of both height and profile length. This allows for the creation of striking spatial compositions, serving as a distinctive decorative element in any interior.

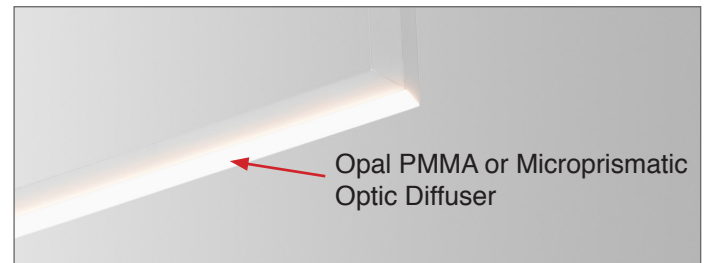
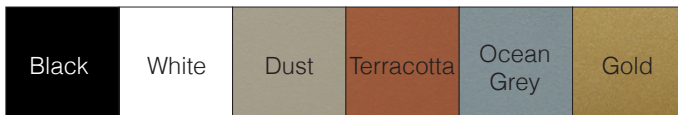
Color rendering: CRI 90

Materials: Aluminum body, polycarbonate

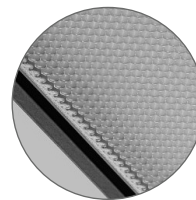
Ingress protection: IP20

Lum. flux of light source [lm]	Downlight 28W	1600 lm
	Uplight 20W	600 lm

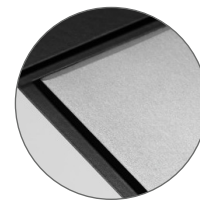
Finish options:



Optic diffuser options:



Microprismatic



Opal PMMA

SPECIFICATION SHEET

ORDERING INFO

Model (Order Code)	Structure Finishes	Optic Diffuser Options	LED	Dimming Options
<input type="radio"/> L543.1358 Direct downlight 28W	<input type="radio"/> 12: Black	<input type="radio"/> OP: Opal PMMA	<input type="radio"/> 27: 2700K	<input type="radio"/> 120V LTE Remote driver
<input type="radio"/> L543.1380 Indirect uplight 20W	<input type="radio"/> 13: White	<input type="radio"/> MP: Microprismatic (downlight version only)	<input type="radio"/> 30: 3000K	<input type="radio"/> 120V-277V 0-10V Remote driver
	<input type="radio"/> 21: Terracotta		<input type="radio"/> 40: 4000K	<input type="radio"/> 120V LTE Integral driver
	<input type="radio"/> 22: Ocean Grey			<input type="radio"/> 120V-277V 0-10V Integral driver
	<input type="radio"/> 23: Dust			
	<input type="radio"/> 80: Gold			

Installation Note: Fixture with integral driver is installed to a 4x4" backplate.

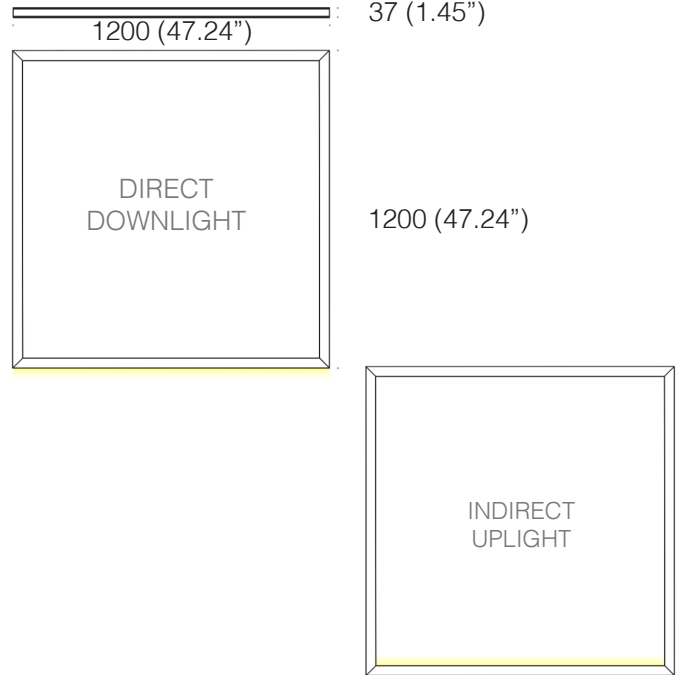
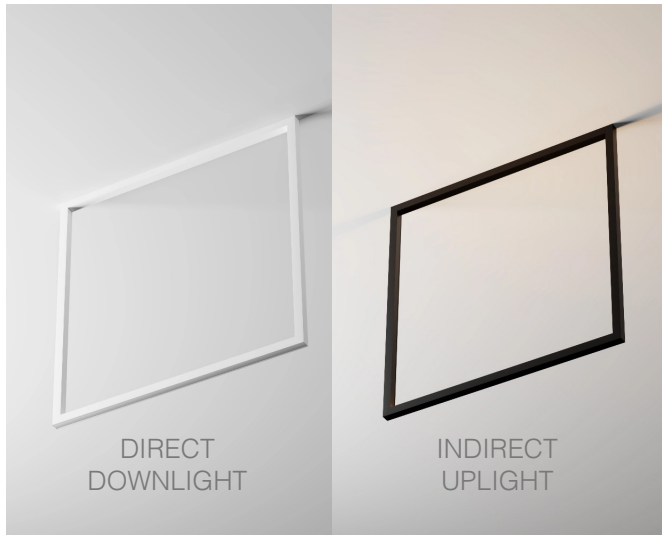


FMC™ 12X12

CEILING

TYPE:

PROJECT NAME:



FMC's concept is based on rectangles and squares. A significant advantage of the series is the wide range of available dimensions in terms of both height and profile length. This allows for the creation of striking spatial compositions, serving as a distinctive decorative element in any interior.

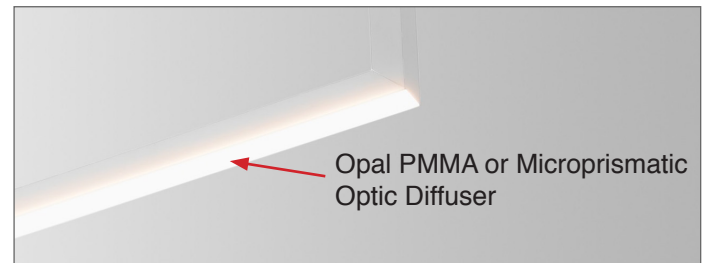
Color rendering: CRI 90

Materials: Aluminum body, polycarbonate

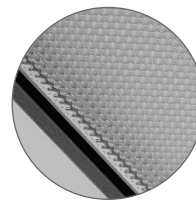
Ingress protection: IP20

Lum. flux of light source [lm]	Downlight 49W	3400 lm
	Uplight 44W	1700 lm

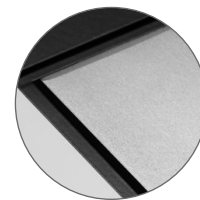
Finish options:



Optic diffuser options:



Microprismatic



Opal PMMA

SPECIFICATION SHEET

ORDERING INFO

Model (Order Code)	Structure Finishes	Optic Diffuser Options	LED	Dimming Options
<input type="radio"/> L543.1360 Direct downlight 49W	<input type="radio"/> 12: Black	<input type="radio"/> OP: Opal PMMA	<input type="radio"/> 27: 2700K	<input type="radio"/> 120V LTE Remote driver
<input type="radio"/> L543.1382 Indirect uplight 44W	<input type="radio"/> 13: White	<input type="radio"/> MP: Microprismatic (downlight version only)	<input type="radio"/> 30: 3000K	<input type="radio"/> 120V-277V 0-10V Remote driver
	<input type="radio"/> 21: Terracotta		<input type="radio"/> 40: 4000K	<input type="radio"/> 120V LTE Integral driver
	<input type="radio"/> 22: Ocean Grey			<input type="radio"/> 120V-277V 0-10V Integral driver
	<input type="radio"/> 23: Dust			
	<input type="radio"/> 80: Gold			

Installation Note: Fixture with integral driver is installed to a 4x4" backplate.



