

FRAME™ EX PLUS 2

WINDOW/ARCHWAY HIGHLIGHTER

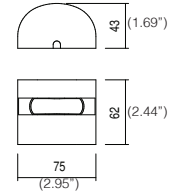
TYPE:

PROJECT NAME:

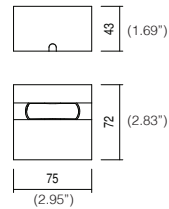
FRAME EX PLUS 2



<i>Material</i>	<i>Anticorodal aluminium body</i>	
	<i>PMMA lens</i>	
	<i>C.C.</i>	1 x 3W
<i>Abs. Power</i>	<i>24Vdc</i>	1 x 4W
	<i>Standard version</i>	C.C. Series
<i>Connection</i>		24Vdc Parallel
	<i>120 version</i>	120Vac Mains voltage
<i>Wiring</i>	<i>Provided with 2 m cable</i>	
<i>Installation</i>	<i>On ground with mounting base and set screws (included)</i>	
	3W - 700mA (Remote)	
<i>Power supply</i>	4W - 24Vdc (Remote)	
	4W - 120Vac (Integrated)	
	<ul style="list-style-type: none"> ■ .01 Anodized aluminium ■ .02 Matt white RAL9003 ■ .08 Matt black RAL9005 ■ .09 Corten ■ .17 Anthracite 	
<i>Finishing</i>		
	<ul style="list-style-type: none"> ■ 5000 K ■ Red ■ Green ■ Blue 	
<i>Also available</i>	<i>Customized cable length</i>	



FRAME EX PLUS 2 120V



SPECIFICATION SHEET



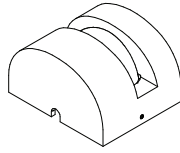
FRAME™ EX PLUS 2

WINDOW/ARCHWAY HIGHLIGHTER

TYPE:

PROJECT NAME:

FRAME EX PLUS 2



IP65



kg 0.47



	SUPPLY	W	LM	OPTICS	LED COLOR	CODE	+	FINISHING
	C.C.	3	220	3° x 115°	3000 K	L01ECA11135	.01 .02 .08 .09 .17	
	C.C.	3	240	3° x 115°	4000 K	L01ECA11145	.01 .02 .08 .09 .17	
	24Vdc	4	220	3° x 115°	3000 K	L01ECA11235	.01 .02 .08 .09 .17	
	24Vdc	4	240	3° x 115°	4000 K	L01ECA11245	.01 .02 .08 .09 .17	

POWER SUPPLIES REQUIRED:

700mA (3W) IP65 - IP67

DE70014 [14W] (1/4 Fixtures)

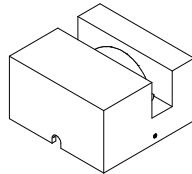
24Vdc (4W) IP67

AE24018 [18W] (1/3 Fixtures)

AE24035 [35W] (1/7 Fixtures)

AE24060 [60W] (1/12 Fixtures)

FRAME EX PLUS 2 120V



IP65



kg 0.52



	SUPPLY	W	LM	OPTICS	LED COLOR	CODE	+	FINISHING
	120Vac	4	220	3° x 115°	3000 K	L01ECA21335	.01 .02 .08 .09 .17	
	120Vac	4	240	3° x 115°	4000 K	L01ECA21345	.01 .02 .08 .09 .17	

Power supply integrated

SPECIFICATION SHEET