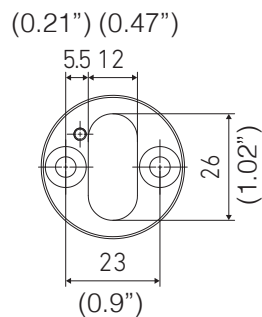
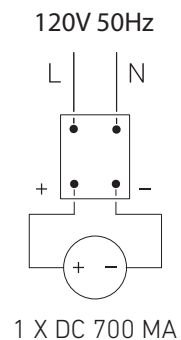


MOUNTING HOLES

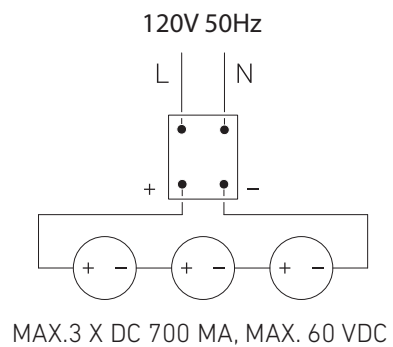


ELECTRICAL WIRING DIAGRAMS

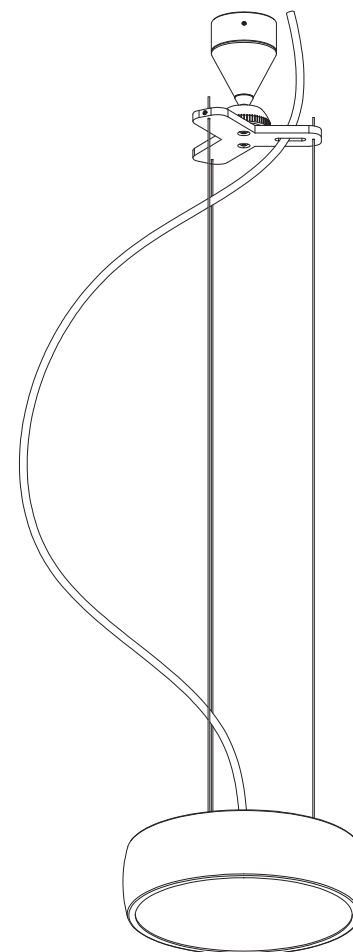
1 LIGHT SOURCE



MAX. 3 LIGHT SOURCES



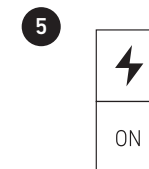
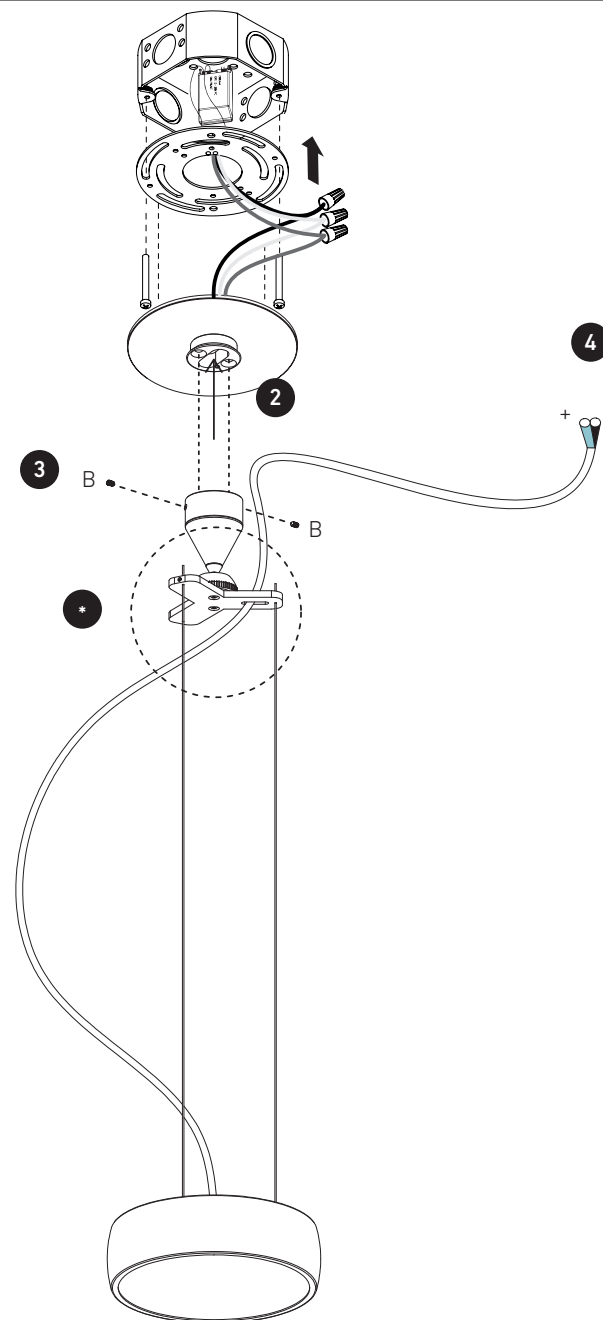
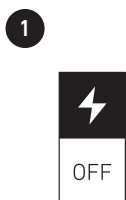
Nexus 160



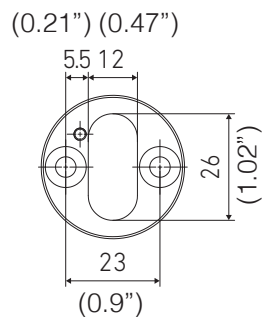
ASSEMBLY INSTRUCTIONS

1. Turn off the power.
2. Attach the mounting bracket to the ceiling junction box with screws (A).
3. Assemble the lamp with the mounting ring using the screws (B).
4. Connect to the 700mA DC power supply
5. Turn on the power

- * Using an Allen key, unscrew the grub screws that lock the steel cables (3x).
- B. Pull the steel cables out of the handle.
- C. Insert steel cables into the holes (3x).
- D. Block steel cables with clamping screws.
- E. Put the power cord in the holder.

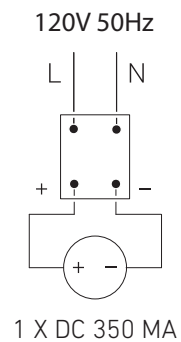


MOUNTING HOLES

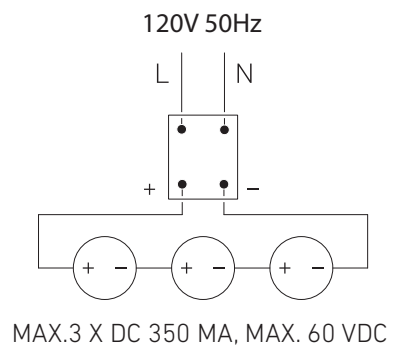


ELECTRICAL WIRING DIAGRAMS

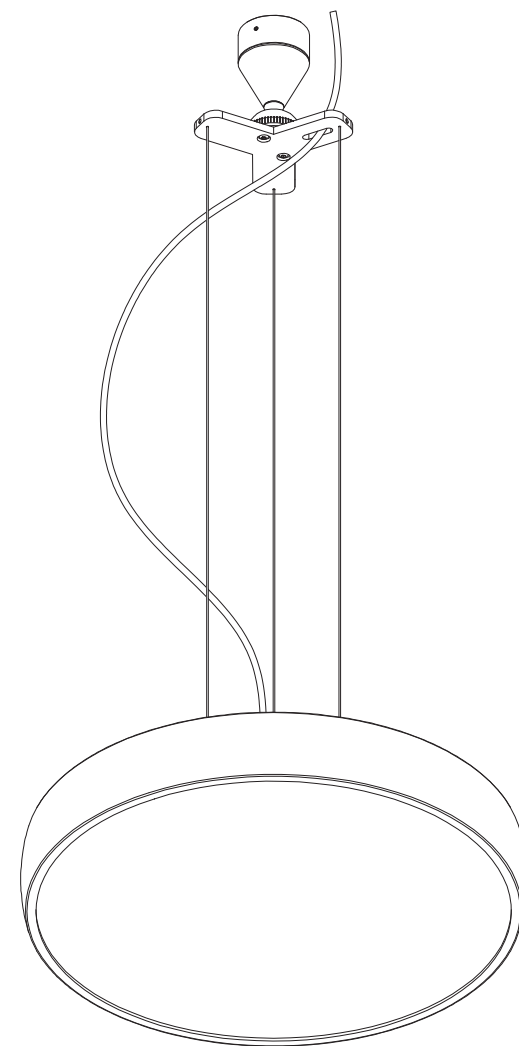
1 LIGHT SOURCE



MAX. 3 LIGHT SOURCES



Nexus 300



ASSEMBLY INSTRUCTIONS

1. Turn off the power
2. Attach the mounting bracket to the ceiling junction box with screws (A)
3. Assemble the lamp with the mounting ring using the screws (B)
4. Connect to the 350mA DC power supply
5. Turn on the power

- * Using an Allen key, unscrew the grub screws that lock the steel cables (3x).
- B. Pull the steel cables out of the handle.
- C. Insert steel cables into the holes (3x).
- D. Block steel cables with clamping screws.
- E. Put the power cord in the holder.

