

ORION™ D

POLES

TYPE:

PROJECT NAME:



SPECIFICATION SHEET

ORION™ D

POLES

TYPE:

PROJECT NAME:



Fixture Specifications

Protection . IP 65 - IK 08

Body Pole . Extruded aluminium alloy

Body/Base . Die-cast aluminium alloy

Screen . Frosted glass

Seals . Closed-cell EPDM rubber

Screws . Stainless steel A2

Paint / Finishing . Anti-corrosive UV stabilised polyester powder

Finishes



PURE WHITE
RAL 9016



BLACK
RAL 9005



WHITE
RAL 9010



BRONZE



RUST



ANTHRACITE



SLATE GREY



GREY
RAL 9006

Assembly

Ground connection system with anchoring brackets to be ordered separately. The orientation is independent of the layout of the ground fixing holes.

Application



Residential areas



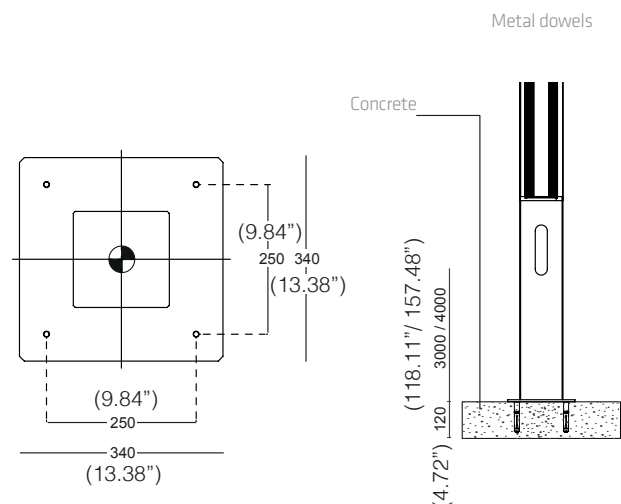
Cycle
Pedestrian paths



Access areas



Parks
Gardens





SPECIFICATION SHEET

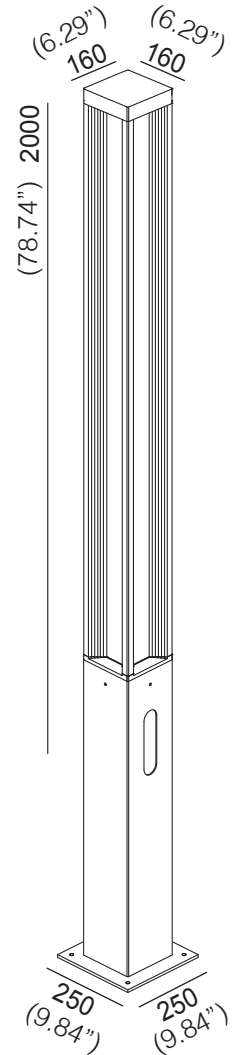
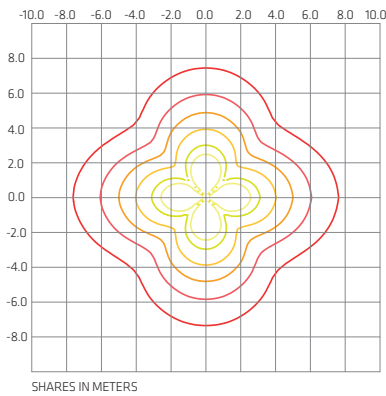
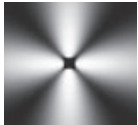
ORION™ D 3000

POLES

TYPE:

PROJECT NAME:

beam	class	W	source	fixture	CCT LED	CRI
 360°	I	35W	4720 lm	2800 lm	3000 K	80
 360°	I	35W	5000 lm	2980 lm	4000 K	80



3000 (118.11")

SPECIFICATION SHEET

ORDERING INFO

Model (Order Code)	Finish Options	Accessories	LED	Dimming Options
<input type="radio"/> L90ORION D 3000	<input type="radio"/> 00: Pure White <input type="radio"/> 10: White <input type="radio"/> 24: Bronze <input type="radio"/> 25: Rust <input type="radio"/> 01: Black <input type="radio"/> 30: Anthracite <input type="radio"/> 35: Slate Grey <input type="radio"/> 40: Grey	<input type="radio"/> G: Ground Anchoring Bracket	<input type="radio"/> 30: 3000K <input type="radio"/> 40: 4000K	<input type="radio"/> 120V LTE <input type="radio"/> 120V-277V 0-10V (Universal Voltage)





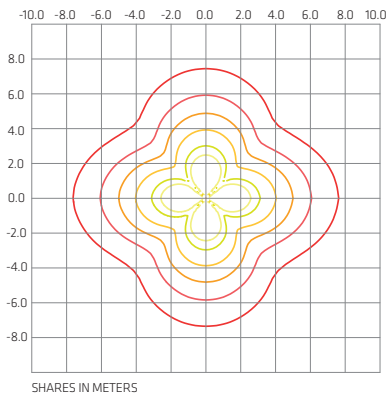
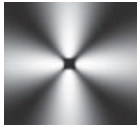
ORION™ D 4000

POLES

TYPE:

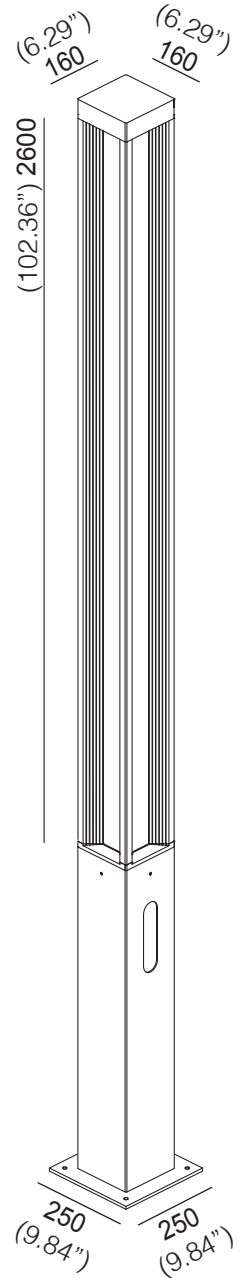
PROJECT NAME:

beam	class	W	source	fixture	CCT LED	CRI
 360°	I	35W	4720 lm	2800 lm	3000 K	80
 360°	I	35W	5000 lm	2980 lm	4000 K	80



4000K - 35W
H 3000 mm

- 60 lux
- 40 lux
- 20 lux
- 10 lux
- 5 lux
- 2 lux



4000 (157.48")

ORDERING INFO

ORION D 4000

G

Model (Order Code)

Finish Options

Accessories

LED

Dimming Options

L90ORION D 4000

- 00: Pure White
- 10: White
- 24: Bronze
- 25: Rust
- 01: Black
- 30: Anthracite
- 35: Slate Grey
- 40: Grey

G: Ground Anchoring Bracket

- 30: 3000K
- 40: 4000K

- 120V LTE
- 120V-277V 0-10V (Universal Voltage)



SPECIFICATION SHEET