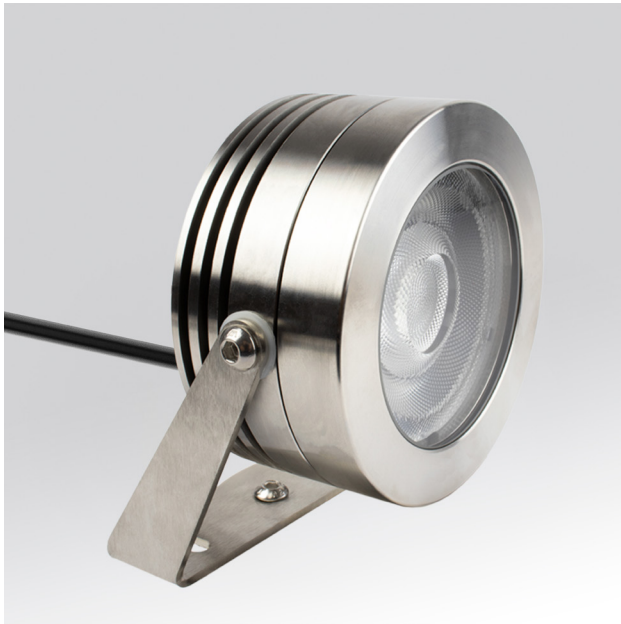


# SPOTT™ 3.1

LED SUBMERSIBLE

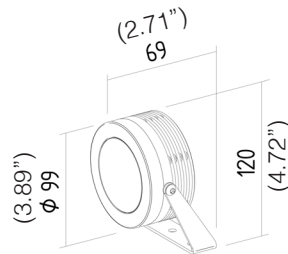
TYPE:

PROJECT NAME:



SPOTT 3.1 Dimensions

L5PW31

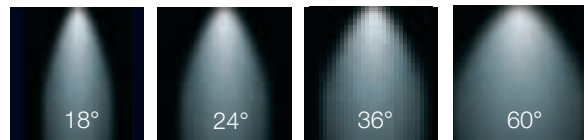


L5PW31	-	-	-	-		-
MODEL #	WATT	LED	OPTICS	FINISH	VOLTAGE	

**DESCRIPTION:**

Adjustable spotlight constructed entirely in aisi 316L stainless steel. May be installed to a depth of up to 3m (120"). Supplied with 3m (120") of neoprene wiring. This product is recommended for more unusual locations such as caves and waterfalls, when high performance is required. it produces shafts of light creating theatrical effects.

**SPOT LIGHT**



- LED COLORS**
- 2700K WHITE
  - 3000K WHITE
  - 4000K WHITE
  - 5000K WHITE
  - RGB

- FINISH**
- INOX STEEL

- WATTAGE**  12W  18W  13W RGB  19W RGB

- VOLTAGE**  120V  220V  277V

- STANDARD OPTICS**
- 18°
  - 24°
  - 36°
  - 60°

- RGBW OPTICS**
- 24°
  - 36°
  - 60°

SPECIFICATION SHEET

# SPOTT™ 3.1

LED SUBMERSIBLE

TYPE:

PROJECT NAME:

## ELECTRICAL FEATURES

POWER CONSUMPTION	<b>12W / 24W</b> RGB version: <b>12W / 24W</b>
POWER SUPPLY	<b>24Vdc</b>
POWER SUPPLY UNIT	Standard version: <b>24Vdc</b> not included RGBW version: <b>24vdc</b> with controller not included
DIMMING	Dimmable 0 -10V, LTE, RGB must use controller
CONNECTION	<b>24Vdc</b> - Parallel

## LIGHTING FEATURES

OPTICS	Standard version: <b>18°, 24°, 36°, 60°</b> RGBW version: <b>24°, 36°, 60°</b>
AVERAGE LED LIFE	<b>50.000h L80 B10</b>

## MECHANICAL FEATURES

WEIGHT	<b>kg 2,1</b>
FINISHES	Steel
INSTALLATION	Floor mounting with bracket included, on ground with peg not included, on poles/trees by mounting strap included
MATERIAL	AISI 316L stainless steel body, satinized stainless steel bracket, transparent tempered glass and PMMA lens

## GENERAL FEATURES

OPERATING TEMPERATURE	<b>-10°C +45°C</b>
INGRESS PROTECTION	<b>IP68</b>
MPACT RESISTANCE	<b>IK07</b>
GLOW WIRE TEST	<b>960°C</b>
SCREEN TEMPERATURE	<b>40° @ Ta = 25°</b>
APPLIANCE CLASS	<b>III</b>
WALKOVER	/
DRIVE OVER	/
POWER CABLES	Provided with 3m (120") cable

SPECIFICATION SHEET

# SPOTT™ 3.1

LED SUBMERSIBLE

TYPE:

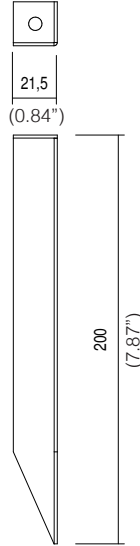
PROJECT NAME:

## ACCESSORIES

CODE **PI002**

TPOLOGY **Peg**  kg 0,10

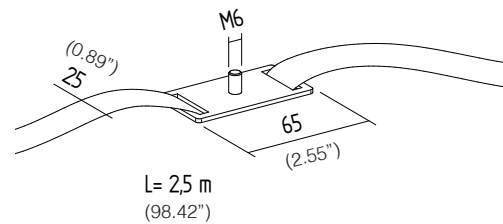
MATERIAL AISI 304 Stainless steel (3.89")



CODE **CIN20**

TPOLOGY **Mounting Strap**  kg 0,11

MATERIAL Polyester tape, zinc plated steel buckle, AISI 304 base



SPECIFICATION SHEET