

KYKLO™

STEPLIGHT

TYPE:

PROJECT NAME:



Minimum thickness

The minimum thickness of the lamp is designed for 120-277V surface installation.



SPECIFICATION SHEET

KYKLO™

STEPLIGHT

TYPE:

PROJECT NAME:



Outdoor lighting fixture for wall installation. The circle represents the compositional union of the KYKLO series, in which the different versions find in this pure form the space of the light source, in its possible expressions, underlined by the accurate finishing of the flush glass diffuser.

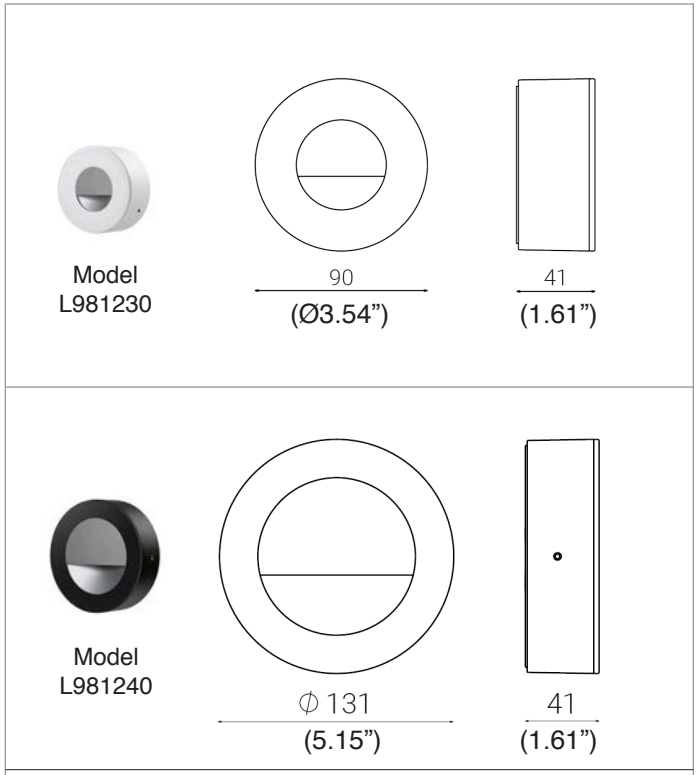
Power input: 4W / 8W

Light emission direction: Direct

Materials: Aluminum structure, transparent ultrawhite tempered front glass

Electrical: High efficiency electronic power supply, rated 50,000 hours 120V-277V

Dimming: Power supply compatible with 0-10V or LTE dimming



Structure finish: Anthracite, White



Light source: LED

2700K: 80CRI

3000K: 80CRI

4000K: 80CRI

Optics:

asym

Source lumens: 4W: 50 lm / 8W: 100 lm

SPECIFICATION SHEET

ORDERING INFO

Model (Order Code)	Structure Finish	Backbox Options*	LED	Dimming Options
<input type="radio"/> L981230 4W	<input type="radio"/> AN: Anthracite	<input type="radio"/> L981239: for 4W	<input type="radio"/> 2700K	<input type="radio"/> 120V LTE
<input type="radio"/> L981240 8W	<input type="radio"/> W: White	<input type="radio"/> L981249: for 8W	<input type="radio"/> 3000K	<input type="radio"/> 120V 0-10V
			<input type="radio"/> 4000K	<input type="radio"/> 277V 0-10V

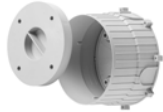


*See details on next page.

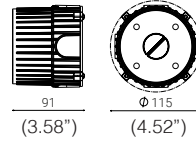
BACKBOXES



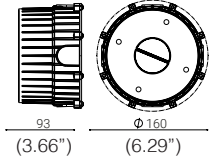
code L981239



code L981249



code L981239



code L981249

Code	Description	Ref. to
L981239	Back box for wall flush installation, complete with cover	L981230
L981249		L981240