

FRAME™ V2 RGB

WINDOW/ARCHWAY HIGHLIGHTER

TYPE:

PROJECT NAME:

ELECTRICAL FEATURES

POWER CONSUMPTION	4W - 8W
POWER SUPPLY	C.C.
POWER SUPPLY UNIT	4W - 350mA 8W - 700mA
CONNECTION	Series

LIGHTING FEATURES

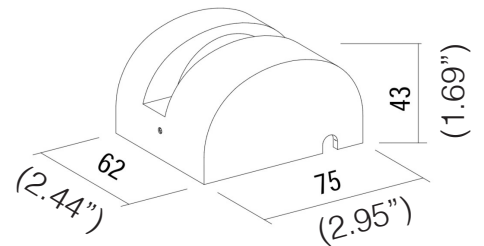
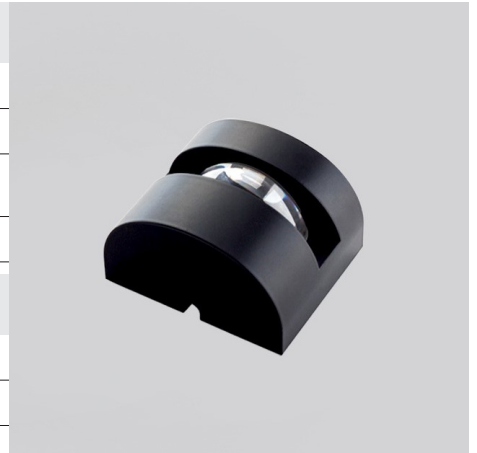
LED COLOUR	RGBW
OPTICS	3° x 180°
AVERAGE LED LIFE	50.000h L80 B10

MECHANICAL FEATURES

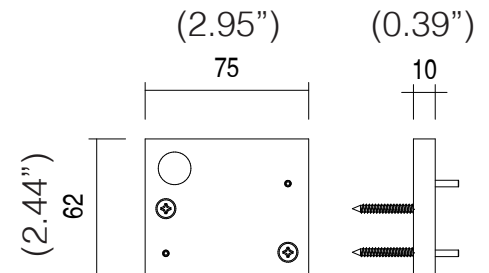
WEIGHT	Kg 0,47
FINISHES	White, Grey, Black, Corten Anthracite, Sand
INSTALLATION	Surface mounted with fixing base (included) and screws (not included)
MATERIAL	Anticorodal aluminum body, PMMA lens

GENERAL FEATURES

OPERATING TEMPERATURE	-10°C +45°C
INGRESS PROTECTION	IP65
IMPACT RESISTANCE	IK08
GLOW WIRE TEST	960°C.
APPLIANCE CLASS	II



Base Dimension:



ORDERING INFO

Model (Order Code)	Finish Options	Optic Options	LED	Dimming Options
<input type="radio"/> FRAME V2 RGB 4W	<input type="radio"/> 01: White	<input type="radio"/> 318: 3° x 180°	<input type="radio"/> RGB: RGB	<input type="radio"/> 120V LTE
<input type="radio"/> FRAME V2 RGB 8W	<input type="radio"/> 02: Grey			<input type="radio"/> 120-277V 0-10V (Remote Driver)
	<input type="radio"/> 03: Black			
	<input type="radio"/> 04: Corten Anthracite			
	<input type="radio"/> 05: Sand			

SPECIFICATION SHEET

