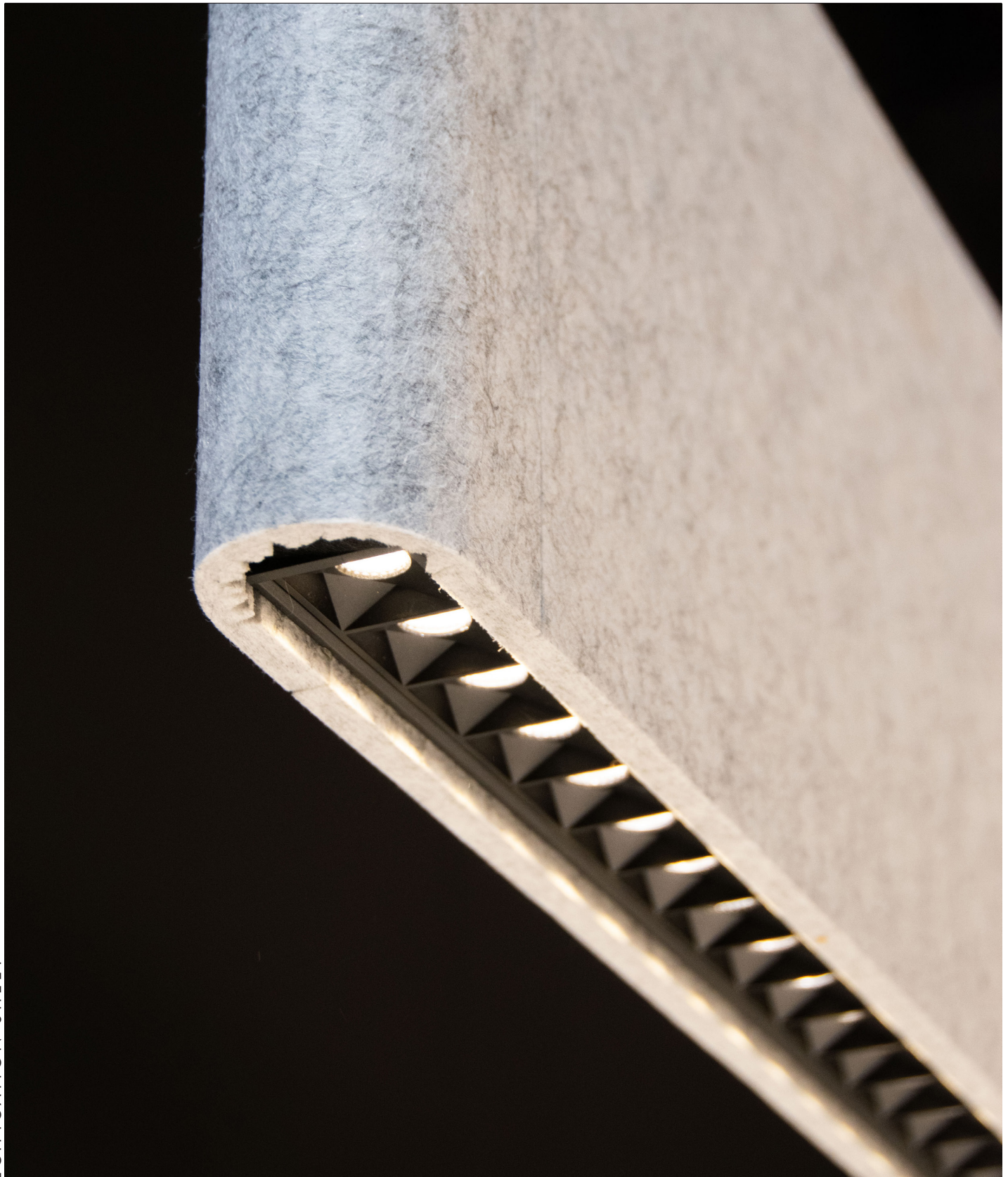


LINE™
SUSPENSION

TYPE:

PROJECT NAME:



SPECIFICATION SHEET

LINE™ M1290

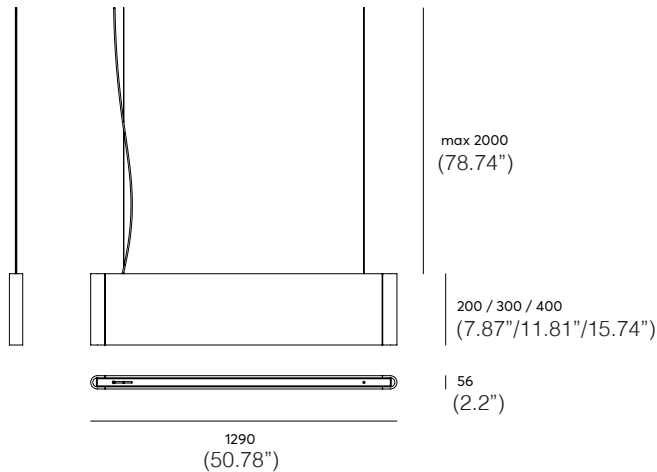
SUSPENSION

TYPE:

PROJECT NAME:



Measurements:



Material:

PET Felt (polyethylene terephthalate)

Fixture:

2m (78.74") black cable
 2 black metal wires with adjustable griplock
 Black ceiling cap and black PET Felt interior (standard)

Acoustic properties:



High absorption value of aw 1.0

Total weight gross | net: 4,9kg | 4,1kg (300mm)

SPECIFICATION SHEET

ORDERING INFO

LINE M1290	-	-	-	-
Model (Order Code)	Acoustic Finish Options	Optic Options	LED	Dimming Options
<input type="radio"/> LINE M1290	<input type="radio"/> See Acoustic Finish Options on Next Page	<input type="radio"/> Cubic Reflector <input type="radio"/> Prismatic Diffuser	<input type="radio"/> 30: 3000K <input type="radio"/> 40: 4000K	<input type="radio"/> 120V LTE <input type="radio"/> 120V-277V 0-10V (Universal Voltage)



LINE™ M1290

SUSPENSION

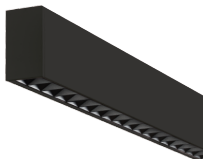
TYPE:

PROJECT NAME:

Colors:

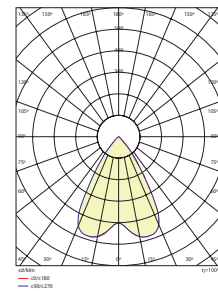


Light source specifications:
Cubic reflector

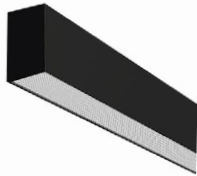


LED power: 17W
Luminous Flux: 2070lm
Frequency: 47-63Hz
Power factor: 122lm/W
Optics: Cubic Optic Noir
CRI: Ra>80
UGR: <10
Operating temperature: -20 ~ +45

Photometrics:
Lumen intensity distribution

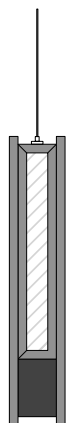





Prismatic diffuser



LED power: 15W
Luminous Flux: 1810lm
Frequency: 47-63Hz
Power factor: 122lm/W
Optics: Prismatic difuser
CRI: Ra>80
UGR: <19
Operating temperature: -20 ~ +45

Acoustic specifications:

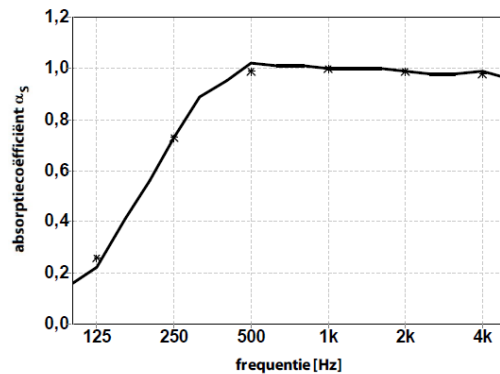


-  Acoustic PET Felt
-  Air
-  LED Element

The product is designed with the Sandwich Sound absorbing PET Felt principle. 2x 18mm of PET Felt with a 20mm of Air cavity. Due to the layered effect, the sound-waves are optimally absorbed by the design.

The LED element will reflect the soundwaves

Measurement of sound absorption in a reverberation room
According to ISO 354:2003



aw (ISO 11654) = 1,00

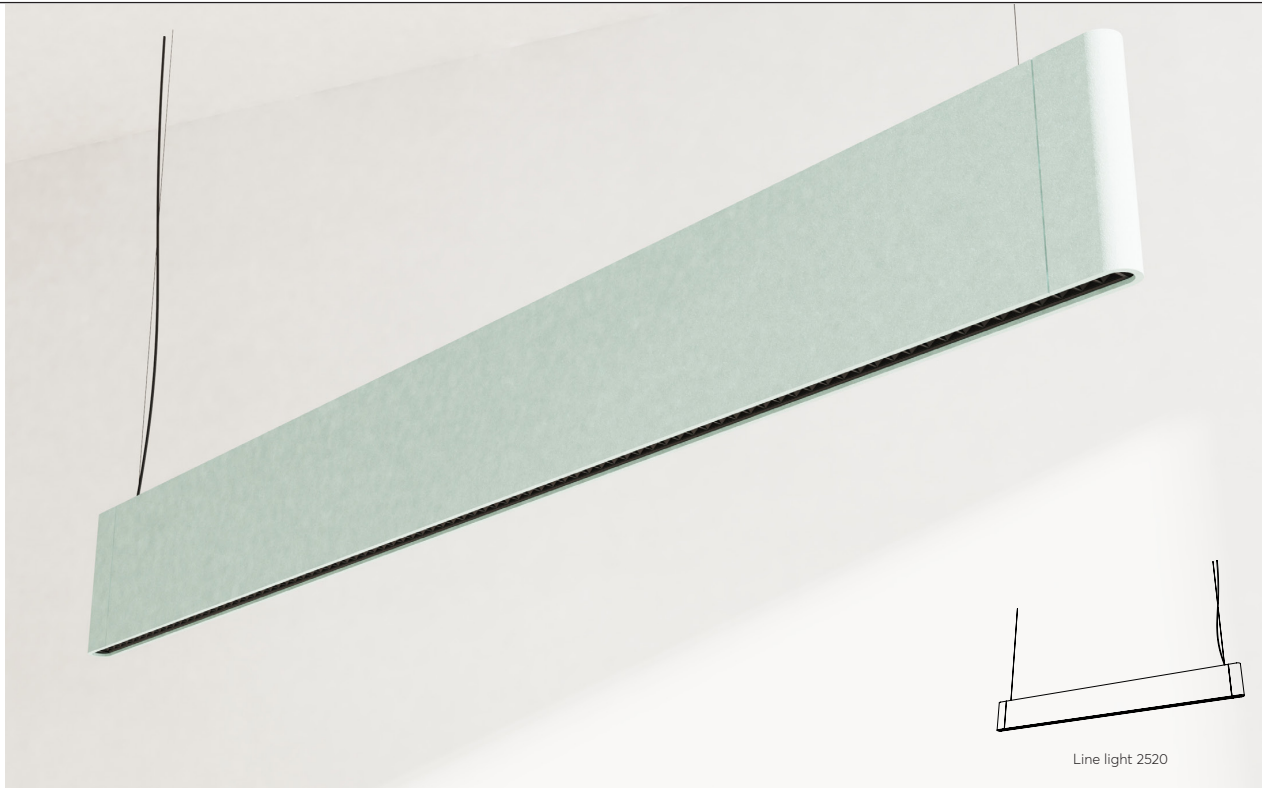
SAA (ASTM - C423) = 0,93

LINE™ L2520

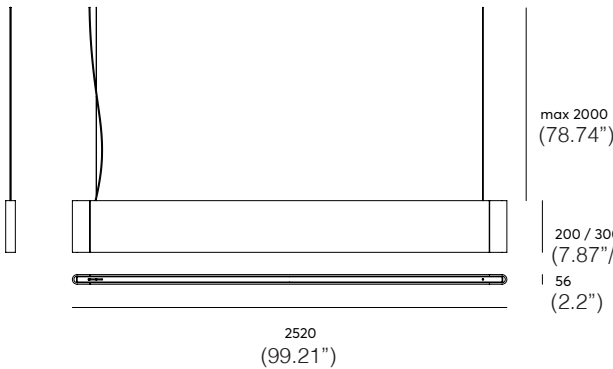
SUSPENSION

TYPE:

PROJECT NAME:



Measurements:




Material:

PET Felt (polyethylene terephthalate)

Fixture:

2m (78.74") black cable
2 black metal wires with adjustable griplock
Black ceiling cap and black PET Felt interior (standard)

Acoustic properties:

 High absorption value of aw 1.0

Total weight gross | net: 9,8kg | 9kg (300mm)

SPECIFICATION SHEET

ORDERING INFO

LINE L2520	-	-	-	-
Model (Order Code)	Acoustic Finish Options	Optic Options	LED	Dimming Options
<input type="radio"/> LINE L2520	<input type="radio"/> See Acoustic Finish Options on Next Page	<input type="radio"/> Cubic Reflector <input type="radio"/> Prismatic Diffuser	<input type="radio"/> 30: 3000K <input type="radio"/> 40: 4000K	<input type="radio"/> 120V LTE <input type="radio"/> 120V-277V 0-10V (Universal Voltage)



LINE™ L2520

SUSPENSION

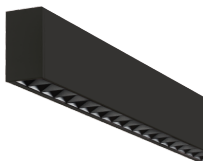
TYPE:

PROJECT NAME:

Colors:

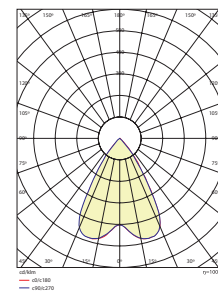


Light source specifications:
Cubic reflector

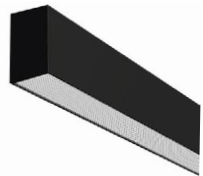


LED power: 34W
 Luminous Flux: 4140lm
 Frequency: 47-63Hz
 Power factor: 122lm/W
 Optics: Cubic Optic
 CRI: Ra>80
 UGR: <10
 Operating temperature: -20 ~ +45

Photometrics:
Lumen intensity distribution

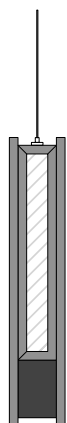


Prismatic diffuser



LED power: 30W
 Luminous Flux: 3620lm
 Frequency: 47-63Hz
 Power factor: 122lm/W
 Optics: Prismatic difuser
 CRI: Ra>80
 UGR: <19
 Operating temperature: -20 ~ +45

Acoustic specifications:

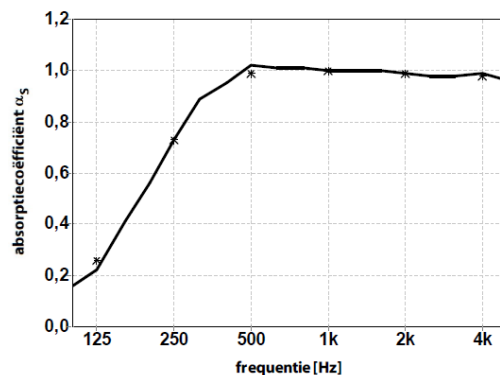


- Acoustic PET Felt
- Air
- LED Element

The product is designd with the Sandwich Sound absorbing PET Felt principle. 2x 18mm of PET Felt with a 20mm of Air cavity. Due to the layered effect, the sound-waves are optimally absorbed by the design.

The LED element will reflect the soundwaves

Measurement of sound absorption in a reverberation room
 According to ISO 354:2003



	0,16	0,56	0,95	1,01	1,00	0,98
1/3 oct.	0,22	0,73	1,02	1,00	0,99	0,99
	0,41	0,89	1,01	1,00	0,98	0,96
1/1 oct.	0,26	0,73	0,99	1,00	0,99	0,98

aw (ISO 11654) = 1,00

SAA (ASTM - C423) = 0,93

SPECIFICATION SHEET