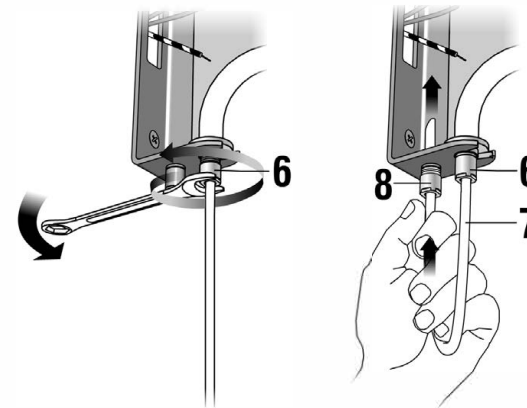
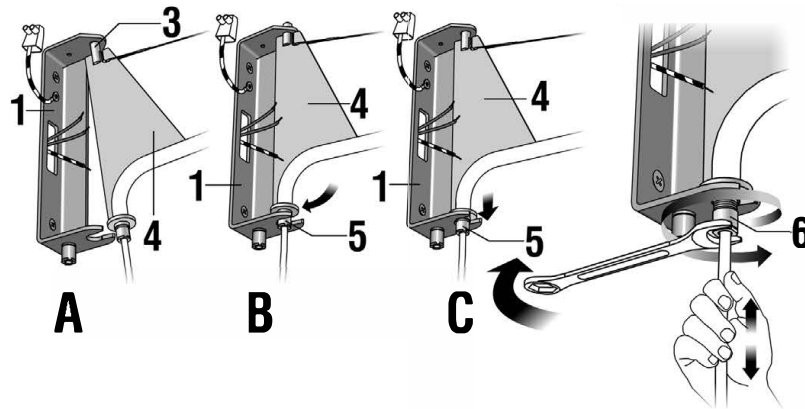
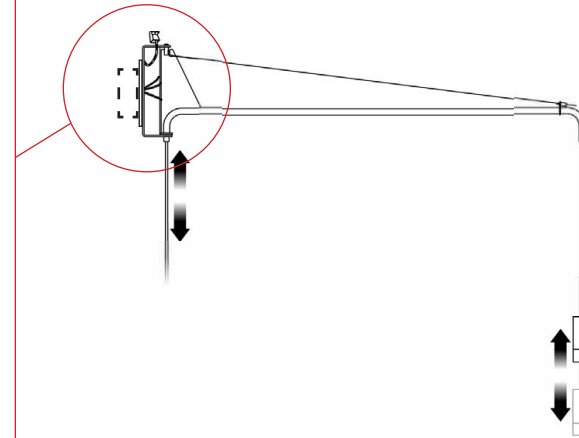
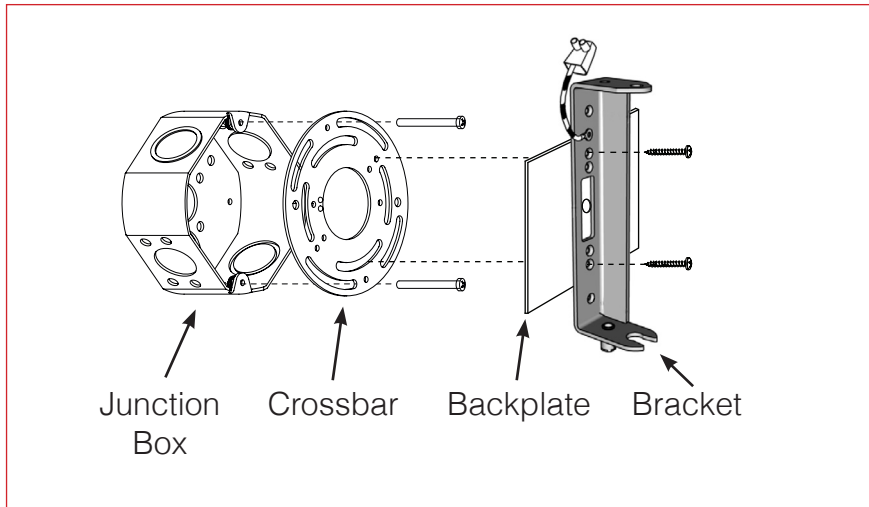


POP HOST M™

WALL

TYPE:

PROJECT NAME:



- Fix the crossbar to the junction box. Screw the bracket with backplate to the crossbar.
- Pull the wires through the holes.
- To put arm (4) in the bracket (1), put element (3) of arm (4) inside the upper hole of bracket (1) PHASE A. Then put element (5) of arm (4) in the interior hole of bracket (1) PHASE B and C.

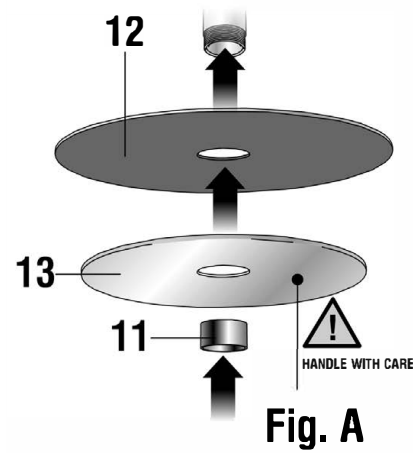
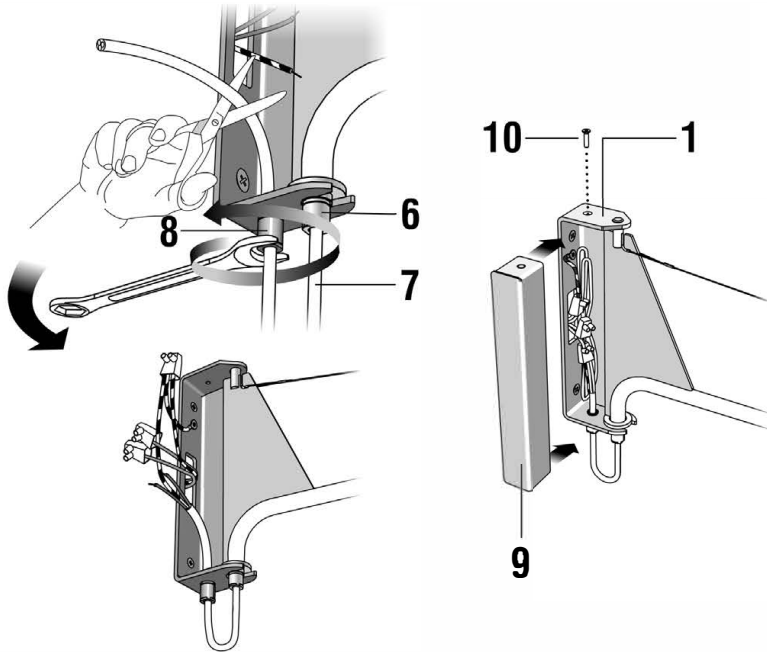
- Gently unscrew clump body (6) and, holding the wire (7), adjust the position (length) of the lamp holder, then completely close clump body (6).

POP HOST M™

WALL

TYPE:

PROJECT NAME:



- Unscrew clump body (8), then put wire (7) coming out from clump body (6) to make the connection to net wires and to wire block of the ground cable.
- Once made the connections, close bracket (1) with cover element (9) screwing screw (10) on the top.

- Unscrew ring nut (11) from the lamp holder. Put in the lamp holder the brass diffuser (13) and plate (12) and fix it screwing again and completely ring nut (11), Fig A.
- Screw the lightbulb (14).