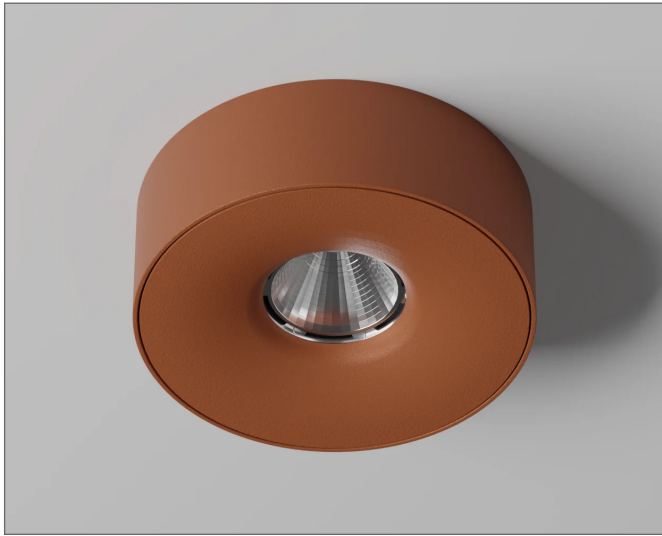


**TYPE:**

**PROJECT NAME:**



**Finish options:**

Black, White, Dust, Terracotta, Ocean Grey, Gold



**Input [W]** 20W

**Lum. flux of light source [lm]** 45° 832 lm

Ono + is a minimalist and modern version of the Ono luminaire, characterized by a low body height of only 37 mm. Its distinctive feature is the absence of visible screws, giving it an elegant appearance. Thanks to its reduced height, it is perfect for interiors where subtlety and discreet lighting are essential. Easy installation makes Ono + a user-friendly solution for those who appreciate simplicity and functionality. This luminaire is an excellent addition to modern interior designs, providing efficient lighting at the same time.

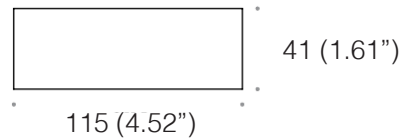
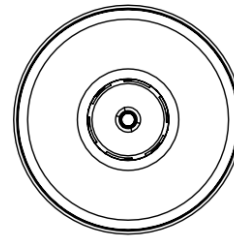
**Color rendering:** CRI 90

**Materials:** Aluminum

**Ingress protection:** IP20

**Electrical:** High efficiency electronic power supply, rated 50,000 hours 120V-277V

**Installation Note:** Install on a standard 4" Octagonal junction box.



SPECIFICATION SHEET

**ORDERING INFO**

L543.4222

Model (Order Code)	Structure Finishes	Optic Options	LED	Dimming Options
<input type="radio"/> L543.4222 10W	<input type="radio"/> 12: Black <input type="radio"/> 13: White <input type="radio"/> 21: Terracotta <input type="radio"/> 22: Ocean Grey <input type="radio"/> 23: Dust <input type="radio"/> 80: Gold	<input type="radio"/> 29: 29° <input type="radio"/> 42: 42°	<input type="radio"/> 30: 3000K <input type="radio"/> 40: 4000K	<input type="radio"/> 120V LTE <input type="radio"/> 120V-277V 0-10V



**ONO+™**

CEILING

**TYPE:**

**PROJECT NAME:**



SPECIFICATION SHEET

**Luminart®**

WWW.LUMINARTLIGHTING.COM  
Last updated: 12/17/24