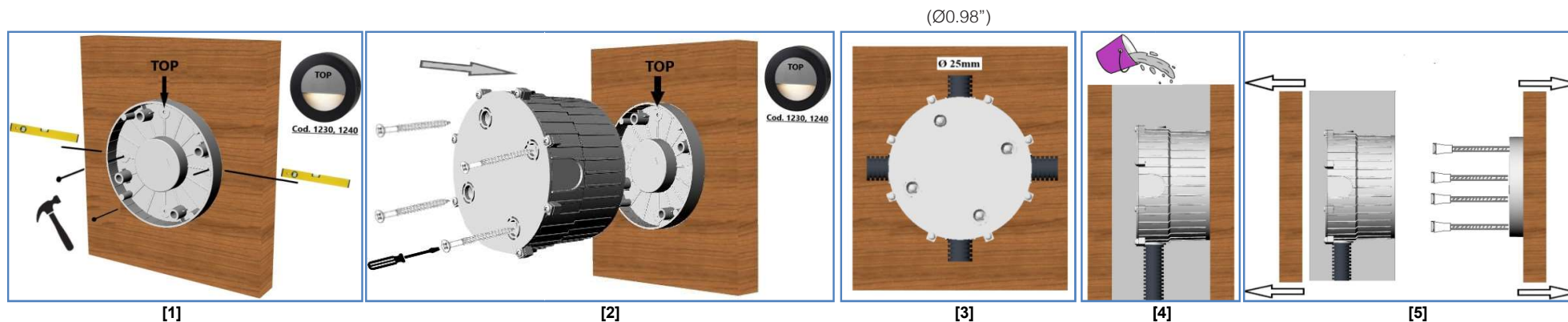


INSTALLATION OF CONCRETE BACK BOX



INSTALLATION

Secure the base with nails or screws. [11]

Code 1230, 1240: pay attention to the base orientation, the fixing points on the wood must be orthogonal.

Fix the backbox to the base using screws at least 110mm (4.33") long [2]

Open the cable passages where necessary. [3]

Wall the backbox, aligning the edge with the wall, taking into account any plaster. [4]

Remove the wooden parts. [5]

For wiring, refer to the instructions included with the KYKLO appliance.

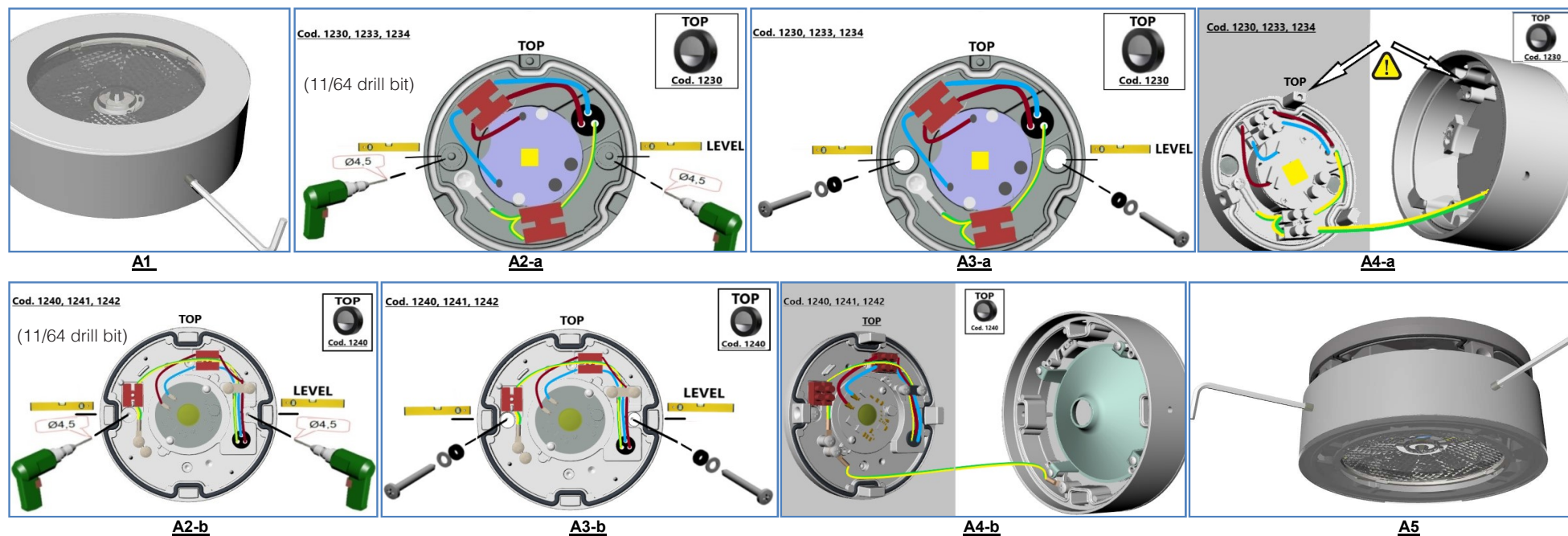
An accessory bag containing 4 clips for fixing the KYKLO luminaire and a suction cup for its extraction is supplied together with the formwork.

Keep the accessories bag.

Keep these instructions.

INSTALLATION OPTIONS

A - Directly on the wall/ ceiling
B - Recessed, using the backbox cod. 1239 or 1249.



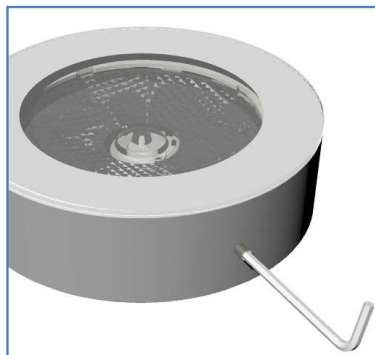
A1: Open the fixture

A2: Drill the base at the specified points and make the electrical connections

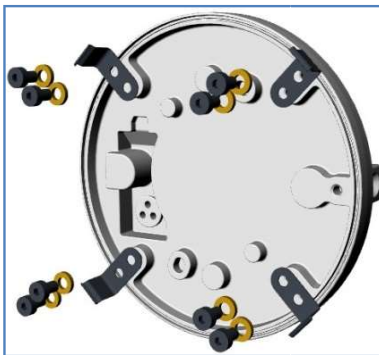
A3: Drill the surface and secure the base with the supplied screws. **Cod. 1230, 1240:** pay attention to the orientation of the eyelid

A5: Close the fixture

INSTALLATION OF BACK BOX FRICTION CLIPS



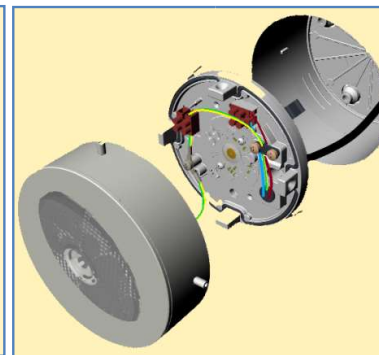
B1



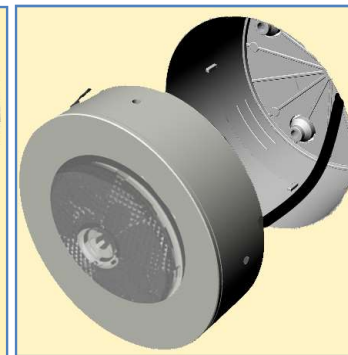
B2



B3



B4



B5

B1: Open the fixture

B2: Fasten the supplied clips to the back of the base

B3: Make the electrical connections

B4: Connect the frame ground wire to the base

B5: Close the fixture and insert it into the backbox