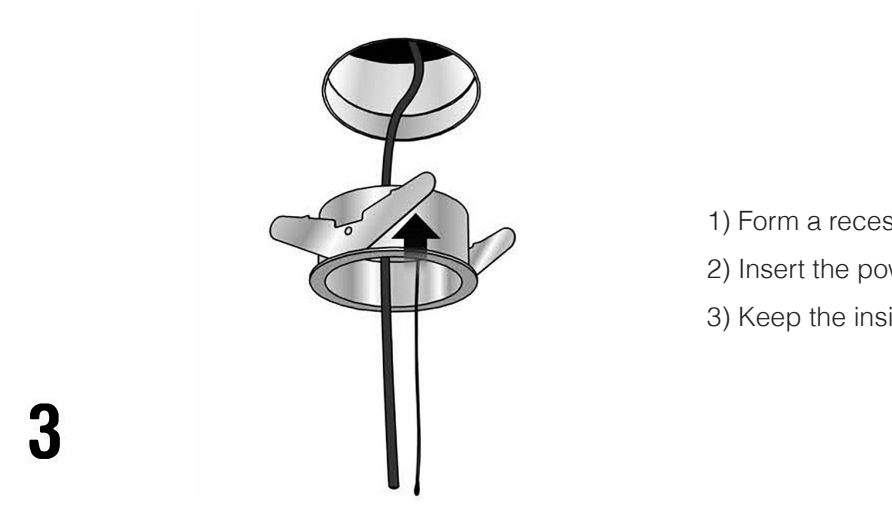
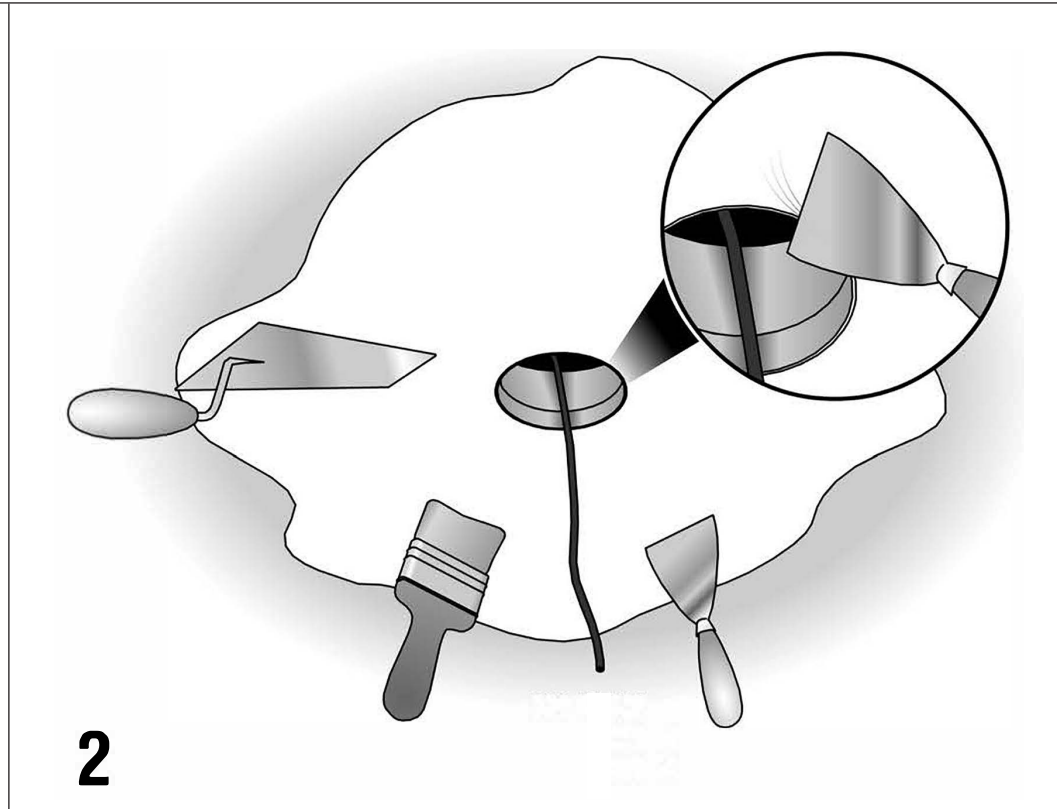
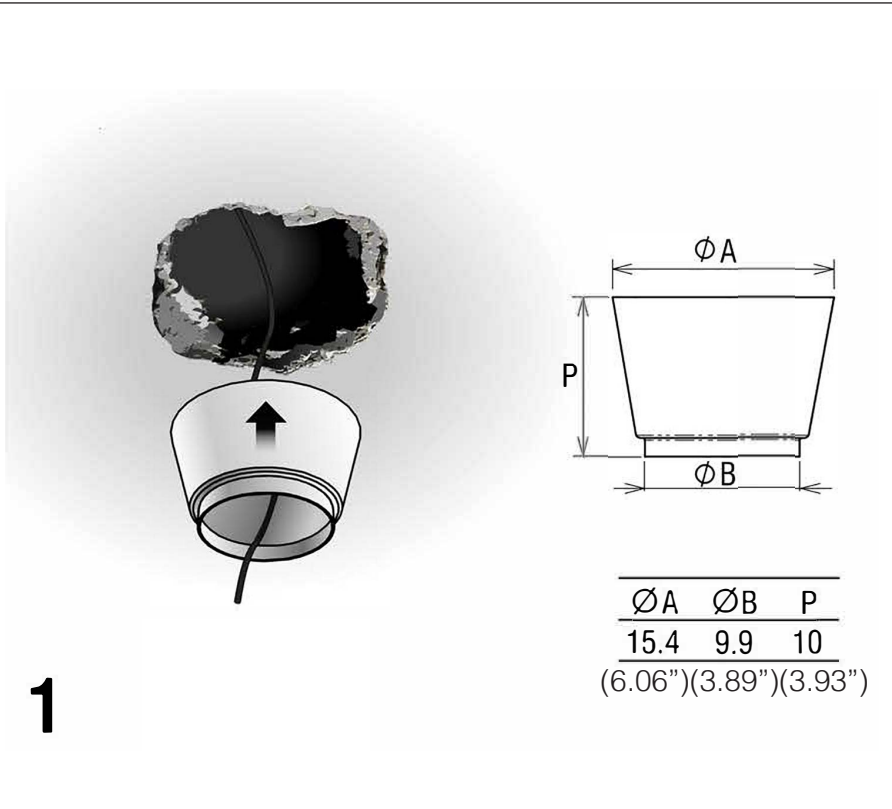


POP™ 04 Ø08

RECESSED

TYPE:

PROJECT NAME:



- 1) Form a recess in the ceiling for the brickwork housing.
- 2) Insert the power cables in to the brickwork housing and complete the ceiling with plaster finish.
- 3) Keep the inside brickwork housing clean. Install the item into the housing.

INSTALLATION SHEET

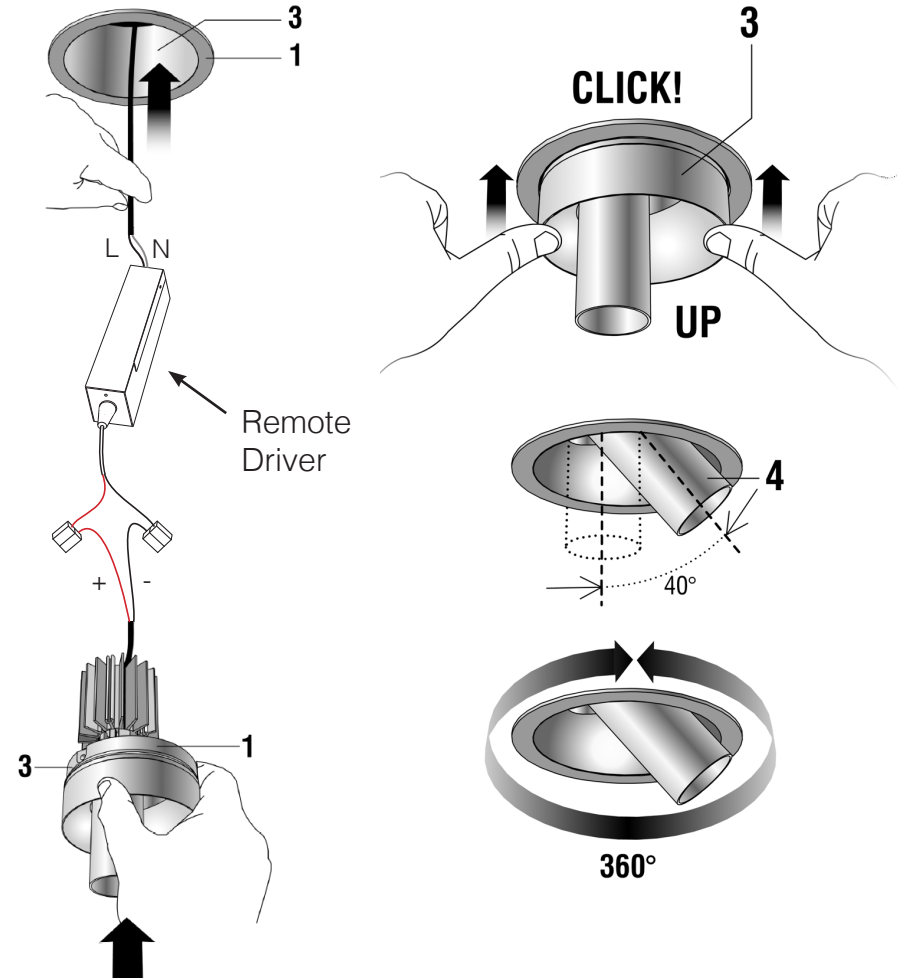
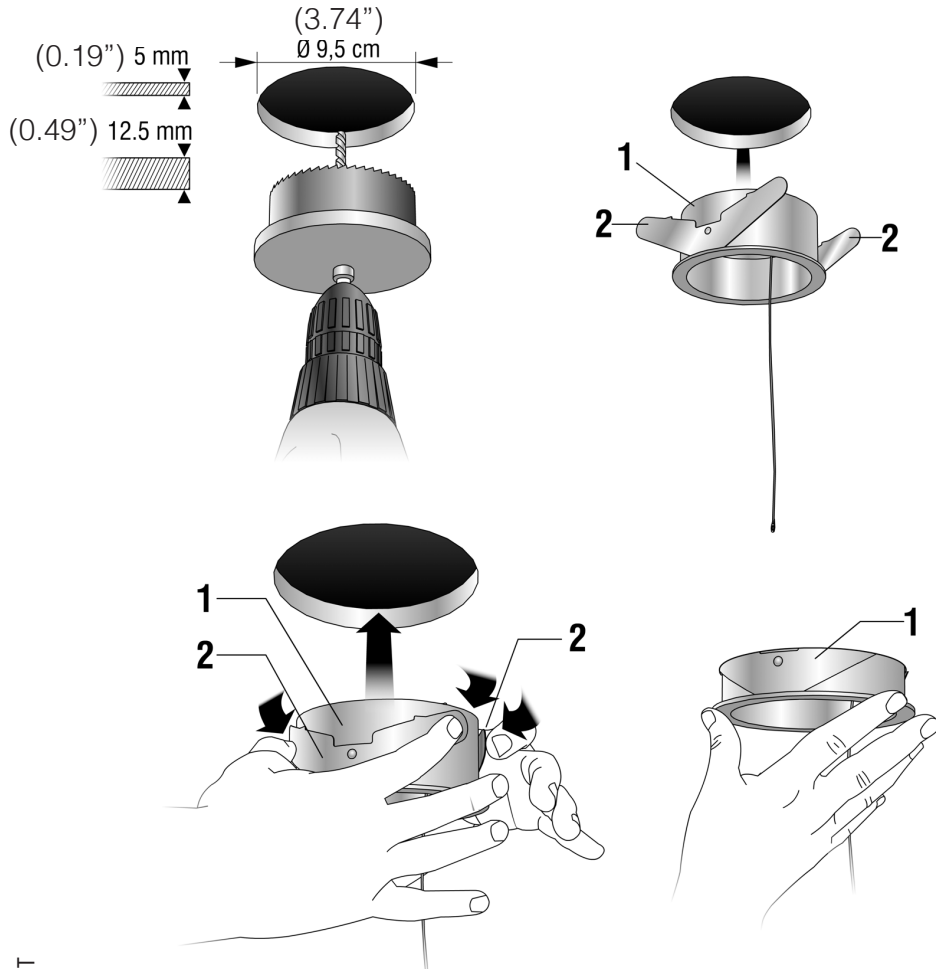
3

POP™ 04 Ø08

RECESSED

TYPE:

PROJECT NAME:



INSTALLATION SHEET

- Drill the ceiling with a cutter corresponding to the diameter 9.5 cm (3.74").
- Bend the springs (2) from the housing (1) to put it into the hole with a counterclockwise rotation.
- Make the connection to the remote driver.

- Put element (3) into the housing (1) already installed in the ceiling.
- Press on the border of element (3) until the click coupling.
- Finally adjust element (1) and the tube (4) as needed.