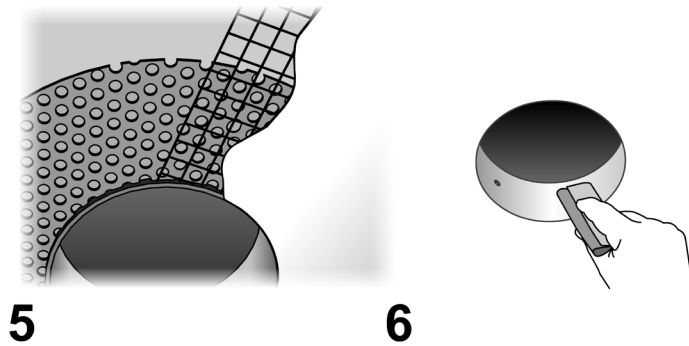
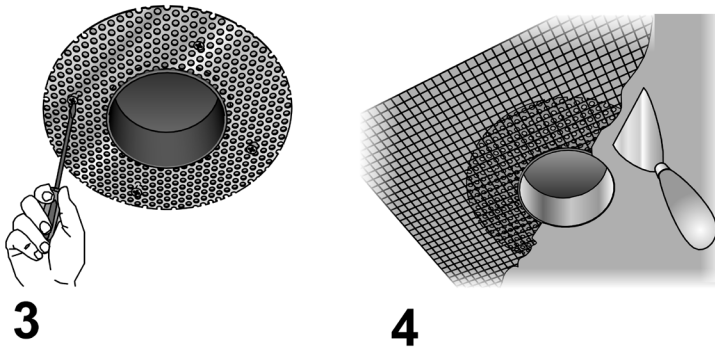
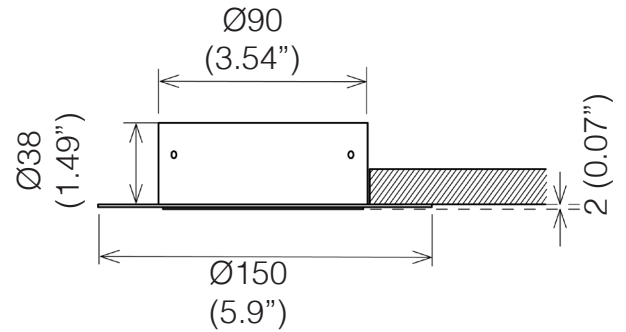
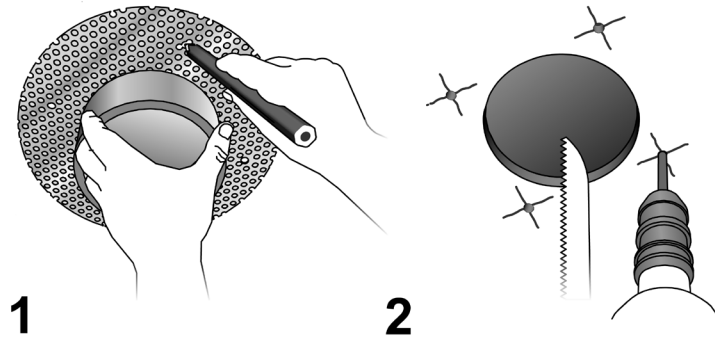


# POP™ 12 Ø 03

INSTALLATION INSTRUCTIONS

TYPE:

PROJECT NAME:



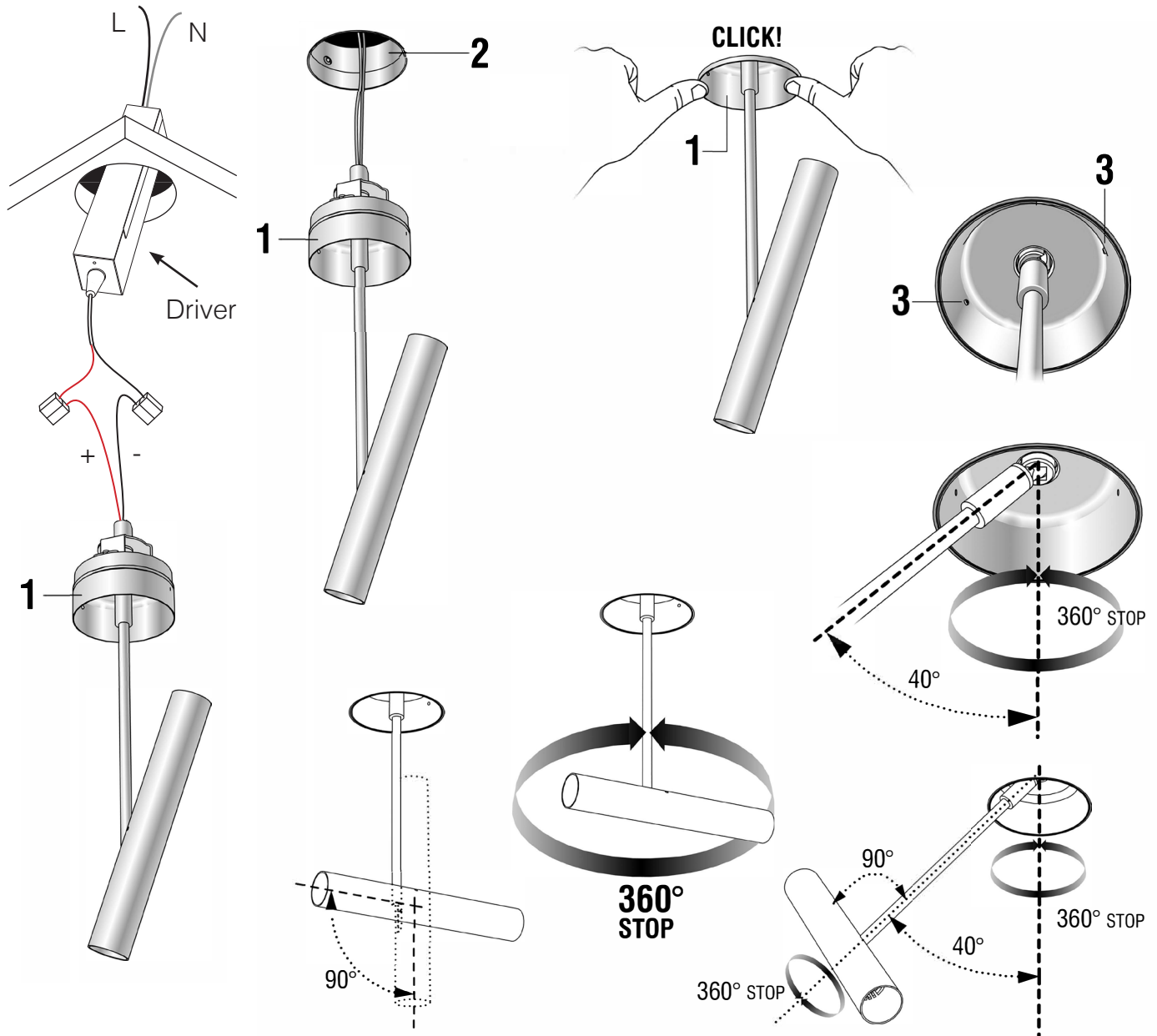
- INSTALLATION SHEET
- Once pointed the position of the lamp, mark the fixing holes for the housing.
  - Make the hole for the housing and the holes for the fixing rawlplugs.
  - Fix the screws of the housing to the ceiling plaster board.
  - Apply the proper grasping net.
  - Plaster and trim the compensating 2mm (0.07") gap.
  - Keep clean the inside of the housing.

# POP™ 12 Ø 03

## INSTALLATION INSTRUCTIONS

TYPE:

PROJECT NAME:



INSTALLATION SHEET

- Make the connections to the driver with connectors.
- Insert the lamp (1) in the housing beforehand built into the ceiling (2).
- Fasten the safety screws (3) with the given key.
- Adjust the lamp, tilting and rotating it, as required.

**Luminart®**

WWW.LUMINARTLIGHTING.COM  
Last updated: 10/16/24