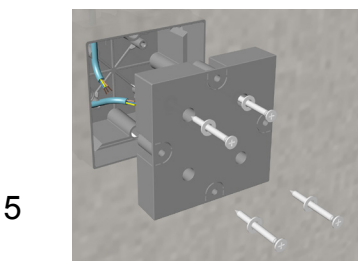
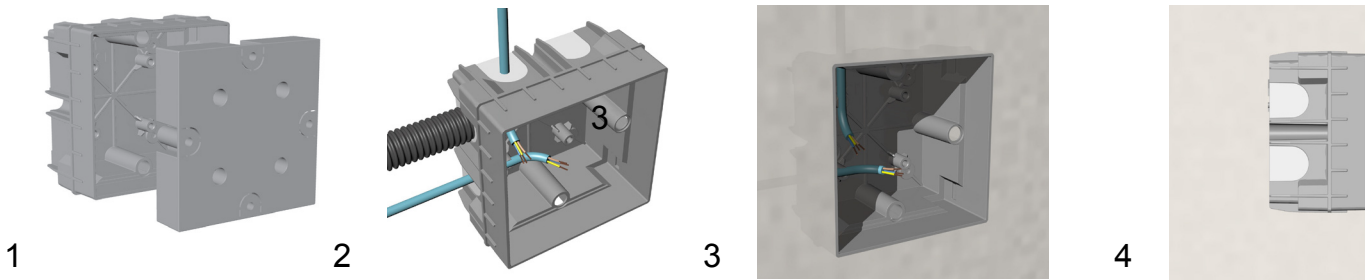


INSTALLATION FLUSH MOUNT RECESSED WITH BACK BOX - REMOTE DRIVER



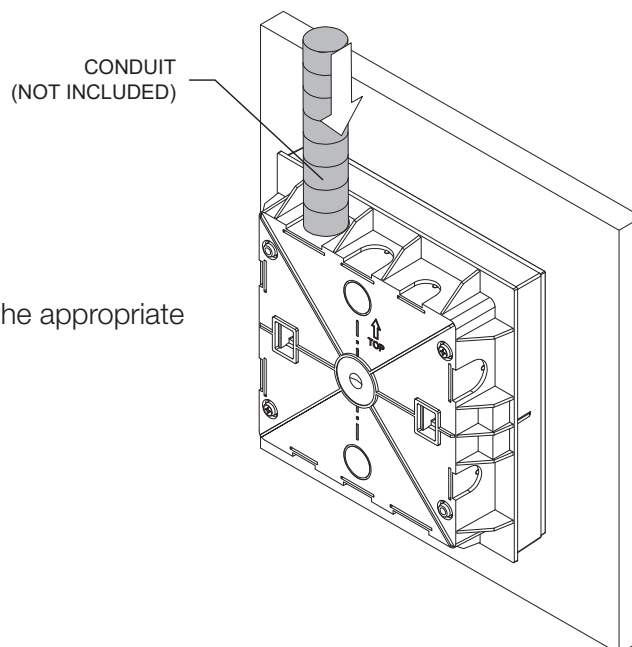
A

With the backbox they are supplied in a bag (S):
 -2 fixing clips for the fixture that must be kept in a safe place and used for its installation.

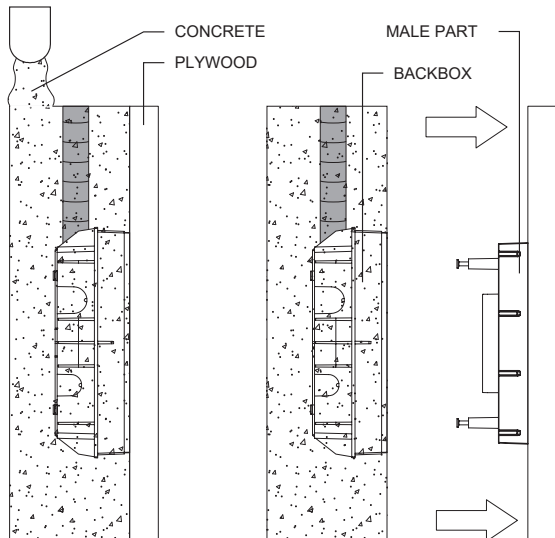
- Remove the cover. [1]
- Open the cable passages where necessary. [2]
- Imbed the backbox, aligning the edge with the wall taking into account any plaster. [3 – 4]
- Screw the cover to protect the interior from mortar or cement, until the moment of installing the fixture, using the screws supplied. [5]

B

Insert a conduit (not included) in the appropriate knock out.

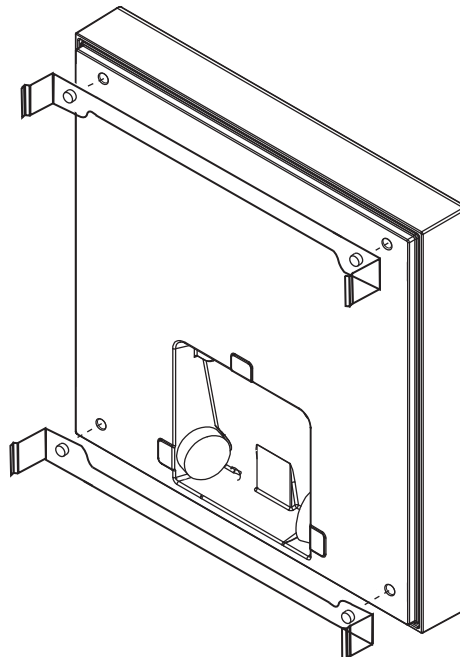


INSTALLATION FLUSH MOUNT RECESSED WITH BACK BOX - REMOTE DRIVER



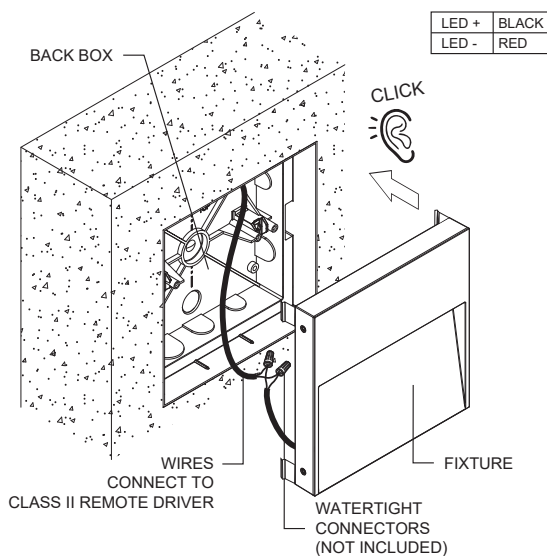
C

Pour concrete in the formwork where the back box is placed. Wait for the concrete to dry. When removing the formwork, pull the male part off of the back box.



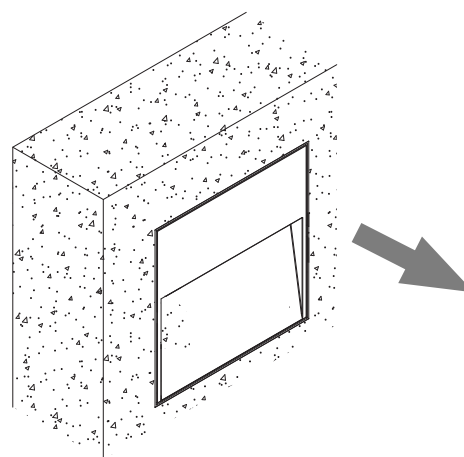
D

Install 2 x bracketS (included) to the fixture.



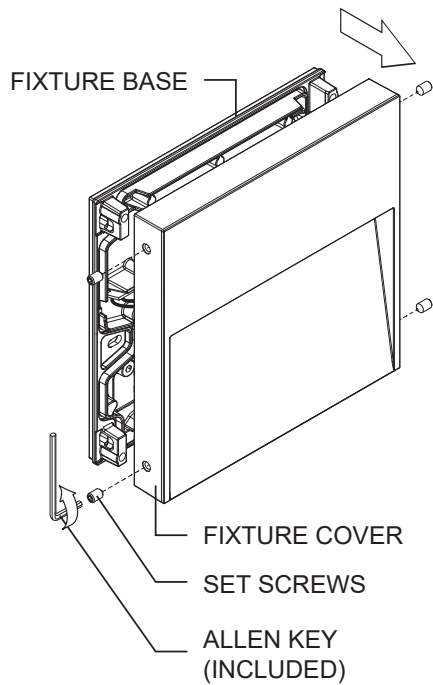
E

Make wire connections to the class II remote driver using watertight connectors (not included). Push the fixture in the back box until it clicks in place.



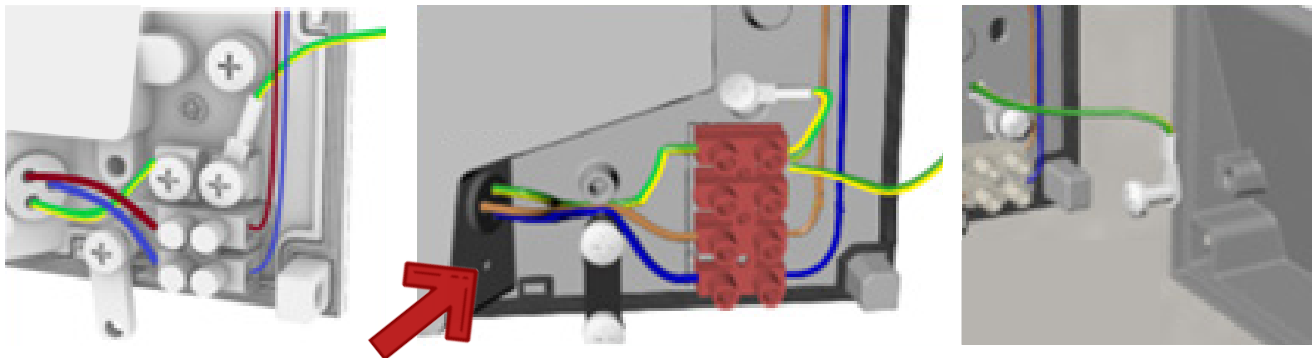
F

To remove fixture, just pull outwards.



G

To check the wire connections in the fixture, unscrew the 4 set screws with an allen key to remove the fixture cover from the fixture base.



H

Details of the wire connections inside the fixture.