

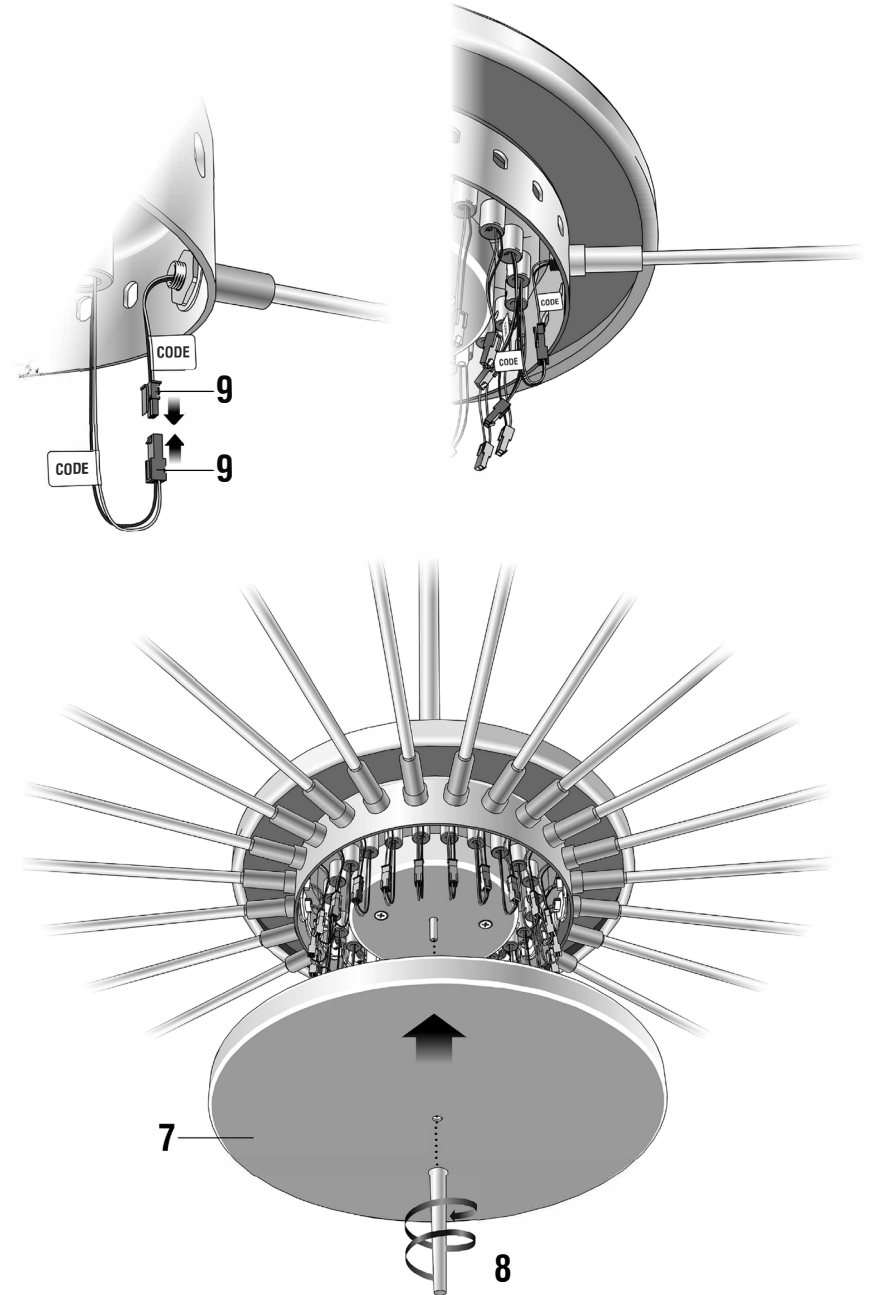
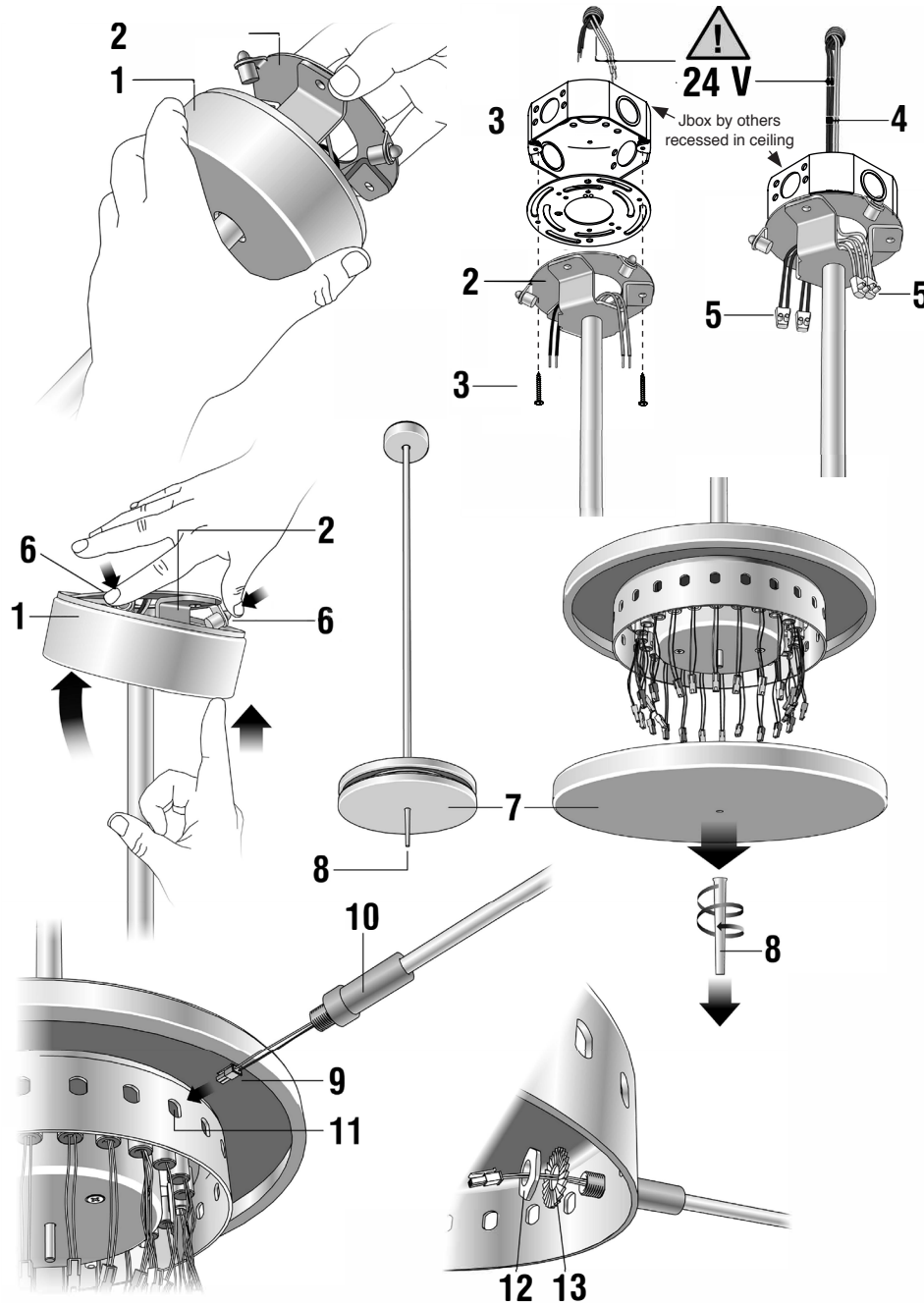
# POP™ P40

SUSPENSION

TYPE:

PROJECT NAME:

INSTALLATION SHEET

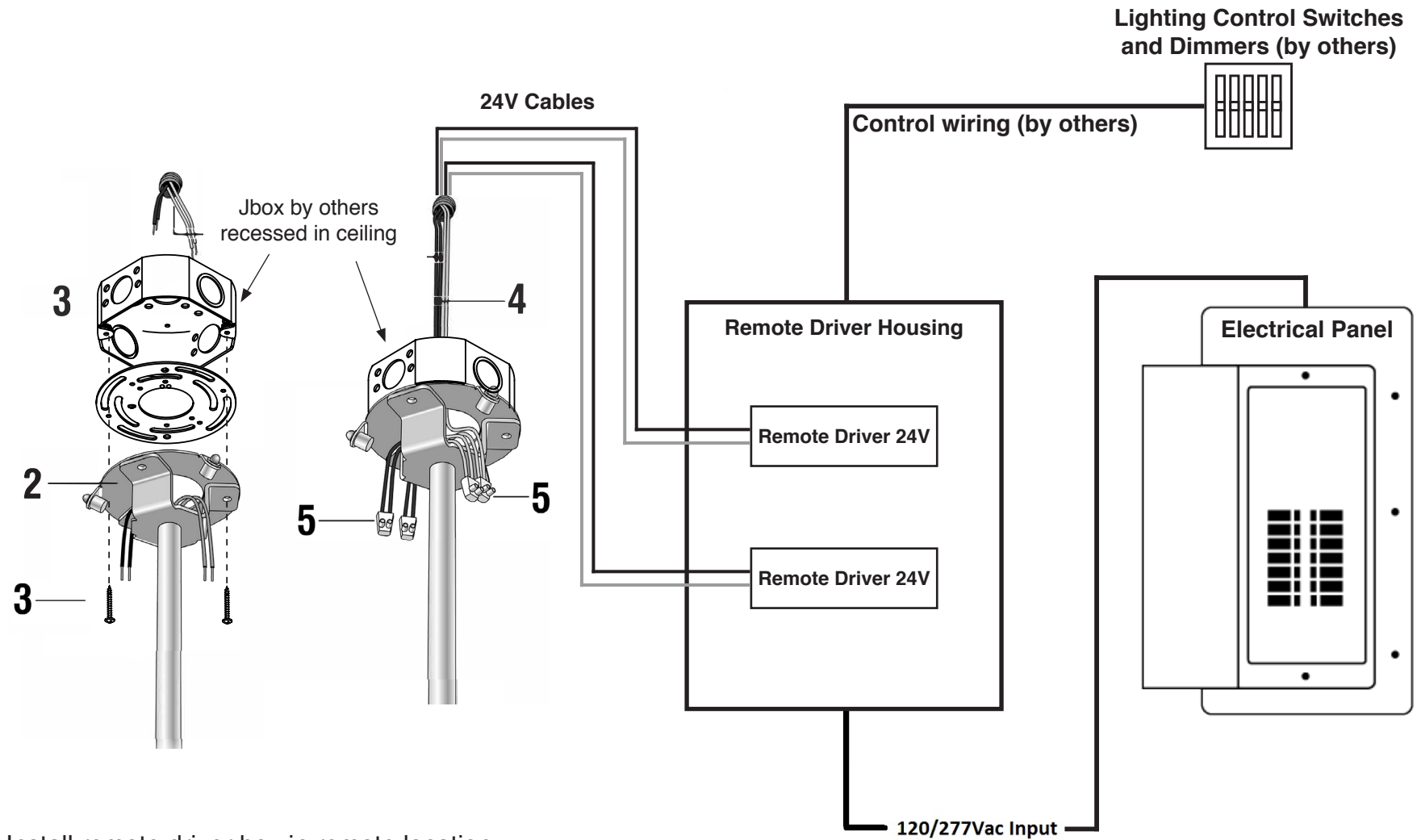


# POP™ P40

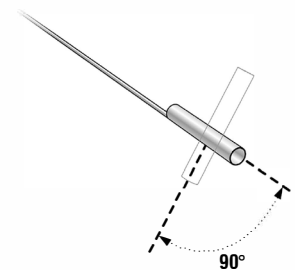
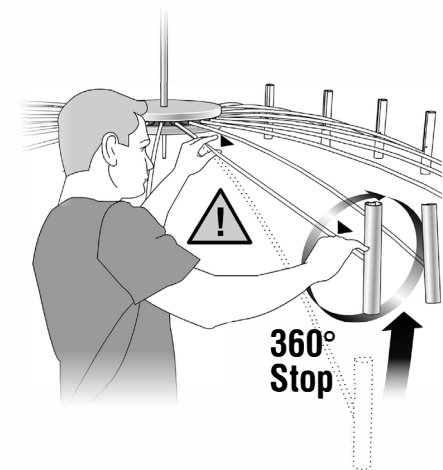
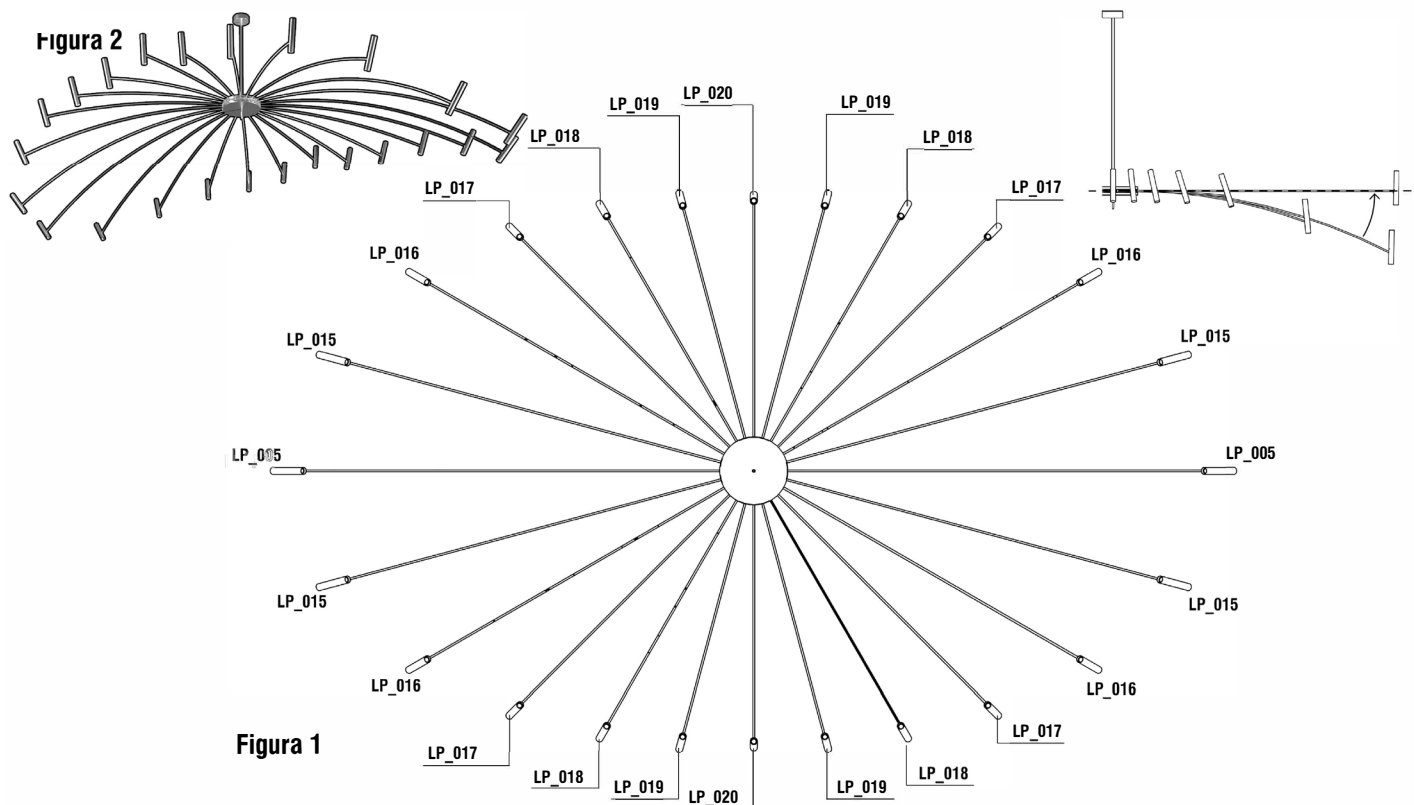
SUSPENSION - WIRE CONNECTIONS

TYPE:

PROJECT NAME:



Install remote driver box in remote location.  
Run 4 low voltage cables from driver box to  
fixture junction box.



P40A 20M.XC.4L\_R

Remove element **1** from the canopy **2**.

Fix canopy **2** to the Jbox using screws **3**.

Install remote driver box in remote location. Run 4 low voltage cables **4** from driver box to fixture junction box.

Close again canopy **2** with element **1** touching the pressure-blocks **6**.

Remove the inferior plate **7** unscrewing element **8**.

Put connectors **9** and the threaded joints **10** into the corresponding holes **11** as described in **Fig. 1**.

Fix the bracket inside using the nut **12** and the washer **13**.

Join connector **9** of the bracket **10** with the corresponding connector of the canopy (see **Fig.1**): both are marked with the same abbreviation in their label.

Finish the installation and the connection of all the brackets.

Finally replace the inferior plate **7** screwing element **8**.

The chandelier will finally have the shape of **Fig.2**.

Incline and rotate every single bracket as required.

Put the bracket horizontally before rotating it 360° to avoid damaging the fixing joint.