

IANUS

INSTALLATION INSTRUCTIONS

TYPE:

PROJECT NAME:



7071

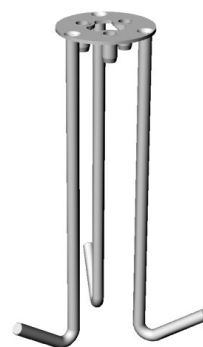


7072

7071
7072



3401
3402



5518



5506

BEFORE YOU START

Luminaire suitable for installation on poles cod. 3401 - 3402. The 5506 accessory is available for installation on common fiberglass poles Ø 60.

Make sure the pole has adequate drainage inside.

With poles cod. 3401 - 3402 the use of the accessory Plate anchoring set, cod. 5518, is recommended.

Refer to the instructions of the pole and the anchor plate for the correct orientation of the luminaire.

INSTALLATION SHEET

Luminart®

WWW.LUMINARTLIGHTING.COM

BOLLARD PREPARATION

INSTALLATION INSTRUCTIONS

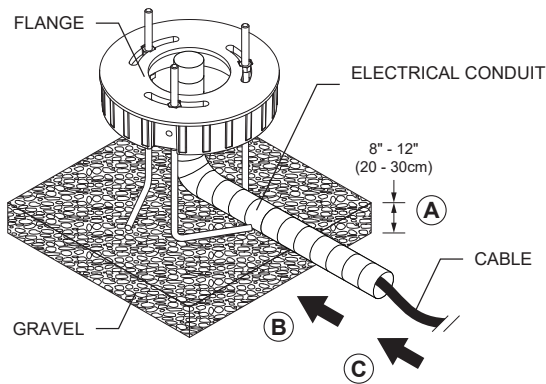
TYPE:

PROJECT NAME:

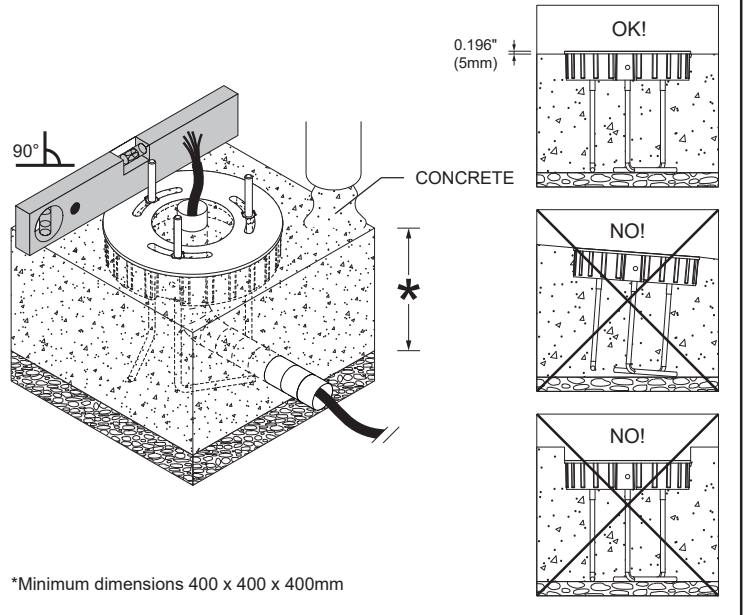
NEW CONCRETE INSTALLATION PREPARATION

- A- PREPARE THE DESIRED DRAINING USING 8"-12" (20-30cm) OF GRAVEL UNDER THE FLANGE.
- B- INSTALL AN APPROPRIATE ELECTRICAL CONDUIT THROUGH THE FLANGE.
- C- FEED CABLE THROUGH THE ELECTRICAL CONDUIT.
- D- POUR CONCRETE IN AND MAKE SURE THAT IT SITS 5mm UNDER THE TOP OF THE FLANGE.

[A + B + C]

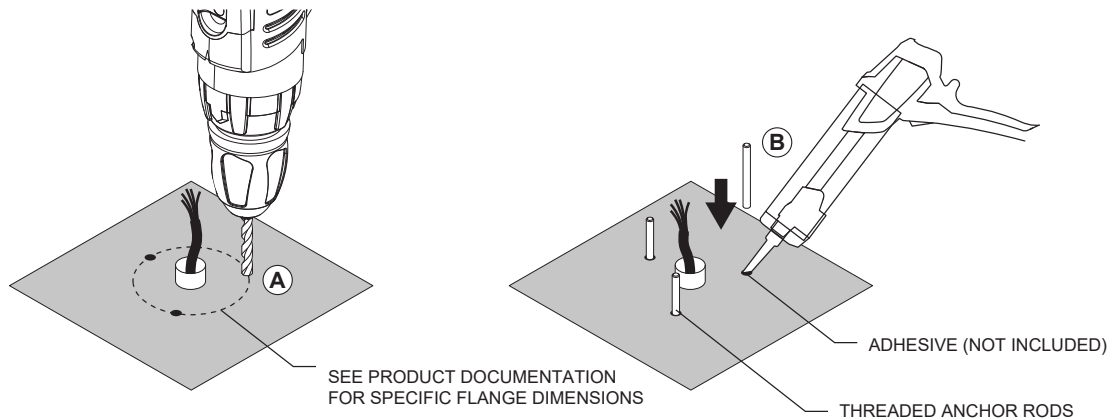


[D]



PRE-EXISTING SURFACE INSTALLATION PREPARATION

- A- DRILL (3) HOLES IN THE SURFACE
- B- INSERT THREADED ANCHOR RODS INTO THE HOLES. USE THE APPROPRIATE ADHESIVE (NOT INCLUDED) TO SECURE THE RODS IN PLACE.



IANUS

INSTALLATION INSTRUCTIONS

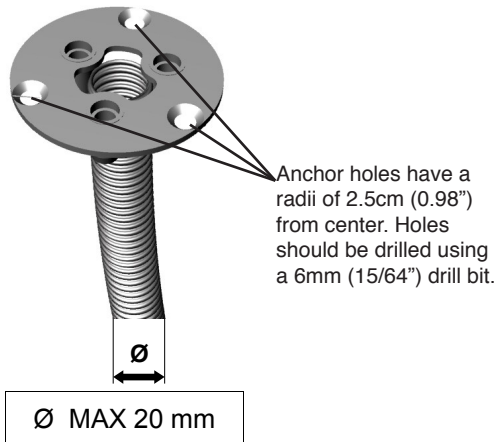
TYPE:

PROJECT NAME:

IANUS LE

3401
+ 5518
3402

A

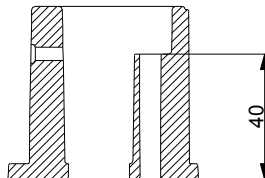


LE Light emission direction

Important: Before drilling and installing plate, ensure that the plate and bollard are oriented for correct light emission. Once the plate is installed, the bollard orientation cannot be changed.

3401 – 3402

B



S

ASSEMBLY WITH IANUS SERIES

By means of Plate with Anchoring set cod. 5518 [A]
Prepare a concrete casting to house the plate with anchoring set.
(See specific instructions of cod. 5518)
Recommended size: diameter 250 mm x 300 mm deep.

NOTE: It is important that the plate has been cemented with the proper orientation for the correct light emission of the IANUS luminaire.
Screw the base support to the plate, using the screws supplied.

Direct fixing to the ground [B]

Fix the base plate to the ground through the three pre-drilled holes, using Fischer-type metal anchors.
Follow the diagram [IANUS LE] to determine the correct orientation.
The gray triangle indicates which will be the light emission direction of the lighting body, when installed on the pole. Use suitable screws that protrude from the ground at least 40mm. (cross section drawing [S])

FINAL ASSEMBLY

Insert the pole on the base support and fix it with the screws supplied.
To facilitate assembly, lubricate the screws. [C]



C

Keep the instructions.

IANUS

INSTALLATION INSTRUCTIONS

TYPE:

PROJECT NAME:

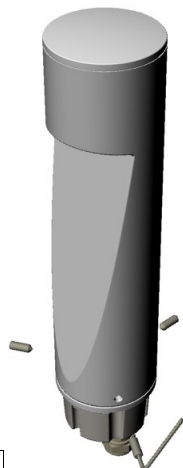
INSTALLATION

Use power cable with external Ø between 5 and 10 mm, including insulation, type H05 RN-F.

Unscrew the three fixing grub screws [1] and separate the plug screw terminal [2] to free the wiring box.

Open the wiring box by unscrewing the three lower screws. [3]

Carry out the wiring, respecting the position of the earth terminal. [4]



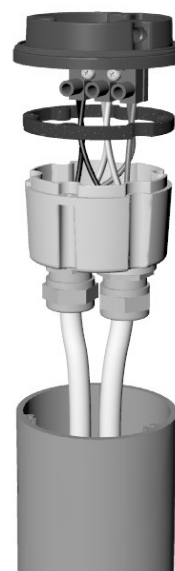
1



2



3



4

Before drilling the holes in the pole for installing the 5506 accessory perform a mounting test to determine the right orientation



5506

IANUS

INSTALLATION INSTRUCTIONS

TYPE:

PROJECT NAME:

INSTALLATION

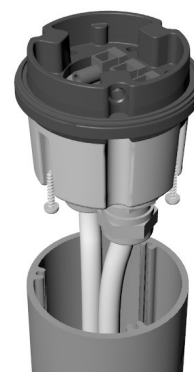
In case of through wiring, use the two cable glands supplied.
In case of single wiring, close the second unused hole with the plug provided [5].
Close the wiring box. Pay attention to the obligatory alignment of the plug clamp [6].
Place the wiring box inside the pole.
Before proceeding with the assembly of the luminaire, check that it emits light in the planned direction. If not, double check the position of the wiring box.
Fix the wiring box definitively [7].
Fit the lighting body, connecting the plug clamp [8] and fix it with the three previously removed grub screws [9].

Lubricate the the grub screws.

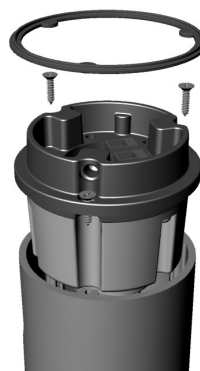
Attention: Tighten the grub screws just until they stop. Do not force further.



5



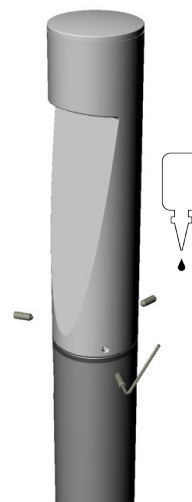
6



7



8



9