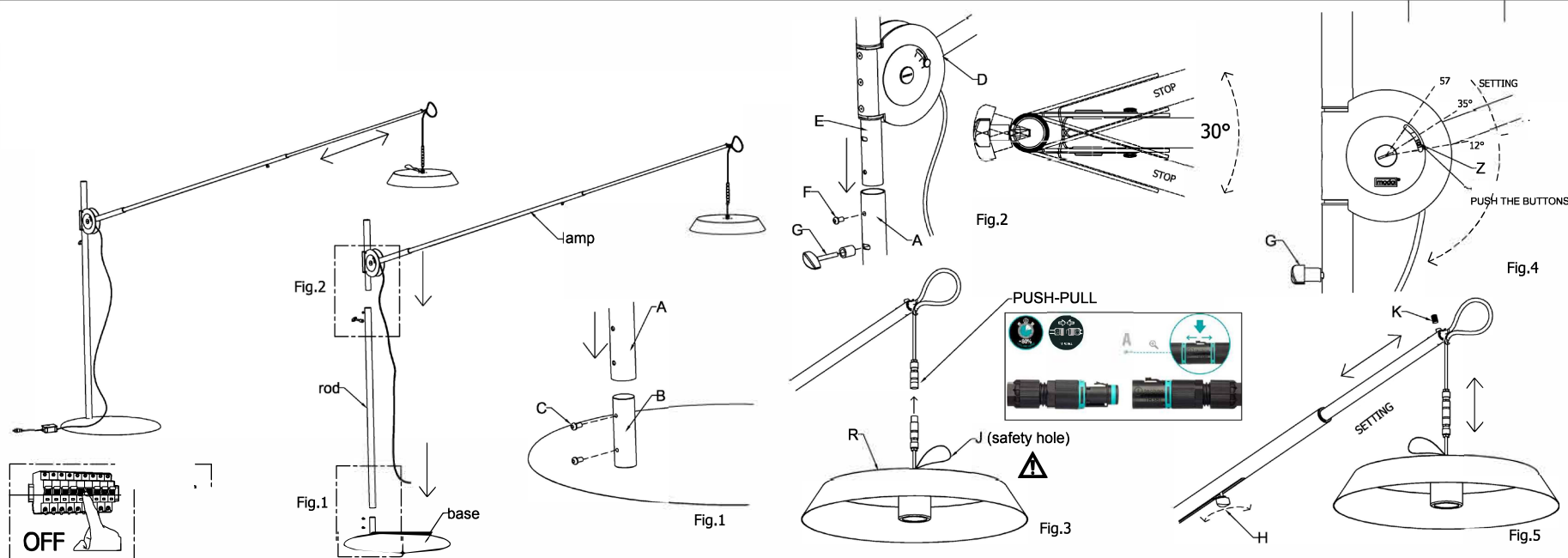


SESTANTE FLOOR

INSTALLATION INSTRUCTIONS

TYPE:

PROJECT NAME:



INSTRUCTION

- Disconnect the power supply.
- Fix the rod (A) to the detail (B) of the base, tighten the screws (C) (Fig. 1).
- Fix the lamp (D), insert the pin (E) into the rod (A), tighten the safety screw (F) and the Knob (G) (Fig. 2).
- Install the LED Diffuser (R), with the PUSH-PULL plug-in jack connector. (Fig. 3)

ADJUSTMENTS

- Adjust the angle of the lampshade rod acting on the Details (Z) compressing and releasing in the desired position (Fig. 4)
- Adjust the length of the shade rod using the Knob (H). (Fig. 5)
- Adjust the height of the lampshade using the cable clamp (K) by sliding the cable inside the profile (Fig. 5)

SETTING IN SAFETY (SEE INSERTED INSTRUCTION SHEET)

- Shorten the end rod of the lampshade and tighten the knob (H). (Fig. 5)
- Place the rod in the lowest position (fig. 4)
- Lock the rotation of the lamp, tighten the knob (G) (fig. 4)
- Removal of the led diffuser through rapid disconnection PUSH-PULL (Fig. 3)



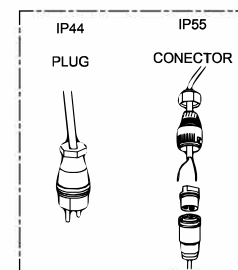
ATTENTION

The products of our production are suitable for the using in usual surroundings with standard temperature and humidity levels.
All the operations have to be done by a technician.

CLEANING

Switch off the power or pull the plug out.

For the periodical cleaning of the lamp use always gloves and a soft cloth (for glossy surfaces) or a feather duster.
Don't use aggressive solvents or alcohol.
Avoid absolutely to fold parts which are not expected for folding, in this case welded parts are going to be damaged.



1X Led Cob
18 W 2700/3000K

PROCEDURE TO SECURE THE LAMP DURING INCLEMENT WEATHER

WARNINGS IN CASE OF WEATHER

read carefully and keep the assembly instructions and the user manual. the relevant information must be absolutely respected.

the client is required to observe the weather forecasts and in the case of bad weather warnings, to take the necessary safety measures, if necessary until the lamp is dismantled.

STEP 1/2

Safety at wind risk must be carried out in a few minutes after the announcement of weather conditions.

STEP3.

In the event of exceptional weather events the lamp must be dismantled in a short time and made safe at any time.

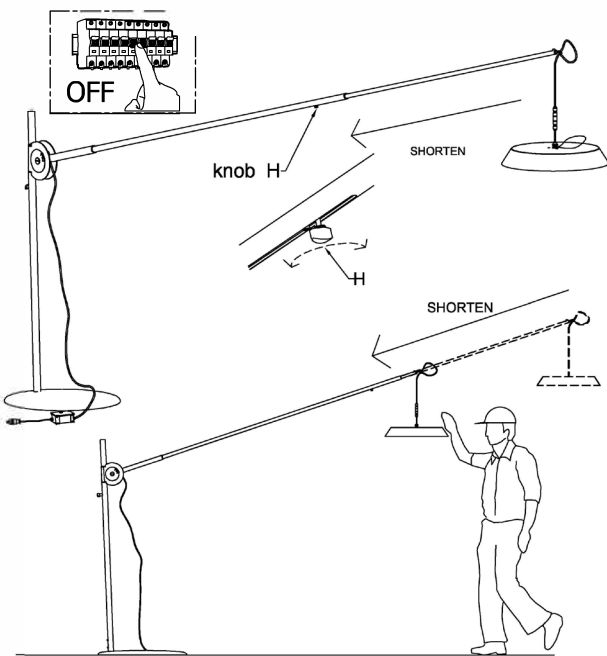
Remember that sudden gusts of wind can damage the lamp.

Always remember that the lamp is not a fixed structure.

The disassembly operations can also be performed independently, provided they are followed carefully according to the instructions attached to the product.

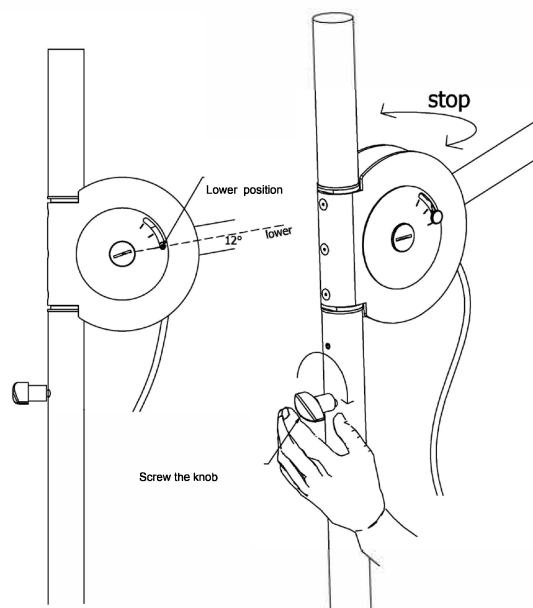
STEP 1

- Disconnect the power source.
- Shorten the shade rod at the end of its travel and tighten the knob H



STEP 2

- Place the rod in the lower position.
- Lock the rotation of the lamp by screwing the knob.



STEP 3

- Disconnect the connection and remove the LED diffuser, and place it in a safe place.

